

ZDHHC13 Antibody (N-term)
Affinity Purified Rabbit Polyclonal Antibody (Pab)
Catalog # AP16525b

Specification

ZDHHC13 Antibody (N-term) - Product Information

Application	WB,E
Primary Accession	Q8IUH4
Other Accession	Q80TN5 , Q8IUH5 , Q4R690 , NP_061901.2 , E9PTT0 , A0A0R4IOZ2 , A5WVX9
Reactivity Predicted	Human Zebrafish, Monkey, Mouse, Rat
Host	Rabbit
Clonality	Polyclonal
Isotype	Rabbit Ig
Antigen Region	55-83

ZDHHC13 Antibody (N-term) - Additional Information

Gene ID 54503

Other Names

Palmitoyltransferase ZDHHC13, Huntingtin-interacting protein 14-related protein, HIP14-related protein, Huntingtin-interacting protein HIP3RP, Putative MAPK-activating protein PM03, Putative NF-kappa-B-activating protein 209, Zinc finger DHHC domain-containing protein 13, DHHC-13, ZDHHC13, HIP14L, HIP3RP

Target/Specificity

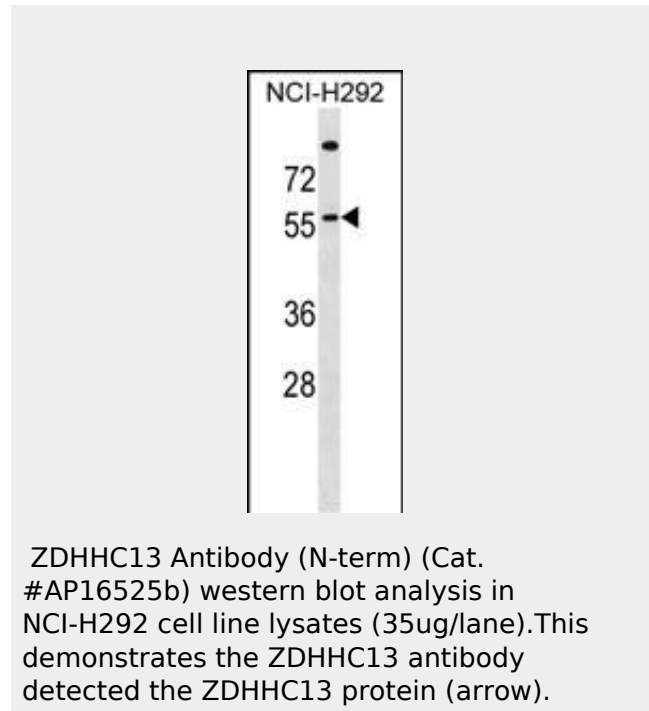
This ZDHHC13 antibody is generated from rabbits immunized with a KLH conjugated synthetic peptide between 55-83 amino acids from the N-terminal region of human ZDHHC13.

Dilution

WB~~1:1000

Format

Purified polyclonal antibody supplied in PBS



ZDHHC13 Antibody (N-term) - Background

ZDHHC13 is palmitoyltransferase for HD and GAD2 (By similarity).It mediates Mg(2+) transport (By similarity).

ZDHHC13 Antibody (N-term) - References

Goytain, A., et al. J. Biol. Chem. 283(48):33365-33374(2008)
Matsuda, A., et al. Oncogene 22(21):3307-3318(2003)
Singaraja, R.R., et al. Hum. Mol. Genet. 11(23):2815-2828(2002)

with 0.09% (W/V) sodium azide. This antibody is purified through a protein A column, followed by peptide affinity purification.

Storage

Maintain refrigerated at 2-8°C for up to 2 weeks. For long term storage store at -20°C in small aliquots to prevent freeze-thaw cycles.

Precautions

ZDHHC13 Antibody (N-term) is for research use only and not for use in diagnostic or therapeutic procedures.

ZDHHC13 Antibody (N-term) - Protein Information

Name ZDHHC13 ([HGNC:18413](#))

Function

Palmitoyltransferase that could catalyze the addition of palmitate onto various protein substrates (By similarity).

Palmitoyltransferase for HTT and GAD2.
May play a role in Mg(2+) transport.

Cellular Location

Golgi apparatus membrane
{ECO:0000250|UniProtKB:Q9CWU2};
Multi-pass membrane protein. Cytoplasmic vesicle membrane
{ECO:0000250|UniProtKB:Q9CWU2};
Multi-pass membrane protein. Note=Low extracellular Mg(2+) induces increase in Golgi and in post-Golgi vesicles.
{ECO:0000250|UniProtKB:Q9CWU2}

ZDHHC13 Antibody (N-term) - Protocols

Provided below are standard protocols that you may find useful for product applications.

- [Western Blot](#)
- [Blocking Peptides](#)
- [Dot Blot](#)
- [Immunohistochemistry](#)
- [Immunofluorescence](#)
- [Immunoprecipitation](#)
- [Flow Cytometry](#)
- [Cell Culture](#)