

ADI1 Antibody (Center)
Affinity Purified Rabbit Polyclonal Antibody (Pab)
Catalog # AP16495c

Specification

ADI1 Antibody (Center) - Product Information

Application	WB,E
Primary Accession	Q9BV57
Other Accession	NP_060739.2
Reactivity	Human
Host	Rabbit
Clonality	Polyclonal
Isotype	Rabbit Ig
Calculated MW	21498
Antigen Region	88-116

ADI1 Antibody (Center) - Additional Information

Gene ID 55256

Other Names

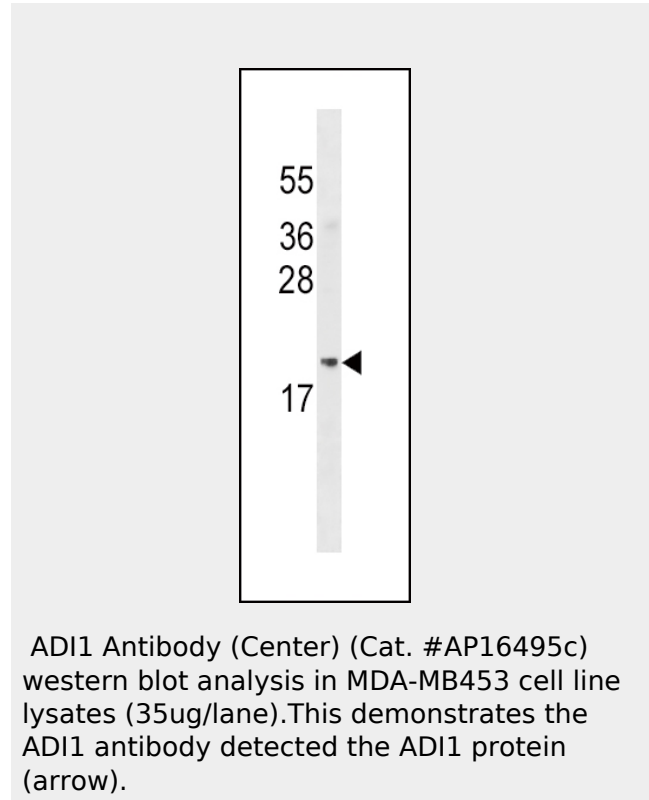
2-dihydroxy-3-keto-5-methylthiopentene dioxxygenase
{ECO:0000255|HAMAP-Rule:MF_03154},
1131154
{ECO:0000255|HAMAP-Rule:MF_03154},
Acireductone dioxxygenase
(Fe(2+)-requiring)
{ECO:0000255|HAMAP-Rule:MF_03154},
ARD
{ECO:0000255|HAMAP-Rule:MF_03154},
Fe-ARD
{ECO:0000255|HAMAP-Rule:MF_03154},
Membrane-type 1 matrix metalloproteinase
cytoplasmic tail-binding protein 1
{ECO:0000255|HAMAP-Rule:MF_03154},
MTCBP-1
{ECO:0000255|HAMAP-Rule:MF_03154},
Submergence-induced protein-like factor,
Sip-L, ADI1
{ECO:0000255|HAMAP-Rule:MF_03154}

Target/Specificity

This ADI1 antibody is generated from rabbits immunized with a KLH conjugated synthetic peptide between 88-116 amino acids from the Central region of human ADI1.

Dilution

WB~~1:1000



ADI1 Antibody (Center) - Background

This gene encodes an enzyme that belongs to the aci-reductone dioxxygenase family of metal-binding enzymes, which are involved in methionine salvage. This enzyme may regulate mRNA processing in the nucleus, and may carry out different functions depending on its localization. Related pseudogenes have been defined on chromosomes 8 and 20.

ADI1 Antibody (Center) - References

- Rose, J.E., et al. Mol. Med. 16 (7-8), 247-253 (2010) :
- Cheng, J.C., et al. J. Med. Virol. 81(9):1560-1568(2009)
- Oram, S.W., et al. Neoplasia 9(8):643-651(2007)

Format

Purified polyclonal antibody supplied in PBS with 0.09% (W/V) sodium azide. This antibody is purified through a protein A column, followed by peptide affinity purification.

Lamesch, P., et al. Genomics
89(3):307-315(2007)
Gotoh, I., et al. Genes Cells
12(1):105-117(2007)

Storage

Maintain refrigerated at 2-8°C for up to 2 weeks. For long term storage store at -20°C in small aliquots to prevent freeze-thaw cycles.

Precautions

ADI1 Antibody (Center) is for research use only and not for use in diagnostic or therapeutic procedures.

ADI1 Antibody (Center) - Protein Information**Name** ADI1

{ECO:0000255|HAMAP-Rule:MF_03154}

Function

Catalyzes the formation of formate and 2-keto-4- methylthiobutyrate (KMTB) from 1,2-dihydroxy-3-keto-5-methylthiopentene (DHK-MTPene). Also down-regulates cell migration mediated by MMP14. Necessary for hepatitis C virus replication in an otherwise non- permissive cell line.

Cellular Location

Cytoplasm. Nucleus. Cell membrane; Peripheral membrane protein; Cytoplasmic side. Note=Localizes to the plasma membrane when complexed to MMP14

Tissue Location

Detected in heart, colon, lung, stomach, brain, spleen, liver, skeletal muscle and kidney

ADI1 Antibody (Center) - Protocols

Provided below are standard protocols that you may find useful for product applications.

- [Western Blot](#)
- [Blocking Peptides](#)
- [Dot Blot](#)
- [Immunohistochemistry](#)
- [Immunofluorescence](#)
- [Immunoprecipitation](#)

- [Flow Cytometry](#)
- [Cell Culture](#)