

IP6K1 Antibody (N-term)
Affinity Purified Rabbit Polyclonal Antibody (Pab)
Catalog # AP16424a

Specification

IP6K1 Antibody (N-term) - Product Information

Application	WB,E
Primary Accession	O92551
Other Accession	NP_695005.1 , NP_001006115.1
Reactivity	Human
Host	Rabbit
Clonality	Polyclonal
Isotype	Rabbit Ig
Calculated MW	50236
Antigen Region	86-115

IP6K1 Antibody (N-term) - Additional Information

Gene ID 9807

Other Names

Inositol hexakisphosphate kinase 1, InsP6 kinase 1, Inositol hexaphosphate kinase 1, IP6K1, IHPK1, KIAA0263

Target/Specificity

This IP6K1 antibody is generated from rabbits immunized with a KLH conjugated synthetic peptide between 86-115 amino acids from the N-terminal region of human IP6K1.

Dilution

WB ~ ~ 1:1000

Format

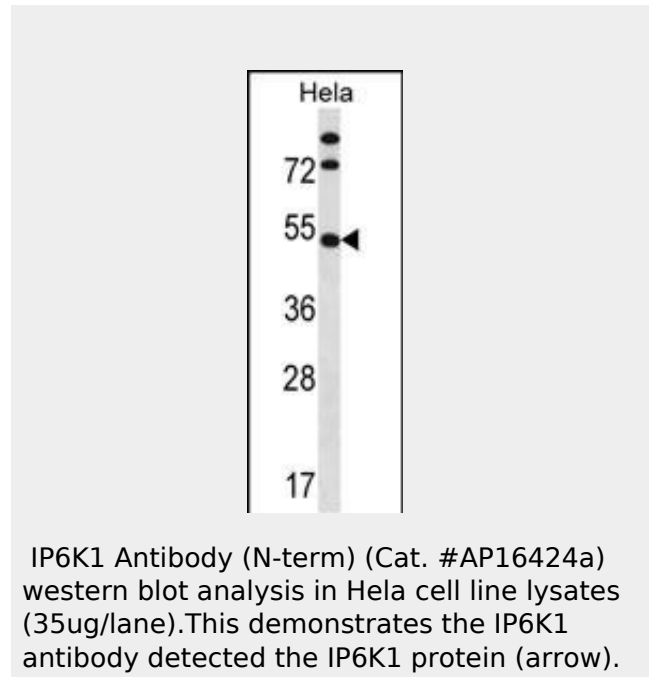
Purified polyclonal antibody supplied in PBS with 0.09% (W/V) sodium azide. This antibody is purified through a protein A column, followed by peptide affinity purification.

Storage

Maintain refrigerated at 2-8°C for up to 2 weeks. For long term storage store at -20°C in small aliquots to prevent freeze-thaw cycles.

Precautions

IP6K1 Antibody (N-term) is for research use



IP6K1 Antibody (N-term) - Background

IP6K1 is a protein that belongs to the inositol phosphokinase (IPK) family. This protein is likely responsible for the conversion of inositol hexakisphosphate (InsP6) to diphosphoinositol pentakisphosphate (InsP7/PP-InsP5). It may also convert 1,3,4,5,6-pentakisphosphate (InsP5) to PP-InsP4.

Alternative splicing occurs for this gene; however, the full-length nature of all transcript variants has not yet been described.

IP6K1 Antibody (N-term) - References

- Morgan, A.R., et al. Hum. Immunol. 71(6):602-609(2010)
- Padmanabhan, U., et al. J. Biol. Chem. 284(16):10571-10582(2009)
- Wang, A.G., et al. Biochem. Biophys. Res. Commun. 345(3):1022-1032(2006)
- Kamimura, J., et al. J. Hum. Genet. 49(7):360-365(2004)

only and not for use in diagnostic or therapeutic procedures.

Saiardi, A., et al. J. Biol. Chem. 276(42):39179-39185(2001)

IP6K1 Antibody (N-term) - Protein Information

Name IP6K1

Synonyms IHPK1, KIAA0263

Function

Converts inositol hexakisphosphate (InsP6) to diphosphoinositol pentakisphosphate (InsP7/PP-InsP5). Converts 1,3,4,5,6-pentakisphosphate (InsP5) to PP-InsP4.

Cellular Location

Cytoplasm. Nucleus

IP6K1 Antibody (N-term) - Protocols

Provided below are standard protocols that you may find useful for product applications.

- [Western Blot](#)
- [Blocking Peptides](#)
- [Dot Blot](#)
- [Immunohistochemistry](#)
- [Immunofluorescence](#)
- [Immunoprecipitation](#)
- [Flow Cytometry](#)
- [Cell Culture](#)