

PGA5 Antibody (C-term)
Affinity Purified Rabbit Polyclonal Antibody (Pab)
Catalog # AP16365b

Specification

PGA5 Antibody (C-term) - Product Information

Application	WB,E
Primary Accession	P0DJD9
Other Accession	P0DJD7 , P0DJD8 , P28712 , P00790 , NP_055039.1 , NP_001073276.1
Reactivity	Human
Predicted	Rabbit
Host	Rabbit
Clonality	Polyclonal
Isotype	Rabbit Ig
Calculated MW	41993
Antigen Region	354-383

PGA5 Antibody (C-term) - Additional Information

Gene ID 5222

Other Names

Pepsin A-5, Pepsinogen-5, PGA5

Target/Specificity

This PGA5 antibody is generated from rabbits immunized with a KLH conjugated synthetic peptide between 354-383 amino acids from the C-terminal region of human PGA5.

Dilution

WB~~1:1000

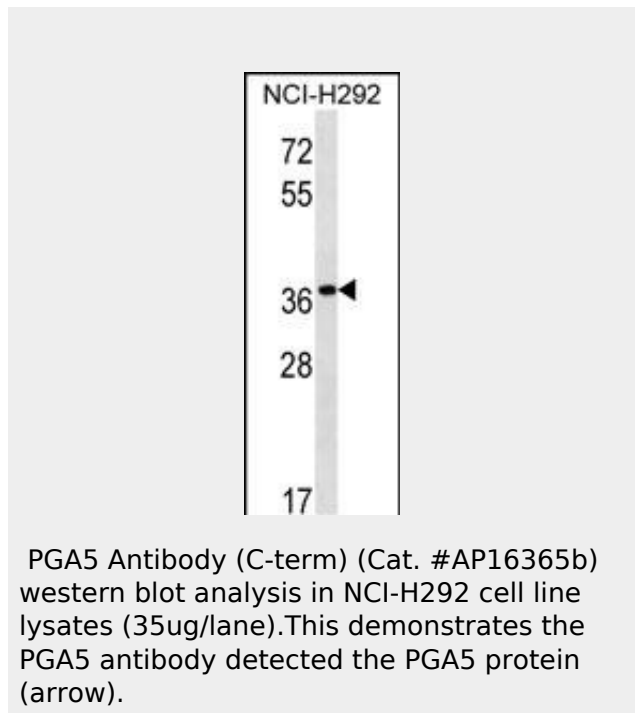
Format

Purified polyclonal antibody supplied in PBS with 0.09% (W/V) sodium azide. This antibody is purified through a protein A column, followed by peptide affinity purification.

Storage

Maintain refrigerated at 2-8°C for up to 2 weeks. For long term storage store at -20°C in small aliquots to prevent freeze-thaw cycles.

Precautions



PGA5 Antibody (C-term) - Background

PGA3 shows particularly broad specificity; although bonds involving phenylalanine and leucine are preferred, many others are also cleaved to some extent.

PGA5 Antibody (C-term) - References

Plebani, M., et al. *Helicobacter* 2(4):172-175(1997)
 Fujinaga, M., et al. *Protein Sci.* 4(5):960-972(1995)
 Zwiers, A., et al. *Clin. Nephrol.* 41(3):153-158(1994)
 Ichinose, M., et al. *Jpn. J. Cancer Res.* 82(6):686-692(1991)
 Athauda, S.B., et al. *J. Biochem.* 106(5):920-927(1989)

PGA5 Antibody (C-term) is for research use only and not for use in diagnostic or therapeutic procedures.

PGA5 Antibody (C-term) - Protein Information

Name PGA5

Function

Shows particularly broad specificity; although bonds involving phenylalanine and leucine are preferred, many others are also cleaved to some extent.

Cellular Location

Secreted.

PGA5 Antibody (C-term) - Protocols

Provided below are standard protocols that you may find useful for product applications.

- [Western Blot](#)
- [Blocking Peptides](#)
- [Dot Blot](#)
- [Immunohistochemistry](#)
- [Immunofluorescence](#)
- [Immunoprecipitation](#)
- [Flow Cytometry](#)
- [Cell Culture](#)