

TRAPPC2 Antibody (N-term)
Affinity Purified Rabbit Polyclonal Antibody (Pab)
Catalog # AP16270a

Specification

TRAPPC2 Antibody (N-term) - Product Information

Application	WB,E
Primary Accession	P0DI81
Other Accession	F1SRI0 , Q9COP2 , Q08CN0 , Q5ZKP4 , Q3T0F2 , P0DI82
Reactivity Predicted	Human Bovine, Chicken, Zebrafish, Mouse, Pig
Host	Rabbit
Clonality	Polyclonal
Isotype	Rabbit Ig
Calculated MW	16445
Antigen Region	11-39

TRAPPC2 Antibody (N-term) - Additional Information

Gene ID 6399

Other Names

Trafficking protein particle complex subunit 2, Sedlin, TRAPPC2, SEDL

Target/Specificity

This TRAPPC2 antibody is generated from rabbits immunized with a KLH conjugated synthetic peptide between 11-39 amino acids from the N-terminal region of human TRAPPC2.

Dilution

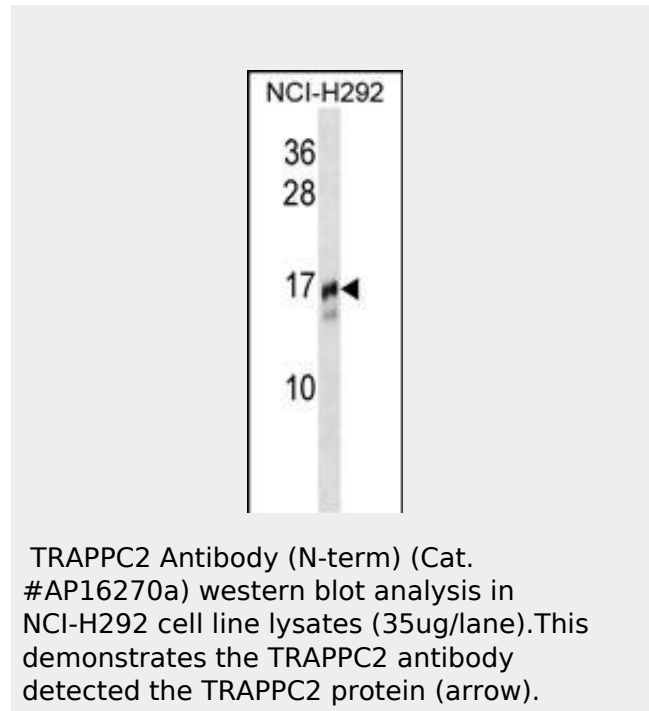
WB~~1:1000

Format

Purified polyclonal antibody supplied in PBS with 0.09% (W/V) sodium azide. This antibody is purified through a protein A column, followed by peptide affinity purification.

Storage

Maintain refrigerated at 2-8°C for up to 2 weeks. For long term storage store at -20°C



TRAPPC2 Antibody (N-term) - Background

TRAPPC2 is thought to be part of a large multi-subunit complex involved in the targeting and fusion of endoplasmic reticulum-to-Golgi transport vesicles with their acceptor compartment. In addition, the encoded protein can bind c-myc promoter-binding protein 1 and block its transcriptional repression capability. Mutations in this gene are a cause of spondyloepiphyseal dysplasia tarda (SED). A processed pseudogene of this gene is located on chromosome 19, and other pseudogenes are found on chromosomes 8 and Y.

TRAPPC2 Antibody (N-term) - References

Liu, X., et al. J. Cell. Biochem. 109(6):1129-1133(2010)
Jeyabalan, J., et al. PLoS ONE 5 (5), E10646 (2010) :

in small aliquots to prevent freeze-thaw cycles.

Precautions

TRAPPC2 Antibody (N-term) is for research use only and not for use in diagnostic or therapeutic procedures.

Xia, X.Y., et al. Clin. Chim. Acta 410 (1-2), 39-42 (2009) :

Guo, H., et al. J. Genet. 88(1):87-91(2009)

Xiong, F., et al. Eur. J. Hum. Genet. 17(4):510-516(2009)

TRAPPC2 Antibody (N-term) - Protein Information

Name TRAPPC2

Synonyms SEDL

Function

Prevents transcriptional repression and induction of cell death by ENO1 (By similarity). May play a role in vesicular transport from endoplasmic reticulum to Golgi.

Cellular Location

Cytoplasm, perinuclear region. Endoplasmic reticulum-Golgi intermediate compartment. Nucleus. Cytoplasm. Note=Localized in perinuclear granular structures.

Tissue Location

Expressed in brain, heart, kidney, liver, lung, pancreas, placenta, skeletal muscle, fetal cartilage, fibroblasts, placenta and lymphocytes.

TRAPPC2 Antibody (N-term) - Protocols

Provided below are standard protocols that you may find useful for product applications.

- [Western Blot](#)
- [Blocking Peptides](#)
- [Dot Blot](#)
- [Immunohistochemistry](#)
- [Immunofluorescence](#)
- [Immunoprecipitation](#)
- [Flow Cytometry](#)
- [Cell Culture](#)