

**SF3B2 Antibody (Center)**  
**Affinity Purified Rabbit Polyclonal Antibody (Pab)**  
**Catalog # AP16199c**

**Specification**

**SF3B2 Antibody (Center) - Product Information**

Application	<b>WB,E</b>
Primary Accession	<a href="#">O13435</a>
Other Accession	<a href="#">NP_006833.2</a>
Reactivity	<b>Human, Mouse, Rat</b>
Host	<b>Rabbit</b>
Clonality	<b>Polyclonal</b>
Isotype	<b>Rabbit Ig</b>
Antigen Region	<b>539-568</b>

**SF3B2 Antibody (Center) - Additional Information**

**Gene ID** 10992

**Other Names**

Splicing factor 3B subunit 2,  
Pre-mRNA-splicing factor SF3b 145 kDa subunit, SF3b145, SF3b150,  
Spliceosome-associated protein 145, SAP 145, SF3B2, SAP145

**Target/Specificity**

This SF3B2 antibody is generated from rabbits immunized with a KLH conjugated synthetic peptide between 539-568 amino acids from the Central region of human SF3B2.

**Dilution**

WB ~ ~ 1:2000

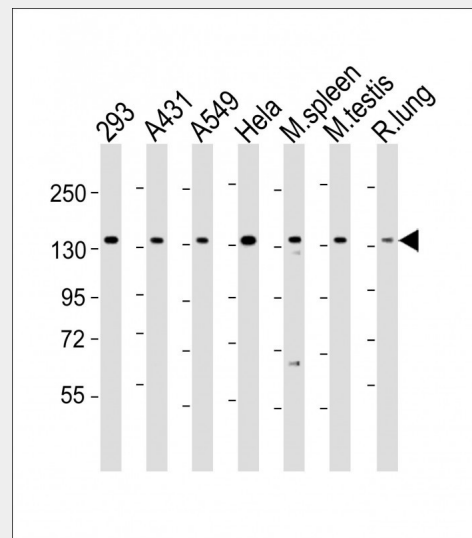
**Format**

Purified polyclonal antibody supplied in PBS with 0.09% (W/V) sodium azide. This antibody is purified through a protein A column, followed by peptide affinity purification.

**Storage**

Maintain refrigerated at 2-8°C for up to 2 weeks. For long term storage store at -20°C in small aliquots to prevent freeze-thaw cycles.

**Precautions**



All lanes : Anti-SF3B2 Antibody (Center) at 1:2000 dilution Lane 1: 293 whole cell lysate Lane 2: A431 whole cell lysate Lane 3: A549 whole cell lysate Lane 4: HeLa whole cell lysate Lane 5: mouse spleen lysate Lane 6: mouse testis lysate Lane 7: rat lung lysate Lysates/proteins at 20 µg per lane. Secondary Goat Anti-Rabbit IgG, (H+L), Peroxidase conjugated at 1/10000 dilution. Predicted band size : 100 kDa Blocking/Dilution buffer: 5% NFDM/TBST.

**SF3B2 Antibody (Center) - Background**

This gene encodes subunit 2 of the splicing factor 3b protein complex. Splicing factor 3b, together with splicing factor 3a and a 12S RNA unit, forms the U2 small nuclear ribonucleoproteins complex (U2 snRNP). The splicing factor 3b/3a complex binds pre-mRNA upstream of the intron's branch site in a sequence-independent manner and may anchor the U2 snRNP to the pre-mRNA. Splicing factor 3b is also a component of the minor

SF3B2 Antibody (Center) is for research use only and not for use in diagnostic or therapeutic procedures.

#### SF3B2 Antibody (Center) - Protein Information

**Name** SF3B2

**Synonyms** SAP145

#### Function

Involved in pre-mRNA splicing as a component of the splicing factor SF3B complex (PubMed: [27720643](http://www.uniprot.org/citations/27720643) target="\_blank">27720643</a>). SF3B complex is required for 'A' complex assembly formed by the stable binding of U2 snRNP to the branchpoint sequence (BPS) in pre-mRNA. Sequence independent binding of SF3A/SF3B complex upstream of the branch site is essential, it may anchor U2 snRNP to the pre-mRNA (PubMed: [12234937](http://www.uniprot.org/citations/12234937) target="\_blank">12234937</a>). May also be involved in the assembly of the 'E' complex (PubMed: [10882114](http://www.uniprot.org/citations/10882114) target="\_blank">10882114</a>). Belongs also to the minor U12-dependent spliceosome, which is involved in the splicing of rare class of nuclear pre-mRNA intron (PubMed: [15146077](http://www.uniprot.org/citations/15146077) target="\_blank">15146077</a>).

#### Cellular Location

Nucleus. Nucleus speckle

U12-type spliceosome. Subunit 2 associates with pre-mRNA upstream of the branch site at the anchoring site. Subunit 2 also interacts directly with subunit 4 of the splicing factor 3b complex. Subunit 2 is a highly hydrophilic protein with a proline-rich N-terminus and a glutamate-rich stretch in the C-terminus. [provided by RefSeq].

#### SF3B2 Antibody (Center) - References

Matsuoka, S., et al. Science 316(5828):1160-1166(2007)  
Ewing, R.M., et al. Mol. Syst. Biol. 3, 89 (2007) :  
Olsen, J.V., et al. Cell 127(3):635-648(2006)  
Olsen, J.V., et al. Cell 127(3):635-648(2006)  
Terada, Y., et al. Mol. Cell. Biol. 26(21):8149-8158(2006)

#### SF3B2 Antibody (Center) - Protocols

Provided below are standard protocols that you may find useful for product applications.

- [Western Blot](#)
- [Blocking Peptides](#)
- [Dot Blot](#)
- [Immunohistochemistry](#)
- [Immunofluorescence](#)
- [Immunoprecipitation](#)
- [Flow Cytometry](#)
- [Cell Culture](#)

#### SF3B2 Antibody (Center) - Citations

- [Cellular Cleavage and Polyadenylation Specificity Factor 6 \(CPSF6\) Mediates Nuclear Import of Human Bocavirus 1 NP1 Protein and Modulates Viral Capsid Protein Expression](#)