

PIGT Antibody (C-term)
Affinity Purified Rabbit Polyclonal Antibody (Pab)
Catalog # AP16188b

Specification

PIGT Antibody (C-term) - Product Information

Application	WB,E
Primary Accession	Q969N2
Other Accession	Q8BXQ2 , NP_057021.2 , NP_001171658.1 , NP_001171657.1
Reactivity	Human
Predicted	Mouse
Host	Rabbit
Clonality	Polyclonal
Isotype	Rabbit Ig
Calculated MW	65700
Antigen Region	392-421

PIGT Antibody (C-term) - Additional Information

Gene ID 51604

Other Names

GPI transamidase component PIG-T,
Phosphatidylinositol-glycan biosynthesis
class T protein, PIGT

Target/Specificity

This PIGT antibody is generated from rabbits immunized with a KLH conjugated synthetic peptide between 392-421 amino acids from the C-terminal region of human PIGT.

Dilution

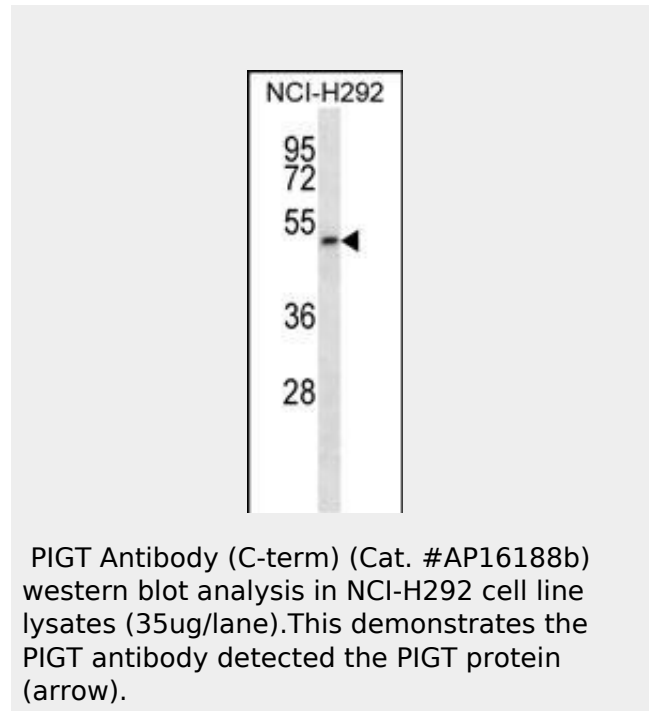
WB~~1:1000

Format

Purified polyclonal antibody supplied in PBS with 0.09% (W/V) sodium azide. This antibody is purified through a protein A column, followed by peptide affinity purification.

Storage

Maintain refrigerated at 2-8°C for up to 2 weeks. For long term storage store at -20°C in small aliquots to prevent freeze-thaw cycles.



PIGT Antibody (C-term) - Background

This gene encodes a protein that is involved in glycosylphosphatidylinositol (GPI)-anchor biosynthesis. The GPI-anchor is a glycolipid found on many blood cells and serves to anchor proteins to the cell surface. This protein is an essential component of the multisubunit enzyme, GPI transamidase. GPI transamidase mediates GPI anchoring in the endoplasmic reticulum, by catalyzing the transfer of fully assembled GPI units to proteins. Several transcript variants encoding different isoforms have been found for this gene.

PIGT Antibody (C-term) - References

Li, H.L., et al. FEBS Lett. 580(7):1723-1728(2006)
Vainauskas, S., et al. J. Biol. Chem. 280(16):16402-16409(2005)

Precautions

PIGT Antibody (C-term) is for research use only and not for use in diagnostic or therapeutic procedures.

Ohishi, K., et al. J. Biol. Chem. 278(16):13959-13967(2003)
Eisenhaber, B., et al. Bioessays 25(4):367-385(2003)
Vainauskas, S., et al. J. Biol. Chem. 277(34):30535-30542(2002)

PIGT Antibody (C-term) - Protein Information

Name PIGT

Function

Component of the GPI transamidase complex. Essential for transfer of GPI to proteins, particularly for formation of carbonyl intermediates.

Cellular Location

Endoplasmic reticulum membrane;
Single-pass type I membrane protein

PIGT Antibody (C-term) - Protocols

Provided below are standard protocols that you may find useful for product applications.

- [Western Blot](#)
- [Blocking Peptides](#)
- [Dot Blot](#)
- [Immunohistochemistry](#)
- [Immunofluorescence](#)
- [Immunoprecipitation](#)
- [Flow Cytometry](#)
- [Cell Culture](#)