

**Mouse Camkk2 Antibody (N-term)**  
**Affinity Purified Rabbit Polyclonal Antibody (Pab)**  
**Catalog # AP14951a**

**Specification**

**Mouse Camkk2 Antibody (N-term) - Product Information**

Application	WB,E
Primary Accession	<a href="#">Q8C078</a>
Other Accession	<a href="#">NP_663333.1</a>
Reactivity	Human, Mouse, Rat
Host	Rabbit
Clonality	Polyclonal
Isotype	Rabbit Ig
Antigen Region	43-71

**Mouse Camkk2 Antibody (N-term) - Additional Information**

**Gene ID** 207565

**Other Names**

Calcium/calmodulin-dependent protein kinase kinase 2, CaM-KK 2, CaM-kinase kinase 2, CaMKK 2, Calcium/calmodulin-dependent protein kinase kinase beta, CaM-KK beta, CaM-kinase kinase beta, CaMKK beta, Camkk2, Kiaa0787

**Target/Specificity**

This Mouse Camkk2 antibody is generated from rabbits immunized with a KLH conjugated synthetic peptide between 43-71 amino acids from the N-terminal region of mouse Camkk2.

**Dilution**

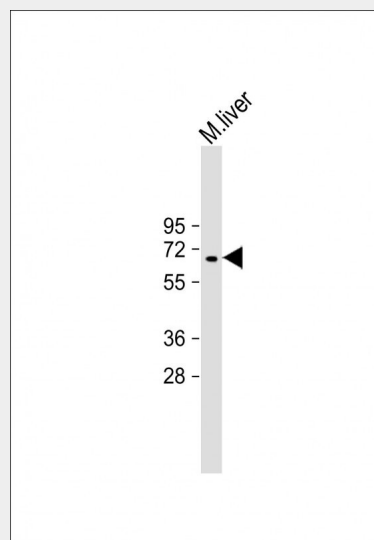
WB~~1:2000

**Format**

Purified polyclonal antibody supplied in PBS with 0.09% (W/V) sodium azide. This antibody is purified through a protein A column, followed by peptide affinity purification.

**Storage**

Maintain refrigerated at 2-8°C for up to 2 weeks. For long term storage store at -20°C



Anti-Mouse Camkk2 Antibody (N-term) at 1:2000 dilution + mouse liver lysate Lysates/proteins at 20 µg per lane. Secondary Goat Anti-Rabbit IgG, (H+L), Peroxidase conjugated at 1/10000 dilution. Predicted band size : 65 kDa Blocking/Dilution buffer: 5% NFDM/TBST.

**Mouse Camkk2 Antibody (N-term) - Background**

Calcium/calmodulin-dependent protein kinase belonging to a proposed calcium-triggered signaling cascade involved in a number of cellular processes. Phosphorylates CAMK1, CAMK4 and CAMK1D (By similarity). Seems to be involved in hippocampal activation of CREB1.

**Mouse Camkk2 Antibody (N-term) - References**

Jin, X.L., et al. Biol. Reprod. 82(2):459-468(2010)  
Kokubo, M., et al. J. Neurosci. 29(28):8901-8913(2009)  
Anderson, K.A., et al. Cell Metab. 7(5):377-388(2008)

in small aliquots to prevent freeze-thaw cycles.

#### **Precautions**

Mouse Camkk2 Antibody (N-term) is for research use only and not for use in diagnostic or therapeutic procedures.

Park, C.S., et al. Neuroscience  
151(1):43-55(2008)  
Hoyer-Hansen, M., et al. Mol. Cell  
25(2):193-205(2007)

#### **Mouse Camkk2 Antibody (N-term) - Protein Information**

**Name** Camkk2

**Synonyms** Kiaa0787

#### **Function**

Calcium/calmodulin-dependent protein kinase belonging to a proposed calcium-triggered signaling cascade involved in a number of cellular processes. Phosphorylates CAMK1, CAMK4 and CAMK1D (By similarity). Efficiently phosphorylates 5'-AMP-activated protein kinase (AMPK) trimer, including that consisting of PRKAA1, PRKAB1 and PRKAG1. This phosphorylation is stimulated in response to Ca(2+) signals (By similarity). May play a role in neurite growth. Isoform 2 may promote neurite elongation, while isoform 1 may promoter neurite branching (By similarity). May be involved in hippocampal activation of CREB1.

#### **Cellular Location**

Nucleus

{ECO:0000250|UniProtKB:Q96RR4}.

Cytoplasm

{ECO:0000250|UniProtKB:Q96RR4}. Cell

projection, neuron projection

{ECO:0000250|UniProtKB:Q96RR4}.

Note=Predominantly nuclear in unstimulated cells, relocalizes into cytoplasm and neurites after forskolin induction.

{ECO:0000250|UniProtKB:Q96RR4}

#### **Tissue Location**

Expressed in all tissues tested. A differential expression pattern compared to CAMKK1 is observed in the brain

#### **Mouse Camkk2 Antibody (N-term) - Protocols**

Provided below are standard protocols that you may find useful for product applications.

- [Western Blot](#)
- [Blocking Peptides](#)
- [Dot Blot](#)
- [Immunohistochemistry](#)
- [Immunofluorescence](#)
- [Immunoprecipitation](#)
- [Flow Cytometry](#)
- [Cell Culture](#)