

**ALDH8A1 Antibody (C-term)**  
**Affinity Purified Rabbit Polyclonal Antibody (Pab)**  
**Catalog # AP1479B**

**Specification**

**ALDH8A1 Antibody (C-term) - Product Information**

Application	WB,E
Primary Accession	<a href="#">Q9H2A2</a>
Reactivity	Mouse
Host	Rabbit
Clonality	Polyclonal
Isotype	Rabbit Ig
Antigen Region	386-416

**ALDH8A1 Antibody (C-term) - Additional Information**

Gene ID 64577

**Other Names**

Aldehyde dehydrogenase family 8 member A1, 121-, Aldehyde dehydrogenase 12, ALDH8A1, ALDH12

**Target/Specificity**

This ALDH8A1 antibody is generated from rabbits immunized with a KLH conjugated synthetic peptide between 386-416 amino acids from the C-terminal region of human ALDH8A1.

**Dilution**

WB~~1:2000

**Format**

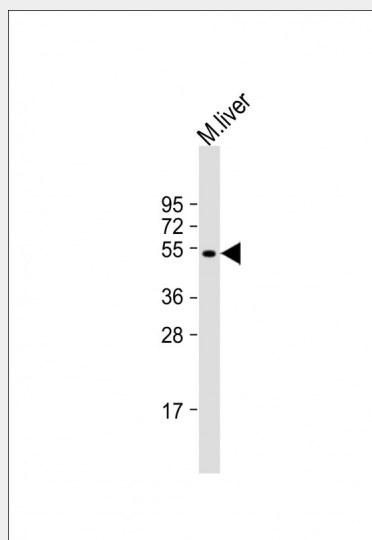
Purified polyclonal antibody supplied in PBS with 0.09% (W/V) sodium azide. This antibody is purified through a protein A column, followed by peptide affinity purification.

**Storage**

Maintain refrigerated at 2-8°C for up to 2 weeks. For long term storage store at -20°C in small aliquots to prevent freeze-thaw cycles.

**Precautions**

ALDH8A1 Antibody (C-term) is for research use only and not for use in diagnostic or



Anti-ALDH8A1 Antibody (C-term) at 1:2000 dilution + mouse liver lysate Lysates/proteins at 20 µg per lane. Secondary Goat Anti-Rabbit IgG, (H+L), Peroxidase conjugated at 1/10000 dilution. Predicted band size : 53 kDa Blocking/Dilution buffer: 5% NFD/MTBST.

**ALDH8A1 Antibody (C-term) - Background**

ALDH8A1 belongs to the aldehyde dehydrogenases family of proteins. It plays a role in a pathway of 9-cis-retinoic acid biosynthesis in vivo. This enzyme converts 9-cis-retinal into the retinoid X receptor ligand 9-cis-retinoic acid, and has approximately 40-fold higher activity with 9-cis-retinal than with all-trans-retinal. Therefore, it is the first known aldehyde dehydrogenase to show a preference for 9-cis-retinal relative to all-trans-retinal.

**ALDH8A1 Antibody (C-term) - References**

Lin,M.,J. Biol. Chem. 275 (51), 40106-40112 (2000)

therapeutic procedures.

#### **ALDH8A1 Antibody (C-term) - Protein Information**

**Name** ALDH8A1 ([HGNC:15471](#))

**Synonyms** ALDH12

#### **Function**

Catalyzes the NAD-dependent oxidation of 2-aminomuconic semialdehyde of the kynurenine metabolic pathway in L-tryptophan degradation.

#### **Cellular Location**

Cytoplasm.

#### **Tissue Location**

Highly expressed in adult kidney and liver.  
Detected at lower levels in fetal liver and kidney

#### **ALDH8A1 Antibody (C-term) - Protocols**

Provided below are standard protocols that you may find useful for product applications.

- [Western Blot](#)
- [Blocking Peptides](#)
- [Dot Blot](#)
- [Immunohistochemistry](#)
- [Immunofluorescence](#)
- [Immunoprecipitation](#)
- [Flow Cytometry](#)
- [Cell Culture](#)