

**NUDCD1 Antibody (Center)**  
**Affinity Purified Rabbit Polyclonal Antibody (Pab)**  
**Catalog # AP14736c**

**Specification**

**NUDCD1 Antibody (Center) - Product Information**

Application	WB,E
Primary Accession	<a href="#">Q96RS6</a>
Other Accession	<a href="#">NP_116258.2</a> , <a href="#">NP_001121683.1</a>
Reactivity	Human
Host	Rabbit
Clonality	Polyclonal
Isotype	Rabbit Ig
Calculated MW	66756
Antigen Region	194-223

**NUDCD1 Antibody (Center) - Additional Information**

**Gene ID** 84955

**Other Names**

NudC domain-containing protein 1, Chronic myelogenous leukemia tumor antigen 66, Tumor antigen CML66, NUDCD1 ([http://www.genenames.org/cgi-bin/gene\\_symbol\\_report?hgnc\\_id=24306](http://www.genenames.org/cgi-bin/gene_symbol_report?hgnc_id=24306) target="\_blank">HGNC:24306</a>)

**Target/Specificity**

This NUDCD1 antibody is generated from rabbits immunized with a KLH conjugated synthetic peptide between 194-223 amino acids from the Central region of human NUDCD1.

**Dilution**

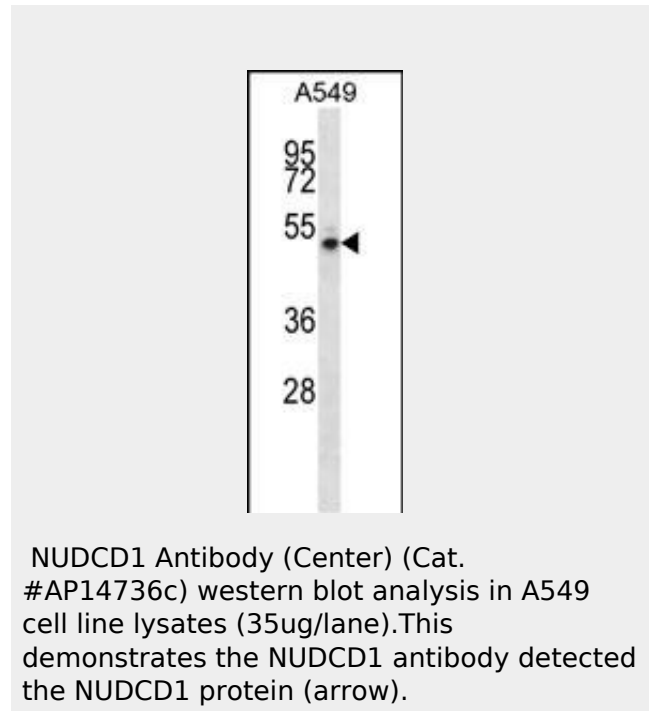
WB~~1:1000

**Format**

Purified polyclonal antibody supplied in PBS with 0.09% (W/V) sodium azide. This antibody is purified through a protein A column, followed by peptide affinity purification.

**Storage**

Maintain refrigerated at 2-8°C for up to 2 weeks. For long term storage store at -20°C in small aliquots to prevent freeze-thaw



**NUDCD1 Antibody (Center) - Background**

NUDCD1 (CML66) contains 1 CS domain. It may play an oncogenic role in ways of favoring tumor cells proliferation, invasion and metastasis-associated with multiple pathways. NUDCD1 is expressed in leukemias and a variety of solid tumor cell lines. Northern blot analysis showed expression in normal tissues restricted to testis and heart, and no expression was found in hematopoietic tissues.

**NUDCD1 Antibody (Center) - References**

- Wang, Q., et al. Cancer Lett. 269(1):127-138(2008)
- Jin, S., et al. Cancer Sci. 99(8):1670-1678(2008)
- Yan, Y., et al. J. Immunol. 172(1):651-660(2004)
- Yang, X.F., et al. Proc. Natl. Acad. Sci. U.S.A. 98(13):7492-7497(2001)

cycles.

### **Precautions**

NUDCD1 Antibody (Center) is for research use only and not for use in diagnostic or therapeutic procedures.

### **NUDCD1 Antibody (Center) - Protein Information**

**Name** NUDCD1 ([HGNC:24306](#))

### **Cellular Location**

[Isoform 1]: Cytoplasm. Nucleus. [Isoform 3]: Cytoplasm. Nucleus.

### **Tissue Location**

Isoform 1 is specifically expressed in leukemias and a variety of solid tumor cell lines and is also detected in testis and heart. Isoform 2 is predominantly expressed in testis and weakly expressed in tumor cells.

### **NUDCD1 Antibody (Center) - Protocols**

Provided below are standard protocols that you may find useful for product applications.

- [Western Blot](#)
- [Blocking Peptides](#)
- [Dot Blot](#)
- [Immunohistochemistry](#)
- [Immunofluorescence](#)
- [Immunoprecipitation](#)
- [Flow Cytometry](#)
- [Cell Culture](#)