

UBE4A Antibody (Center)
Affinity Purified Rabbit Polyclonal Antibody (Pab)
Catalog # AP14678c

Specification

UBE4A Antibody (Center) - Product Information

Application	WB, IHC-P,E
Primary Accession	Q14139
Other Accession	A5PKG6 , NP_004779.2
Reactivity	Human
Predicted	Bovine
Host	Rabbit
Clonality	Polyclonal
Isotype	Rabbit Ig
Antigen Region	451-479

UBE4A Antibody (Center) - Additional Information

Gene ID 9354

Other Names

Ubiquitin conjugation factor E4 A, 632-,
UBE4A (http://www.genenames.org/cgi-bin/gene_symbol_report?hgnc_id=12499 target="_blank">HGNC:12499)

Target/Specificity

This UBE4A antibody is generated from rabbits immunized with a KLH conjugated synthetic peptide between 451-479 amino acids from the Central region of human UBE4A.

Dilution

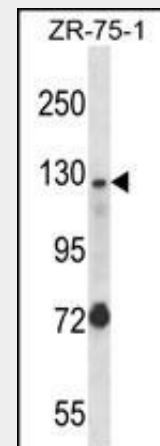
WB~~1:1000
IHC-P~~1:10~50

Format

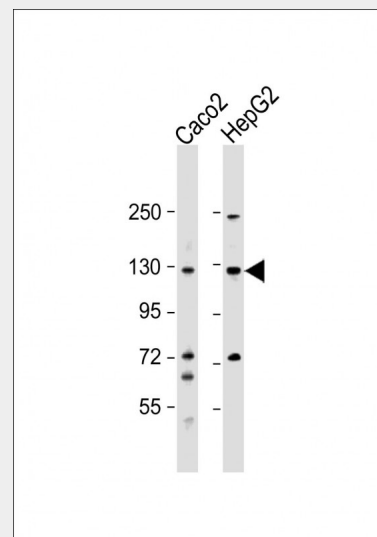
Purified polyclonal antibody supplied in PBS with 0.09% (W/V) sodium azide. This antibody is purified through a protein A column, followed by peptide affinity purification.

Storage

Maintain refrigerated at 2-8°C for up to 2 weeks. For long term storage store at -20°C in small aliquots to prevent freeze-thaw cycles.



UBE4A Antibody (Center) (Cat. #AP14678c) western blot analysis in ZR-75-1 cell line lysates (35ug/lane). This demonstrates the UBE4A antibody detected the UBE4A protein (arrow).



All lanes : Anti-UBE4A Antibody (Center) at 1:1000 dilution Lane 1: Caco2 whole cell lysate Lane 2: HepG2 whole cell lysate Lysates/proteins at 20 µg per lane. Secondary Goat Anti-Rabbit IgG, (H+L), Peroxidase conjugated at 1/10000 dilution. Predicted band size : 123 kDa Blocking/Dilution buffer: 5% NFDM/TBST.

Precautions

UBE4A Antibody (Center) is for research use only and not for use in diagnostic or therapeutic procedures.

UBE4A Antibody (Center) - Protein Information

Name UBE4A ([HGNC:12499](#))

Function

Ubiquitin-protein ligase that probably functions as an E3 ligase in conjunction with specific E1 and E2 ligases. May also function as an E4 ligase mediating the assembly of polyubiquitin chains on substrates ubiquitinated by another E3 ubiquitin ligase. Mediates 'Lys-48'-linked polyubiquitination of substrates.

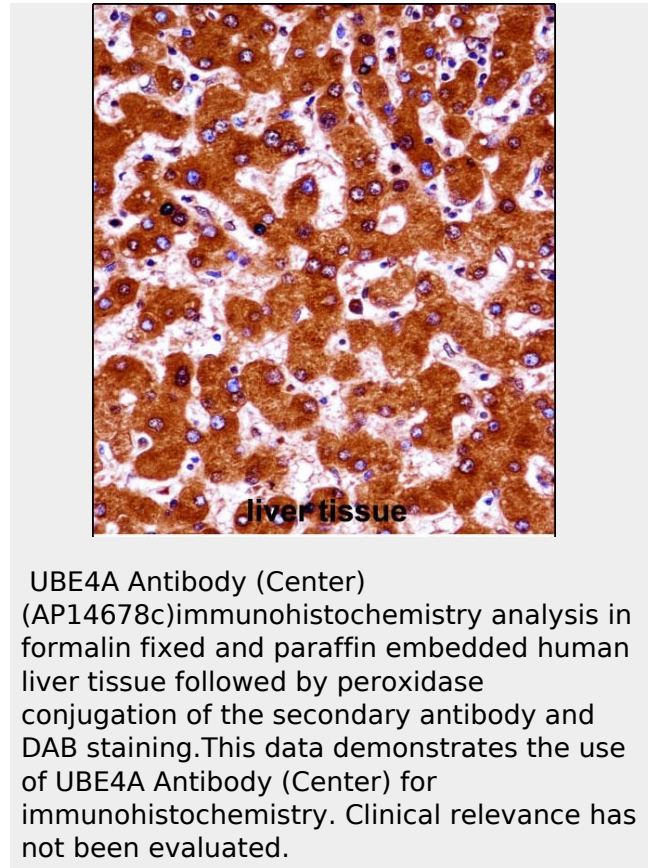
Cellular Location

Cytoplasm
{ECO:0000250|UniProtKB:E9Q735}.

UBE4A Antibody (Center) - Protocols

Provided below are standard protocols that you may find useful for product applications.

- [Western Blot](#)
- [Blocking Peptides](#)
- [Dot Blot](#)
- [Immunohistochemistry](#)
- [Immunofluorescence](#)
- [Immunoprecipitation](#)
- [Flow Cytometry](#)
- [Cell Culture](#)



UBE4A Antibody (Center) - Background

The modification of proteins with ubiquitin is an important cellular mechanism for targeting abnormal or short-lived proteins for degradation. Ubiquitination involves at least three classes of enzymes: ubiquitin-activating enzymes, or E1s, ubiquitin-conjugating enzymes, or E2s, and ubiquitin-protein ligases, or E3s. This gene encodes an additional conjugation factor, E4, which is involved in multiubiquitin chain assembly.

UBE4A Antibody (Center) - References

- Shi, D., et al. Proc. Natl. Acad. Sci. U.S.A. 106(38):16275-16280(2009)
Sakiyama, T., et al. Inflamm. Bowel Dis. 14(3):310-317(2008)
Yang, Y., et al. Xi Bao Yu Fen Zi Mian Yi Xue Za Zhi 23(6):504-506(2007)
Ewing, R.M., et al. Mol. Syst. Biol. 3, 89 (2007) :
Spinette, S., et al. Cell Cycle

3(12):1638-1644(2004)