

**USP20 Antibody (Center)**  
**Affinity Purified Rabbit Polyclonal Antibody (Pab)**  
**Catalog # AP14495C**

**Specification**

**USP20 Antibody (Center) - Product Information**

Application	<b>WB,E</b>
Primary Accession	<a href="#">Q9Y2K6</a>
Other Accession	<a href="#">Q8C6M1</a> , <a href="#">A7Z056</a> , <a href="#">NP_006667.3</a> , <a href="#">NP_001008563.2</a>
Reactivity	<b>Human, Mouse</b>
Predicted	<b>Bovine</b>
Host	<b>Rabbit</b>
Clonality	<b>Polyclonal</b>
Isotype	<b>Rabbit Ig</b>
Calculated MW	<b>102003</b>
Antigen Region	<b>310-339</b>

**USP20 Antibody (Center) - Additional Information**

**Gene ID** 10868

**Other Names**

Ubiquitin carboxyl-terminal hydrolase 20,  
Deubiquitinating enzyme 20, Ubiquitin  
thioesterase 20,  
Ubiquitin-specific-processing protease 20,  
VHL-interacting deubiquitinating enzyme 2,  
hVDU2, USP20, KIAA1003, LSFR3A, VDU2

**Target/Specificity**

This USP20 antibody is generated from rabbits immunized with a KLH conjugated synthetic peptide between 310-339 amino acids from the Central region of human USP20.

**Dilution**

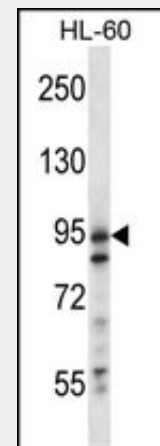
WB~~1:1000

**Format**

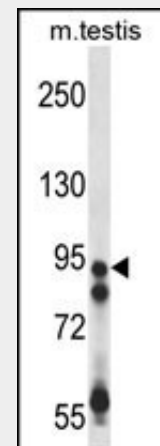
Purified polyclonal antibody supplied in PBS with 0.09% (W/V) sodium azide. This antibody is purified through a protein A column, followed by peptide affinity purification.

**Storage**

Maintain refrigerated at 2-8°C for up to 2 weeks. For long term storage store at -20°C



USP20 Antibody (Center) (Cat. #AP14495c) western blot analysis in HL-60 cell line lysates (35ug/lane). This demonstrates the USP20 antibody detected the USP20 protein (arrow).



USP20 Antibody (Center) (Cat. #AP14495c) western blot analysis in mouse testis tissue lysates (35ug/lane). This demonstrates the USP20 antibody detected the USP20 protein (arrow).

**USP20 Antibody (Center) - Background**

Deubiquitinating enzyme involved in beta-2 adrenergic receptor (ADRB2) recycling. Acts as a regulator of G-protein coupled receptor (GPCR) signaling by mediating the

in small aliquots to prevent freeze-thaw cycles.

### Precautions

USP20 Antibody (Center) is for research use only and not for use in diagnostic or therapeutic procedures.

### USP20 Antibody (Center) - Protein Information

**Name** USP20

**Synonyms** KIAA1003, LSFR3A, VDU2

### Function

Deubiquitinating enzyme involved in beta-2 adrenergic receptor (ADRB2) recycling. Acts as a regulator of G-protein coupled receptor (GPCR) signaling by mediating the deubiquitination beta-2 adrenergic receptor (ADRB2). Plays a central role in ADRB2 recycling and resensitization after prolonged agonist stimulation by constitutively binding ADRB2, mediating deubiquitination of ADRB2 and inhibiting lysosomal trafficking of ADRB2. Upon dissociation, it is probably transferred to the translocated beta-arrestins, possibly leading to beta-arrestins deubiquitination and disengagement from ADRB2. This suggests the existence of a dynamic exchange between the ADRB2 and beta-arrestins. Deubiquitinates DIO2, thereby regulating thyroid hormone regulation. Deubiquitinates HIF1A, leading to stabilize HIF1A and enhance HIF1A-mediated activity. Mediates deubiquitination of both 'Lys-48'- and 'Lys-63'-linked polyubiquitin chains.

### Cellular Location

Cytoplasm, perinuclear region. Cytoplasm, cytoskeleton, microtubule organizing center, centrosome. Note=According to PubMed:12865408, it localizes in the endoplasmic reticulum; however the relevance of such result is unclear

deubiquitination beta-2 adrenergic receptor (ADRB2). Plays a central role in ADRB2 recycling and resensitization after prolonged agonist stimulation by constitutively binding ADRB2, mediating deubiquitination of ADRB2 and inhibiting lysosomal trafficking of ADRB2. Upon dissociation, it is probably transferred to the translocated beta-arrestins, possibly leading to beta-arrestins deubiquitination and disengagement from ADRB2. This suggests the existence of a dynamic exchange between the ADRB2 and beta-arrestins. Deubiquitinates DIO2, thereby regulating thyroid hormone regulation. Deubiquitinates HIF1A, leading to stabilize HIF1A and enhance HIF1A-mediated activity. Mediates deubiquitination of both 'Lys-48'-and 'Lys-63'-linked polyubiquitin chains.

### USP20 Antibody (Center) - References

- Yoshida, T., et al. Int. J. Mol. Med. 25(4):649-656(2010)  
Oguri, M., et al. Am. J. Hypertens. 23(1):70-77(2010)  
Berthouze, M., et al. EMBO J. 28(12):1684-1696(2009)  
Olsen, J.V., et al. Cell 127(3):635-648(2006)  
Li, Z., et al. EMBO Rep. 6(4):373-378(2005)

### USP20 Antibody (Center) - Protocols

Provided below are standard protocols that you may find useful for product applications.

- [Western Blot](#)

- [Blocking Peptides](#)
- [Dot Blot](#)
- [Immunohistochemistry](#)
- [Immunofluorescence](#)
- [Immunoprecipitation](#)
- [Flow Cytometry](#)
- [Cell Culture](#)