

TMC6 Antibody (N-term)
Affinity Purified Rabbit Polyclonal Antibody (Pab)
Catalog # AP14212a

Specification

TMC6 Antibody (N-term) - Product Information

Application	WB,E
Primary Accession	O7Z403
Other Accession	NP_009198.4 , NP_001120670.1
Reactivity	Human
Host	Rabbit
Clonality	Polyclonal
Isotype	Rabbit Ig
Calculated MW	90045
Antigen Region	160-188

TMC6 Antibody (N-term) - Additional Information

Gene ID 11322

Other Names

Transmembrane channel-like protein 6,
Epidermodysplasia verruciformis protein 1,
Protein LAK-4, TMC6, EVER1, EVIN1

Target/Specificity

This TMC6 antibody is generated from rabbits immunized with a KLH conjugated synthetic peptide between 160-188 amino acids from the N-terminal region of human TMC6.

Dilution

WB~~1:1000

Format

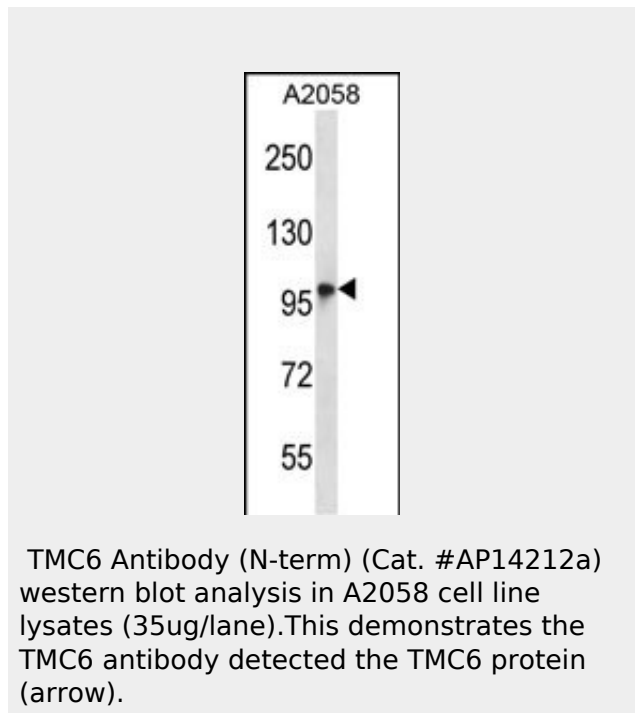
Purified polyclonal antibody supplied in PBS with 0.09% (W/V) sodium azide. This antibody is purified through a protein A column, followed by peptide affinity purification.

Storage

Maintain refrigerated at 2-8°C for up to 2 weeks. For long term storage store at -20°C in small aliquots to prevent freeze-thaw cycles.

Precautions

TMC6 Antibody (N-term) is for research use



TMC6 Antibody (N-term) - Background

Epidermodysplasia verruciformis (EV) is an autosomal recessive dermatosis characterized by abnormal susceptibility to human papillomaviruses (HPVs) and a high rate of progression to squamous cell carcinoma on sun-exposed skin. EV is caused by mutations in either of two adjacent genes located on chromosome 17q25.3. Both of these genes encode integral membrane proteins that localize to the endoplasmic reticulum and are predicted to form transmembrane channels. This gene encodes a transmembrane channel-like protein with 10 transmembrane domains and 2 leucine zipper motifs.

TMC6 Antibody (N-term) - References

McDermott, D.F., et al. *Pediatr Dermatol*

only and not for use in diagnostic or therapeutic procedures.

TMC6 Antibody (N-term) - Protein Information

Name TMC6

Synonyms EVER1, EVIN1

Function

Probable ion channel.

Cellular Location

Endoplasmic reticulum membrane;
Multi-pass membrane protein

Tissue Location

Expressed in placenta, prostate, testis, activated T-lymphocytes and lymphokine-activated killer (LAK) lymphocytes
{ECO:0000269|PubMed:12906855, ECO:0000269|Ref.3}

26(3):306-310(2009)

Lazarczyk, M., et al. J. Exp. Med. 205(1):35-42(2008)

Zuo, Y.G., et al. J. Dermatol. Sci. 44(3):153-159(2006)

Olsen, J.V., et al. Cell 127(3):635-648(2006)

Donfack, J., et al. Int. J. Pediatr. Otorhinolaryngol. 70(7):1235-1240(2006)

TMC6 Antibody (N-term) - Protocols

Provided below are standard protocols that you may find useful for product applications.

- [Western Blot](#)
- [Blocking Peptides](#)
- [Dot Blot](#)
- [Immunohistochemistry](#)
- [Immunofluorescence](#)
- [Immunoprecipitation](#)
- [Flow Cytometry](#)
- [Cell Culture](#)