

**Mouse Camk2b Antibody (Center)**  
**Affinity Purified Rabbit Polyclonal Antibody (Pab)**  
Catalog # AP14185c

**Specification**

**Mouse Camk2b Antibody (Center) - Product Information**

Application	WB,E
Primary Accession	<a href="#">P28652</a>
Other Accession	<a href="#">P08413</a> , <a href="#">Q13554</a> , <a href="#">Q3MHJ9</a> , <a href="#">NP_031621.3</a>
Reactivity Predicted	Mouse Bovine, Human, Rat
Host	Rabbit
Clonality	Polyclonal
Isotype	Rabbit Ig
Calculated MW	60461
Antigen Region	168-196

**Mouse Camk2b Antibody (Center) - Additional Information**

**Gene ID** 12323

**Other Names**

Calcium/calmodulin-dependent protein kinase type II subunit beta, CaM kinase II subunit beta, CaMK-II subunit beta, Camk2b, Camk2d

**Target/Specificity**

This Mouse Camk2b antibody is generated from rabbits immunized with a KLH conjugated synthetic peptide between 168-196 amino acids from the Central region of mouse Camk2b.

**Dilution**

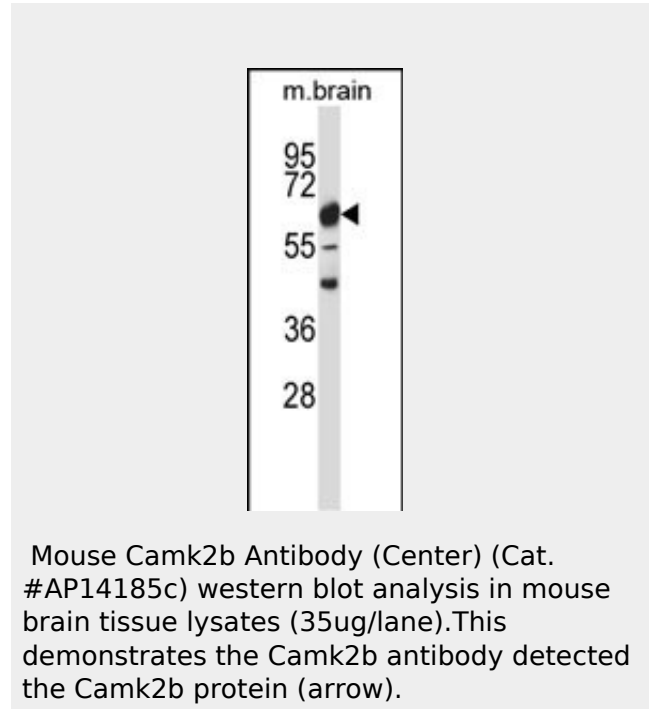
WB~~1:1000

**Format**

Purified polyclonal antibody supplied in PBS with 0.09% (W/V) sodium azide. This antibody is purified through a protein A column, followed by peptide affinity purification.

**Storage**

Maintain refrigerated at 2-8°C for up to 2



**Mouse Camk2b Antibody (Center) - Background**

CaM-kinase II (CAMK2) is a prominent kinase in the central nervous system that may function in long-term potentiation and neurotransmitter release. Member of the NMDAR signaling complex in excitatory synapses it may regulate NMDAR-dependent potentiation of the AMPAR and synaptic plasticity (By similarity).

**Mouse Camk2b Antibody (Center) - References**

- Martinez-Pena y Valenzuela, I., et al. J. Neurosci. 30(37):12455-12465(2010)
- Jin, X.L., et al. Biol. Reprod. 82(2):459-468(2010)
- van Woerden, G.M., et al. Nat. Neurosci. 12(7):823-825(2009)
- Butcher, A.J., et al. J. Biol. Chem. 284(25):17147-17156(2009)
- Cheng, T.W., et al. Eur. J. Neurosci. 29(6):1083-1095(2009)

weeks. For long term storage store at  $-20^{\circ}\text{C}$  in small aliquots to prevent freeze-thaw cycles.

### Precautions

Mouse Camk2b Antibody (Center) is for research use only and not for use in diagnostic or therapeutic procedures.

### Mouse Camk2b Antibody (Center) - Protein Information

**Name** Camk2b

**Synonyms** Camk2d

### Function

Calcium/calmodulin-dependent protein kinase that functions autonomously after  $\text{Ca}(2+)$ /calmodulin-binding and autophosphorylation, and is involved in dendritic spine and synapse formation, neuronal plasticity and regulation of sarcoplasmic reticulum  $\text{Ca}(2+)$  transport in skeletal muscle. In neurons, plays an essential structural role in the reorganization of the actin cytoskeleton during plasticity by binding and bundling actin filaments in a kinase-independent manner. This structural function is required for correct targeting of CaMK2A, which acts downstream of NMDAR to promote dendritic spine and synapse formation and maintain synaptic plasticity which enables long-term potentiation (LTP) and hippocampus-dependent learning. In developing hippocampal neurons, promotes arborization of the dendritic tree and in mature neurons, promotes dendritic remodeling. Also regulates the migration of developing neurons (PubMed:<a href="http://www.uniprot.org/citations/29100089" target="\_blank">29100089</a>). Participates in the modulation of skeletal muscle function in response to exercise. In slow-twitch muscles, is involved in regulation of sarcoplasmic reticulum (SR)  $\text{Ca}(2+)$  transport and in fast-twitch muscle participates in the control of  $\text{Ca}(2+)$  release from the SR through phosphorylation of triadin, a ryanodine receptor-coupling factor, and phospholamban (PLN/PLB), an endogenous inhibitor of SERCA2A/ATP2A2 (PubMed:<a href="http://www.uniprot.org/citations/21752990" target="\_blank">21752990</a>).

**Cellular Location**

Cytoplasm, cytoskeleton. Cytoplasm, cytoskeleton, microtubule organizing center, centrosome. Sarcoplasmic reticulum membrane; Peripheral membrane protein; Cytoplasmic side. Cell junction, synapse {ECO:0000250|UniProtKB:P08413}

**Mouse Camk2b Antibody (Center) - Protocols**

Provided below are standard protocols that you may find useful for product applications.

- [Western Blot](#)
- [Blocking Peptides](#)
- [Dot Blot](#)
- [Immunohistochemistry](#)
- [Immunofluorescence](#)
- [Immunoprecipitation](#)
- [Flow Cytometry](#)
- [Cell Culture](#)