

**Mouse Oxsr1 Antibody (N-term)**  
**Affinity Purified Rabbit Polyclonal Antibody (Pab)**  
**Catalog # AP14158a**

**Specification**

**Mouse Oxsr1 Antibody (N-term) - Product Information**

Application	WB, IHC-P,E
Primary Accession	<a href="#">Q6P9R2</a>
Other Accession	<a href="#">NP_598746.1</a>
Reactivity	Human, Mouse
Host	Rabbit
Clonality	Polyclonal
Isotype	Rabbit Ig
Calculated MW	58214
Antigen Region	94-121

**Mouse Oxsr1 Antibody (N-term) - Additional Information**

**Gene ID** 108737

**Other Names**

Serine/threonine-protein kinase OSR1,  
Oxidative stress-responsive 1 protein, Oxsr1  
{ECO:0000312|MGI:MGI:1917378}

**Target/Specificity**

This Mouse Oxsr1 antibody is generated from rabbits immunized with a KLH conjugated synthetic peptide between 94-121 amino acids from the N-terminal region of mouse Oxsr1.

**Dilution**

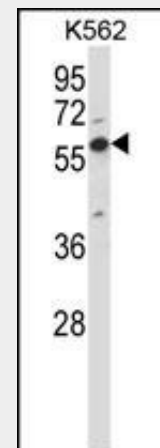
WB~~1:1000  
IHC-P~~1:10~50

**Format**

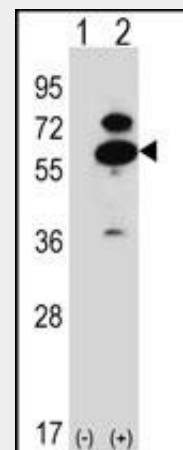
Purified polyclonal antibody supplied in PBS with 0.09% (W/V) sodium azide. This antibody is purified through a protein A column, followed by peptide affinity purification.

**Storage**

Maintain refrigerated at 2-8°C for up to 2 weeks. For long term storage store at -20°C in small aliquots to prevent freeze-thaw cycles.



Mouse Oxsr1 Antibody (N-term) (Cat. #AP14158a) western blot analysis in K562 cell line lysates (35ug/lane). This demonstrates the Oxsr1 antibody detected the Oxsr1 protein (arrow).



Western blot analysis of Oxsr1 (arrow) using rabbit polyclonal Mouse Oxsr1 Antibody (N-term) (Cat. #AP14158a). 293 cell lysates (2 ug/lane) either nontransfected (Lane 1) or transiently transfected (Lane 2) with the Oxsr1 gene.

### Precautions

Mouse Oxsr1 Antibody (N-term) is for research use only and not for use in diagnostic or therapeutic procedures.

### Mouse Oxsr1 Antibody (N-term) - Protein Information

#### Name Oxsr1

{ECO:0000312|MGI:MGI:1917378}

#### Function

Phosphorylates RELL1, RELL2, RELT and PAK1. Phosphorylates PLSCR1 in the presence of RELT.

#### Cellular Location

Cytoplasm

{ECO:0000250|UniProtKB:O95747}.

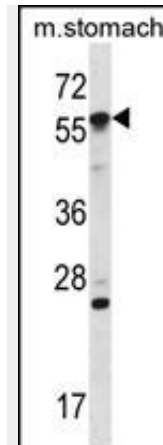
#### Tissue Location

Ubiquitously expressed in all tissues examined, except thymus.

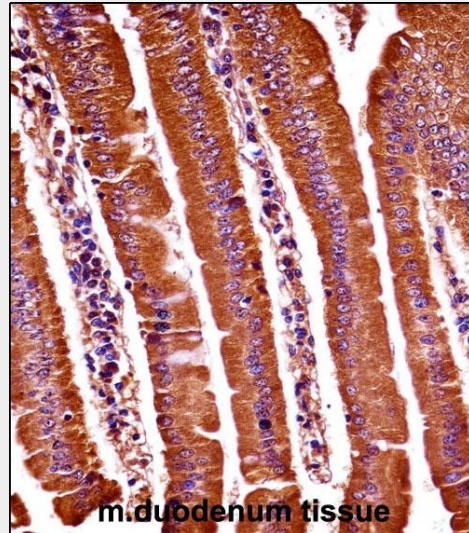
### Mouse Oxsr1 Antibody (N-term) - Protocols

Provided below are standard protocols that you may find useful for product applications.

- [Western Blot](#)
- [Blocking Peptides](#)
- [Dot Blot](#)
- [Immunohistochemistry](#)
- [Immunofluorescence](#)
- [Immunoprecipitation](#)
- [Flow Cytometry](#)
- [Cell Culture](#)



Mouse Oxsr1 Antibody (N-term) (Cat. #AP14158a) western blot analysis in mouse stomach tissue lysates (35ug/lane). This demonstrates the Oxsr1 antibody detected the Oxsr1 protein (arrow).



Mouse Oxsr1 Antibody (N-term) (AP14158a) immunohistochemistry analysis in formalin fixed and paraffin embedded mouse duodenum tissue followed by peroxidase conjugation of the secondary antibody and DAB staining. This data demonstrates the use of Mouse Oxsr1 Antibody (N-term) for immunohistochemistry. Clinical relevance has not been evaluated.

### Mouse Oxsr1 Antibody (N-term) - Background

Oxsr1 regulates downstream kinases in response to environmental stress. May also have a function in regulating the actin cytoskeleton.

**Mouse Oxsr1 Antibody (N-term) -  
References**

Hengl, T., et al. Proc. Natl. Acad. Sci. U.S.A.  
107(13):6052-6057(2010)  
Geng, Y., et al. J. Biol. Chem.  
284(21):14020-14028(2009)  
Vallon, V. Kidney Int. 74(11):1373-1375(2008)  
Chiga, M., et al. Kidney Int.  
74(11):1403-1409(2008)  
Gagnon, K.B., et al. Mol. Cell. Biol.  
26(2):689-698(2006)