

GDPD3 Antibody (N-term)
Affinity Purified Rabbit Polyclonal Antibody (Pab)
Catalog # AP13964A

Specification

GDPD3 Antibody (N-term) - Product Information

Application	WB, IHC-P,E
Primary Accession	Q7L5L3
Other Accession	NP_077283.2
Reactivity	Human
Host	Rabbit
Clonality	Polyclonal
Isotype	Rabbit Ig
Calculated MW	36596
Antigen Region	17-46

GDPD3 Antibody (N-term) - Additional Information

Gene ID 79153

Other Names

Glycerophosphodiester phosphodiesterase domain-containing protein 3, 31--, GDPD3

Target/Specificity

This GDPD3 antibody is generated from rabbits immunized with a KLH conjugated synthetic peptide between 17-46 amino acids from the N-terminal region of human GDPD3.

Dilution

WB~~1:1000
IHC-P~~1:10~50

Format

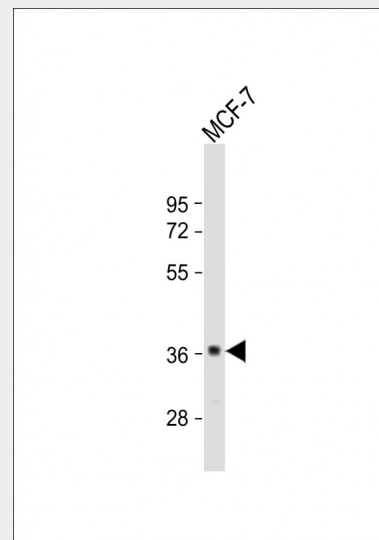
Purified polyclonal antibody supplied in PBS with 0.09% (W/V) sodium azide. This antibody is purified through a protein A column, followed by peptide affinity purification.

Storage

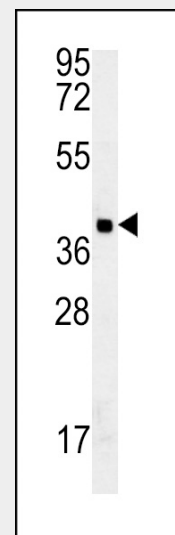
Maintain refrigerated at 2-8°C for up to 2 weeks. For long term storage store at -20°C in small aliquots to prevent freeze-thaw cycles.

Precautions

GDPD3 Antibody (N-term) is for research



Anti-GDPD3 Antibody (N-term) at 1:1000 dilution + MCF-7 whole cell lysate Lysates/proteins at 20 µg per lane. Secondary Goat Anti-Rabbit IgG, (H+L), Peroxidase conjugated at 1/10000 dilution. Predicted band size : 36 kDa Blocking/Dilution buffer: 5% NFDM/TBST.



GDPD3 Antibody (N-term) (Cat. #AP13964a) western blot analysis in MDA-MB435 cell line lysates (35ug/lane). This demonstrates the GDPD3 antibody detected the GDPD3 protein

use only and not for use in diagnostic or therapeutic procedures.

GDPD3 Antibody (N-term) - Protein Information

Name GDPD3 ([HGNC:28638](#))

Function

Hydrolyzes lysoglycerophospholipids to produce lysophosphatidic acid (LPA) and the corresponding amines (PubMed:27637550). Shows a preference for 1-O-alkyl-sn-glycero-3-phosphocholine (lyso-PAF), lysophosphatidylcholine (lyso-PC) and N-acylethanolamine lysophospholipids (PubMed:27637550). Does not display glycerophosphodiester phosphodiesterase activity, since it cannot hydrolyze either glycerophosphoinositol or glycerophosphocholine.

Cellular Location

Membrane
{ECO:0000250|UniProtKB:Q99LY2}; Multi-pass membrane protein
{ECO:0000250|UniProtKB:Q99LY2}.
Cytoplasm, perinuclear region
{ECO:0000250|UniProtKB:Q99LY2}.
Endoplasmic reticulum. Note=Partially co-localized with CANX.
{ECO:0000250|UniProtKB:Q99LY2}

Tissue Location

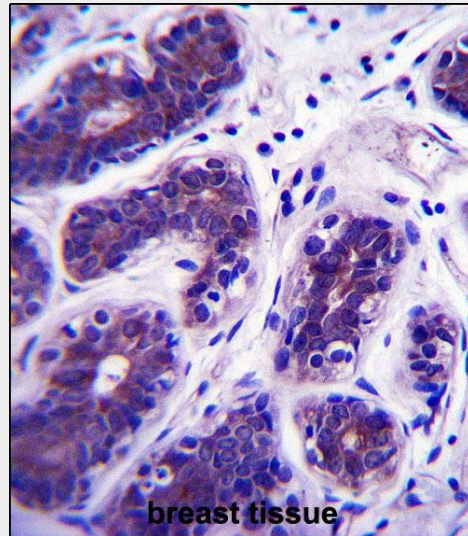
Widely expressed, with high level in kidney and ovary.

GDPD3 Antibody (N-term) - Protocols

Provided below are standard protocols that you may find useful for product applications.

- [Western Blot](#)
- [Blocking Peptides](#)
- [Dot Blot](#)
- [Immunohistochemistry](#)
- [Immunofluorescence](#)
- [Immunoprecipitation](#)
- [Flow Cytometry](#)
- [Cell Culture](#)

(arrow).



GDPD3 Antibody (N-term) (Cat. #AP13964a) immunohistochemistry analysis in formalin fixed and paraffin embedded human breast tissue followed by peroxidase conjugation of the secondary antibody and DAB staining. This data demonstrates the use of GDPD3 Antibody (N-term) for immunohistochemistry. Clinical relevance has not been evaluated.

GDPD3 Antibody (N-term) - Background

The exact function of this protein remains unknown.

GDPD3 Antibody (N-term) - References

Gerhard, D.S., et al. Genome Res. 14 (10B), 2121-2127 (2004) :