

**LYPL1 Antibody (Center)**  
**Affinity Purified Rabbit Polyclonal Antibody (Pab)**  
**Catalog # AP13955c**

**Specification**

**LYPL1 Antibody (Center) - Product Information**

Application	<b>WB, IHC-P, FC,E</b>
Primary Accession	<a href="#">O5VWZ2</a>
Other Accession	<a href="#">NP_620149.1</a>
Reactivity	<b>Human, Mouse</b>
Host	<b>Rabbit</b>
Clonality	<b>Polyclonal</b>
Isotype	<b>Rabbit Ig</b>
Calculated MW	<b>26316</b>
Antigen Region	<b>88-117</b>

**LYPL1 Antibody (Center) - Additional Information**

**Gene ID** 127018

**Other Names**

Lysophospholipase-like protein 1, 312-,  
LYPLAL1

**Target/Specificity**

This LYPL1 antibody is generated from rabbits immunized with a KLH conjugated synthetic peptide between 88-117 amino acids from the Central region of human LYPL1.

**Dilution**

WB~~1:1000  
IHC-P~~1:10~50  
FC~~1:10~50

**Format**

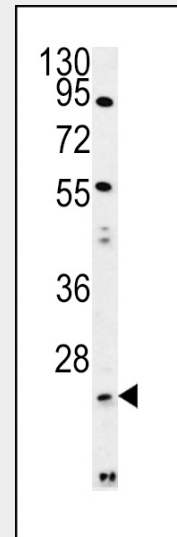
Purified polyclonal antibody supplied in PBS with 0.09% (W/V) sodium azide. This antibody is purified through a protein A column, followed by peptide affinity purification.

**Storage**

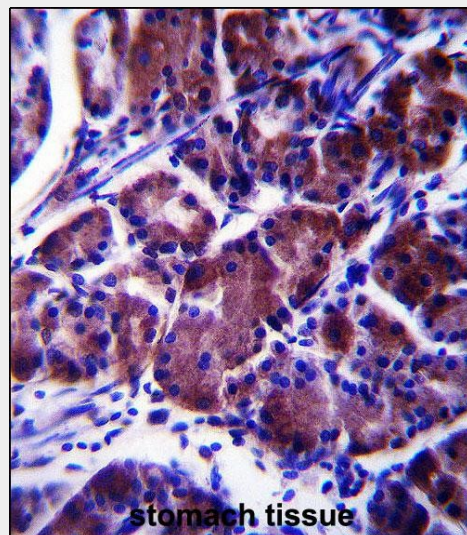
Maintain refrigerated at 2-8°C for up to 2 weeks. For long term storage store at -20°C in small aliquots to prevent freeze-thaw cycles.

**Precautions**

LYPL1 Antibody (Center) is for research use



LYPL1 Antibody (Center) (Cat. #AP13955c) western blot analysis in mouse Neuro-2a cell line lysates (35ug/lane). This demonstrates the LYPL1 antibody detected the LYPL1 protein (arrow).



LYPL1 Antibody (Center) (Cat. #AP13955c) immunohistochemistry analysis in formalin fixed and paraffin embedded human stomach tissue followed by peroxidase conjugation of the secondary antibody and DAB staining. This data

only and not for use in diagnostic or therapeutic procedures.

#### LYPL1 Antibody (Center) - Protein Information

**Name** LYPLAL1

#### Function

Has depalmitoylating activity toward KCNMA1. Does not exhibit phospholipase nor triacylglycerol lipase activity, able to hydrolyze only short chain substrates due to its shallow active site.

#### Cellular Location

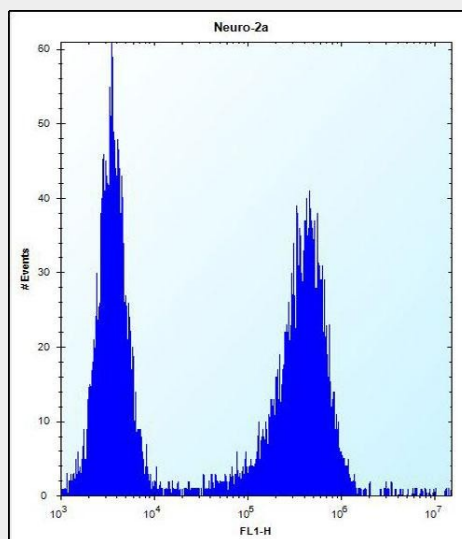
[Isoform 1]: Cytoplasm, cytosol

#### LYPL1 Antibody (Center) - Protocols

Provided below are standard protocols that you may find useful for product applications.

- [Western Blot](#)
- [Blocking Peptides](#)
- [Dot Blot](#)
- [Immunohistochemistry](#)
- [Immunofluorescence](#)
- [Immunoprecipitation](#)
- [Flow Cytometry](#)
- [Cell Culture](#)

demonstrates the use of LYPL1 Antibody (Center) for immunohistochemistry. Clinical relevance has not been evaluated.



LYPL1 Antibody (Center) (Cat. #AP13955c) flow cytometric analysis of Neuro-2a cells (right histogram) compared to a negative control cell (left histogram). FITC-conjugated donkey-anti-rabbit secondary antibodies were used for the analysis.

#### LYPL1 Antibody (Center) - Background

The exact function of this protein remains unknown.

#### LYPL1 Antibody (Center) - References

Hotta, K., et al. J. Hum. Genet. (2010) In press  
:  
Lindgren, C.M., et al. PLoS Genet. 5 (6),  
E1000508 (2009) :  
David, D., et al. Genomics 81(5):489-503(2003)