

**TRAF3 Antibody (C-term)**  
**Affinity Purified Rabbit Polyclonal Antibody (Pab)**  
**Catalog # AP13945b**

**Specification**

**TRAF3 Antibody (C-term) - Product Information**

Application	<b>WB,E</b>
Primary Accession	<a href="#">O13114</a>
Other Accession	<a href="#">Q60803</a> , <a href="#">NP_663777.1</a> , <a href="#">NP_663778.1</a> , <a href="#">NP_003291.2</a>
Reactivity	<b>Human, Mouse</b>
Host	<b>Rabbit</b>
Clonality	<b>Polyclonal</b>
Isotype	<b>Rabbit Ig</b>
Calculated MW	<b>64490</b>
Antigen Region	<b>490-517</b>

**TRAF3 Antibody (C-term) - Additional Information**

**Gene ID 7187**

**Other Names**

TNF receptor-associated factor 3, 632-, CAP-1, CD40 receptor-associated factor 1, CRAF1, CD40-binding protein, CD40BP, LMP1-associated protein 1, LAP1, TRAF3, CAP1, CRAF1

**Target/Specificity**

This TRAF3 antibody is generated from rabbits immunized with a KLH conjugated synthetic peptide between 490-517 amino acids from the C-terminal region of human TRAF3.

**Dilution**

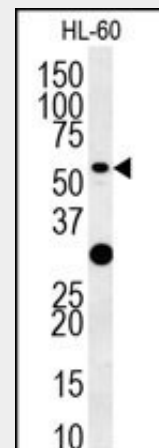
WB~~1:1000

**Format**

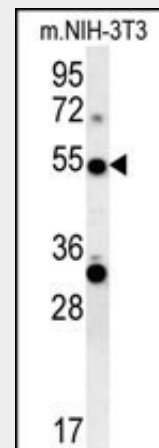
Purified polyclonal antibody supplied in PBS with 0.09% (W/V) sodium azide. This antibody is purified through a protein A column, followed by peptide affinity purification.

**Storage**

Maintain refrigerated at 2-8°C for up to 2 weeks. For long term storage store at -20°C in small aliquots to prevent freeze-thaw



TRAF3 Antibody (C-term) (Cat. #AP13945b) western blot analysis in HL-60 cell line lysates (35ug/lane). This demonstrates the TRAF3 antibody detected the TRAF3 protein (arrow).



TRAF3 Antibody (C-term) (Cat. #AP13945b) western blot analysis in mouse NIH-3T3 cell line lysates (35ug/lane). This demonstrates the TRAF3 antibody detected the TRAF3 protein (arrow).

**TRAF3 Antibody (C-term) - Background**

The protein encoded by this gene is a member of the TNF receptor associated factor (TRAF) protein family. TRAF proteins

cycles.

### Precautions

TRAF3 Antibody (C-term) is for research use only and not for use in diagnostic or therapeutic procedures.

### TRAF3 Antibody (C-term) - Protein Information

**Name** TRAF3

**Synonyms** CAP1, CRAF1

### Function

Regulates pathways leading to the activation of NF-kappa-B and MAP kinases, and plays a central role in the regulation of B-cell survival. Part of signaling pathways leading to the production of cytokines and interferon. Required for normal antibody isotype switching from IgM to IgG. Plays a role T-cell dependent immune responses. Plays a role in the regulation of antiviral responses. Is an essential constituent of several E3 ubiquitin-protein ligase complexes. May have E3 ubiquitin-protein ligase activity and promote 'Lys-63'- linked ubiquitination of target proteins. Inhibits activation of NF- kappa-B in response to LTBR stimulation. Inhibits TRAF2-mediated activation of NF-kappa-B. Down-regulates proteolytic processing of NFKB2, and thereby inhibits non-canonical activation of NF-kappa-B. Promotes ubiquitination and proteasomal degradation of MAP3K14.

### Cellular Location

Cytoplasm. Endosome  
{ECO:0000250|UniProtKB:Q60803}.  
Mitochondrion. Note=Undergoes endocytosis together with TLR4 upon LPS signaling (By similarity) Associated with mitochondria in response to virus  
{ECO:0000250|UniProtKB:Q60803}

### TRAF3 Antibody (C-term) - Protocols

Provided below are standard protocols that you may find useful for product applications.

- [Western Blot](#)
- [Blocking Peptides](#)
- [Dot Blot](#)
- [Immunohistochemistry](#)

associate with, and mediate the signal transduction from, members of the TNF receptor (TNFR) superfamily. This protein participates in the signal transduction of CD40, a TNFR family member important for the activation of the immune response. This protein is found to be a critical component of the lymphotoxin-beta receptor (LTbetaR) signaling complex, which induces NF-kappaB activation and cell death initiated by LTbeta ligation. Epstein-Barr virus encoded latent infection membrane protein-1 (LMP1) can interact with this and several other members of the TRAF family, which may be essential for the oncogenic effects of LMP1. Three alternatively spliced transcript variants encoding two distinct isoforms have been reported.

### TRAF3 Antibody (C-term) - References

Bailey, S.D., et al. Diabetes Care 33(10):2250-2253(2010)  
Song, Y.J., et al. Virus Genes 41(2):174-180(2010)  
Perez de Diego, R., et al. Immunity 33(3):400-411(2010)  
del Rio-Espinola, A., et al. Pharmacogenomics 11(6):763-772(2010)  
Sanjo, H., et al. J. Biol. Chem. 285(22):17148-17155(2010)

- [Immunofluorescence](#)
- [Immunoprecipitation](#)
- [Flow Cytometry](#)
- [Cell Culture](#)