

HSPA12B Antibody (N-term)
Affinity Purified Rabbit Polyclonal Antibody (Pab)
Catalog # AP13579a

Specification

HSPA12B Antibody (N-term) - Product Information

Application	WB, IHC-P,E
Primary Accession	Q96MM6
Other Accession	Q9CZJ2 , NP_443202.3
Reactivity	Human
Predicted	Mouse
Host	Rabbit
Clonality	Polyclonal
Isotype	Rabbit Ig
Calculated MW	75688
Antigen Region	108-136

HSPA12B Antibody (N-term) - Additional Information

Gene ID 116835

Other Names

Heat shock 70 kDa protein 12B, HSPA12B, C20orf60

Target/Specificity

This HSPA12B antibody is generated from rabbits immunized with a KLH conjugated synthetic peptide between 108-136 amino acids from the N-terminal region of human HSPA12B.

Dilution

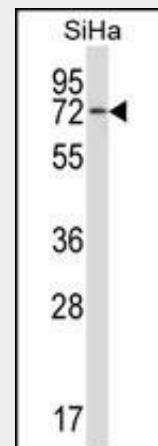
WB~~1:1000
IHC-P~~1:10~50

Format

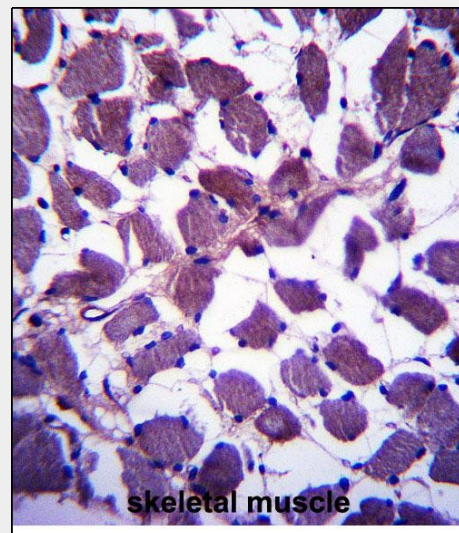
Purified polyclonal antibody supplied in PBS with 0.09% (W/V) sodium azide. This antibody is purified through a protein A column, followed by peptide affinity purification.

Storage

Maintain refrigerated at 2-8°C for up to 2 weeks. For long term storage store at -20°C in small aliquots to prevent freeze-thaw cycles.



HSPA12B Antibody (N-term) (Cat. #AP13579a) western blot analysis in SiHa cell line lysates (35ug/lane). This demonstrates the HSPA12B antibody detected the HSPA12B protein (arrow).



HSPA12B Antibody (N-term) (Cat. #AP13579a) immunohistochemistry analysis in formalin fixed and paraffin embedded human skeletal muscle followed by peroxidase conjugation of the secondary antibody and DAB staining. This data demonstrates the use of HSPA12B Antibody (N-term) for immunohistochemistry. Clinical relevance has not been evaluated.

Precautions

HSPA12B Antibody (N-term) is for research use only and not for use in diagnostic or therapeutic procedures.

HSPA12B Antibody (N-term) - Protein Information

Name HSPA12B

Synonyms C20orf60

Tissue Location

Highest expression in muscle and heart.
Lower levels in liver and kidney.

HSPA12B Antibody (N-term) - Protocols

Provided below are standard protocols that you may find useful for product applications.

- [Western Blot](#)
- [Blocking Peptides](#)
- [Dot Blot](#)
- [Immunohistochemistry](#)
- [Immunofluorescence](#)
- [Immunoprecipitation](#)
- [Flow Cytometry](#)
- [Cell Culture](#)

HSPA12B Antibody (N-term) - Background

The protein encoded by this gene contains an atypical heat shock protein 70 (Hsp70) ATPase domain and is therefore a distant member of the mammalian Hsp70 family. This gene may be involved in susceptibility to atherosclerosis. Alternative splicing results in multiple transcript variants.

HSPA12B Antibody (N-term) - References

Bailey, S.D., et al. Diabetes Care 33(10):2250-2253(2010)
Talmud, P.J., et al. Am. J. Hum. Genet. 85(5):628-642(2009)
Starr, J.M., et al. Mech. Ageing Dev. 129(12):745-751(2008)
Harris, S.E., et al. BMC Genet. 8, 43 (2007) :
Han, Z., et al. Proc. Natl. Acad. Sci. U.S.A. 100(3):1256-1261(2003)