

**WDR89 Antibody (C-term)**  
**Affinity Purified Rabbit Polyclonal Antibody (Pab)**  
**Catalog # AP13408b**

**Specification**

**WDR89 Antibody (C-term) - Product Information**

Application	<b>WB, IHC-P,E</b>
Primary Accession	<a href="#">Q96FK6</a>
Other Accession	<a href="#">Q3ZBK1</a> , <a href="#">NP_001008726.1</a> , <a href="#">NP_542397.1</a>
Reactivity	<b>Human</b>
Predicted	<b>Bovine</b>
Host	<b>Rabbit</b>
Clonality	<b>Polyclonal</b>
Isotype	<b>Rabbit Ig</b>
Calculated MW	<b>43215</b>
Antigen Region	<b>359-387</b>

**WDR89 Antibody (C-term) - Additional Information**

**Gene ID** 112840

**Other Names**

WD repeat-containing protein 89, WDR89, C14orf150

**Target/Specificity**

This WDR89 antibody is generated from rabbits immunized with a KLH conjugated synthetic peptide between 359-387 amino acids from the C-terminal region of human WDR89.

**Dilution**

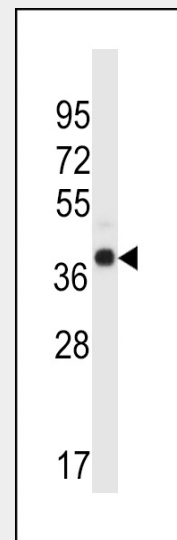
WB~~1:1000  
IHC-P~~1:10~50

**Format**

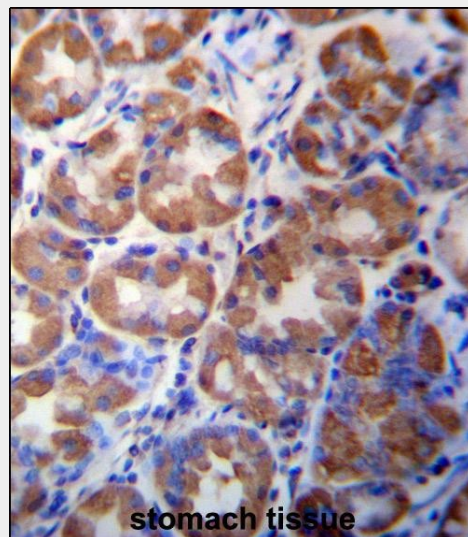
Purified polyclonal antibody supplied in PBS with 0.09% (W/V) sodium azide. This antibody is purified through a protein A column, followed by peptide affinity purification.

**Storage**

Maintain refrigerated at 2-8°C for up to 2 weeks. For long term storage store at -20°C in small aliquots to prevent freeze-thaw cycles.



WDR89 Antibody (C-term) (Cat. #AP13408b) western blot analysis in human normal Uterus tissue lysates (35ug/lane). This demonstrates the WDR89 antibody detected the WDR89 protein (arrow).



WDR89 Antibody (C-term) (Cat. #AP13408b) immunohistochemistry analysis in formalin fixed and paraffin embedded human stomach tissue followed by peroxidase conjugation of the secondary antibody and DAB staining. This data

**Precautions**

WDR89 Antibody (C-term) is for research use only and not for use in diagnostic or therapeutic procedures.

demonstrates the use of WDR89 Antibody (C-term) for immunohistochemistry. Clinical relevance has not been evaluated.

**WDR89 Antibody (C-term) - Protein Information**

**Name** WDR89

**Synonyms** C14orf150

**WDR89 Antibody (C-term) - Background**

The specific function of WDR89 remains unknown.

**WDR89 Antibody (C-term) - References**

Lamesch, P., et al. Genomics 89(3):307-315(2007) Andersen, J.S., et al. Nature 433(7021):77-83(2005)

**WDR89 Antibody (C-term) - Protocols**

Provided below are standard protocols that you may find useful for product applications.

- [Western Blot](#)
- [Blocking Peptides](#)
- [Dot Blot](#)
- [Immunohistochemistry](#)
- [Immunofluorescence](#)
- [Immunoprecipitation](#)
- [Flow Cytometry](#)
- [Cell Culture](#)