

**PRLH Antibody (Center)**  
**Affinity Purified Rabbit Polyclonal Antibody (Pab)**  
**Catalog # AP13150c**

**Specification**

**PRLH Antibody (Center) - Product Information**

Application	<b>WB, IHC-P,E</b>
Primary Accession	<a href="#">P81277</a>
Other Accession	<a href="#">NP_056977.1</a>
Reactivity	<b>Mouse</b>
Host	<b>Rabbit</b>
Clonality	<b>Polyclonal</b>
Isotype	<b>Rabbit Ig</b>
Calculated MW	<b>9639</b>
Antigen Region	<b>27-56</b>

**PRLH Antibody (Center) - Additional Information**

**Gene ID** 51052

**Other Names**

Prolactin-releasing peptide, PrRP,  
Prolactin-releasing hormone,  
Prolactin-releasing peptide PrRP31,  
Prolactin-releasing peptide PrRP20, PRLH,  
PRH

**Target/Specificity**

This PRLH antibody is generated from rabbits immunized with a KLH conjugated synthetic peptide between 27-56 amino acids from the Central region of human PRLH.

**Dilution**

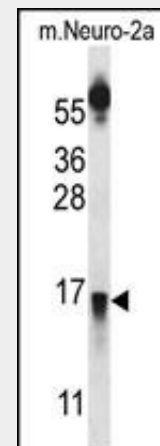
WB~~1:1000  
IHC-P~~1:10~50

**Format**

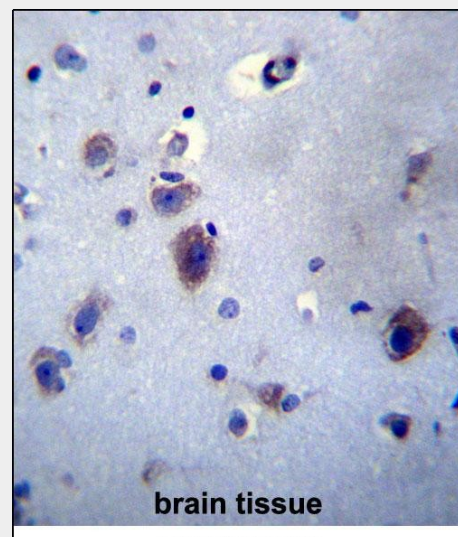
Purified polyclonal antibody supplied in PBS with 0.09% (W/V) sodium azide. This antibody is purified through a protein A column, followed by peptide affinity purification.

**Storage**

Maintain refrigerated at 2-8°C for up to 2 weeks. For long term storage store at -20°C in small aliquots to prevent freeze-thaw cycles.



PRLH Antibody (Center) (Cat. #AP13150c) western blot analysis in mouse Neuro-2a cell line lysates (35ug/lane). This demonstrates the PRLH antibody detected the PRLH protein (arrow).



PRLH Antibody (Center) (Cat. #AP13150c) immunohistochemistry analysis in formalin fixed and paraffin embedded human brain tissue followed by peroxidase conjugation of the secondary antibody and DAB staining. This data demonstrates the use of PRLH Antibody (Center) for immunohistochemistry. Clinical relevance has not been evaluated.

**Precautions**

PRLH Antibody (Center) is for research use only and not for use in diagnostic or therapeutic procedures.

**PRLH Antibody (Center) - Protein Information**

**Name** PRLH

**Synonyms** PRH

**Function**

Stimulates prolactin (PRL) release and regulates the expression of prolactin through its receptor GPR10. May stimulate lactotrophs directly to secrete PRL.

**Cellular Location**

Secreted.

**Tissue Location**

Medulla oblongata and hypothalamus.

**PRLH Antibody (Center) - Protocols**

Provided below are standard protocols that you may find useful for product applications.

- [Western Blot](#)
- [Blocking Peptides](#)
- [Dot Blot](#)
- [Immunohistochemistry](#)
- [Immunofluorescence](#)
- [Immunoprecipitation](#)
- [Flow Cytometry](#)
- [Cell Culture](#)

**PRLH Antibody (Center) - Background**

Stimulates prolactin (PRL) release and regulates the expression of prolactin through its receptor GPR10. May stimulate lactotrophs directly to secrete PRL.

**PRLH Antibody (Center) - References**

Lagerstrom, M.C., et al. Ann. N. Y. Acad. Sci. 1040, 368-370 (2005) :  
Takahashi, K., et al. Peptides 23(6):1135-1140(2002)  
Yasui, Y., et al. Endocr. J. 48(3):397-401(2001)  
Langmead, C.J., et al. Br. J. Pharmacol. 131(4):683-688(2000)  
Zhang, X., et al. J. Clin. Endocrinol. Metab. 84(12):4652-4655(1999)