

**NPTXR Antibody (Center)**  
**Affinity Purified Rabbit Polyclonal Antibody (Pab)**  
**Catalog # AP13143c**

**Specification**

**NPTXR Antibody (Center) - Product Information**

Application	<b>WB, IHC-P,E</b>
Primary Accession	<a href="#">O95502</a>
Other Accession	<a href="#">NP_055108.2</a>
Reactivity	<b>Human</b>
Host	<b>Rabbit</b>
Clonality	<b>Polyclonal</b>
Isotype	<b>Rabbit Ig</b>
Calculated MW	<b>52846</b>
Antigen Region	<b>180-209</b>

**NPTXR Antibody (Center) - Additional Information**

**Gene ID** 23467

**Other Names**

Neuronal pentraxin receptor, NPTXR

**Target/Specificity**

This NPTXR antibody is generated from rabbits immunized with a KLH conjugated synthetic peptide between 180-209 amino acids from the Central region of human NPTXR.

**Dilution**

WB~~1:1000  
IHC-P~~1:10~50

**Format**

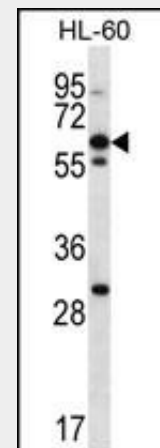
Purified polyclonal antibody supplied in PBS with 0.09% (W/V) sodium azide. This antibody is purified through a protein A column, followed by peptide affinity purification.

**Storage**

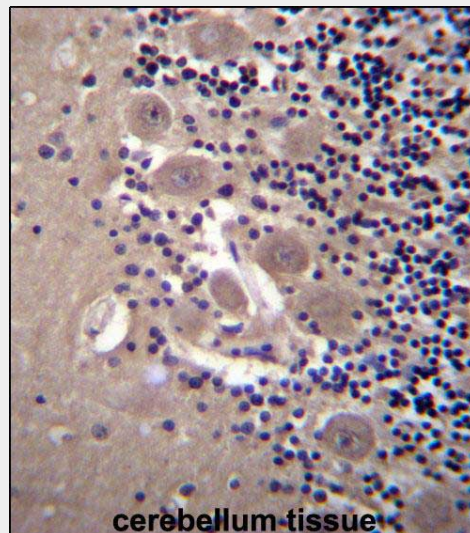
Maintain refrigerated at 2-8°C for up to 2 weeks. For long term storage store at -20°C in small aliquots to prevent freeze-thaw cycles.

**Precautions**

NPTXR Antibody (Center) is for research use only and not for use in diagnostic or therapeutic procedures.



NPTXR Antibody (Center) (Cat. #AP13143c) western blot analysis in HL-60 cell line lysates (35ug/lane). This demonstrates the NPTXR antibody detected the NPTXR protein (arrow).



NPTXR Antibody (Center) (Cat. #AP13143c) immunohistochemistry analysis in formalin fixed and paraffin embedded human cerebellum tissue followed by peroxidase conjugation of the secondary antibody and DAB staining. This data demonstrates the use of NPTXR Antibody (Center) for immunohistochemistry. Clinical relevance has not been evaluated.

### NPTXR Antibody (Center) - Protein Information

**Name** NPTXR

#### **Function**

May be involved in mediating uptake of synaptic material during synapse remodeling or in mediating the synaptic clustering of AMPA glutamate receptors at a subset of excitatory synapses.

#### **Cellular Location**

Membrane; Single-pass type II membrane protein

### NPTXR Antibody (Center) - Background

This gene encodes a protein similar to the rat neuronal pentraxin receptor. The rat pentraxin receptor is an integral membrane protein that is thought to mediate neuronal uptake of the snake venom toxin, taipoxin, and its transport into the synapses. Studies in rat indicate that translation of this mRNA initiates at a non-AUG (CUG) codon. This may also be true for mouse and human, based on strong sequence conservation amongst these species.

### NPTXR Antibody (Center) - Protocols

Provided below are standard protocols that you may find useful for product applications.

- [Western Blot](#)
- [Blocking Peptides](#)
- [Dot Blot](#)
- [Immunohistochemistry](#)
- [Immunofluorescence](#)
- [Immunoprecipitation](#)
- [Flow Cytometry](#)
- [Cell Culture](#)

### NPTXR Antibody (Center) - References

Rose, J. Phd, et al. Mol. Med. (2010) In press :  
Yin, G.N., et al. Brain Res. 1265, 158-170 (2009) :  
Andersson, K.B., et al. Acta Physiol (Oxf) 186(1):17-27(2006)  
Poulsen, T.T., et al. Lung Cancer 50(3):329-337(2005)  
Kirkpatrick, L.L., et al. J. Biol. Chem. 275(23):17786-17792(2000)