

GPRASP2 Antibody (N-term)
Affinity Purified Rabbit Polyclonal Antibody (Pab)
Catalog # AP13135A

Specification

GPRASP2 Antibody (N-term) - Product Information

| | |
|-------------------|--|
| Application | WB, IHC-P,E |
| Primary Accession | Q96D09 |
| Other Accession | NP_001171805.1 , NP_001004051.1 |
| Reactivity | Mouse |
| Host | Rabbit |
| Clonality | Polyclonal |
| Isotype | Rabbit Ig |
| Calculated MW | 93773 |
| Antigen Region | 234-263 |

GPRASP2 Antibody (N-term) - Additional Information

Gene ID 100528062;114928

Other Names

G-protein coupled receptor-associated sorting protein 2, GASP-2, GPRASP2

Target/Specificity

This GPRASP2 antibody is generated from rabbits immunized with a KLH conjugated synthetic peptide between 234-263 amino acids from the N-terminal region of human GPRASP2.

Dilution

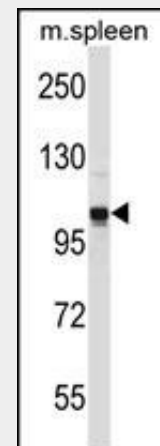
WB~~1:1000
IHC-P~~1:10~50

Format

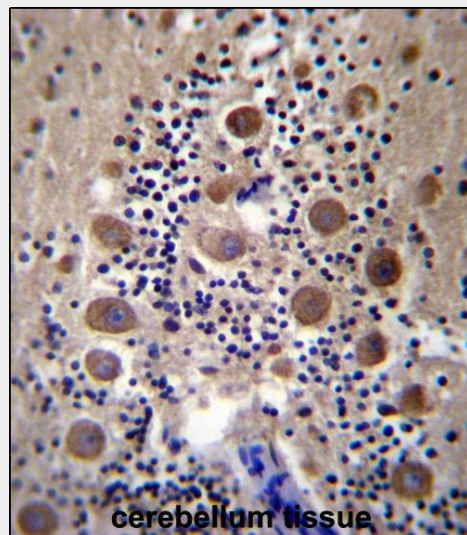
Purified polyclonal antibody supplied in PBS with 0.09% (W/V) sodium azide. This antibody is purified through a protein A column, followed by peptide affinity purification.

Storage

Maintain refrigerated at 2-8°C for up to 2 weeks. For long term storage store at -20°C in small aliquots to prevent freeze-thaw cycles.



GPRASP2 Antibody (N-term) (Cat. #AP13135a) western blot analysis in mouse spleen tissue lysates (35ug/lane). This demonstrates the GPRASP2 antibody detected the GPRASP2 protein (arrow).



GPRASP2 Antibody (N-term) (Cat. #AP13135a) immunohistochemistry analysis in formalin fixed and paraffin embedded human cerebellum tissue followed by peroxidase conjugation of the secondary antibody and DAB staining. This data demonstrates the use of GPRASP2 Antibody (N-term) for immunohistochemistry. Clinical relevance has not been evaluated.

Precautions

GPRASP2 Antibody (N-term) is for research use only and not for use in diagnostic or therapeutic procedures.

GPRASP2 Antibody (N-term) - Protein Information

Name GPRASP2

Function

May play a role in regulation of a variety of G-protein coupled receptors.

Tissue Location

Expressed in the brain.

GPRASP2 Antibody (N-term) - Protocols

Provided below are standard protocols that you may find useful for product applications.

- [Western Blot](#)
- [Blocking Peptides](#)
- [Dot Blot](#)
- [Immunohistochemistry](#)
- [Immunofluorescence](#)
- [Immunoprecipitation](#)
- [Flow Cytometry](#)
- [Cell Culture](#)

GPRASP2 Antibody (N-term) - Background

The protein encoded by this gene is a member of a family that regulates the activity of G protein-coupled receptors (GPCRs). The encoded protein has been shown to be capable of interacting with several GPCRs, including the M1 muscarinic acetylcholine receptor and the calcitonin receptor. Several transcript variants encoding the same protein have been found for this gene. [provided by RefSeq].

GPRASP2 Antibody (N-term) - References

Piton, A., et al. Mol. Psychiatry (2010) In press
:
Horn, S.C., et al. J Neural Transm 113(8):1081-1090(2006)
Goehler, H., et al. Mol. Cell 15(6):853-865(2004)
Beausoleil, S.A., et al. Proc. Natl. Acad. Sci. U.S.A. 101(33):12130-12135(2004)
Simonin, F., et al. J. Neurochem. 89(3):766-775(2004)