

PR15B Antibody (C-term)
Affinity Purified Rabbit Polyclonal Antibody (Pab)
Catalog # AP13118b

Specification

PR15B Antibody (C-term) - Product Information

Application	WB, IHC-P,E
Primary Accession	O5SWA1
Other Accession	NP_116222.3
Reactivity	Human
Host	Rabbit
Clonality	Polyclonal
Isotype	Rabbit Ig
Calculated MW	79152
Antigen Region	494-522

PR15B Antibody (C-term) - Additional Information

Other Names

Protein phosphatase 1 regulatory subunit
15B, PPP1R15B

Target/Specificity

This PR15B antibody is generated from rabbits immunized with a KLH conjugated synthetic peptide between 494-522 amino acids from the C-terminal region of human PR15B.

Dilution

WB~~1:1000
IHC-P~~1:10~50

Format

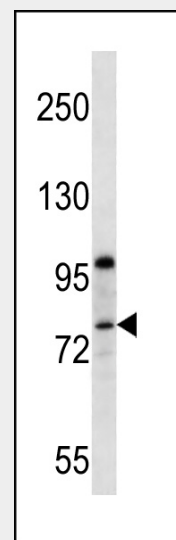
Purified polyclonal antibody supplied in PBS with 0.09% (W/V) sodium azide. This antibody is purified through a protein A column, followed by peptide affinity purification.

Storage

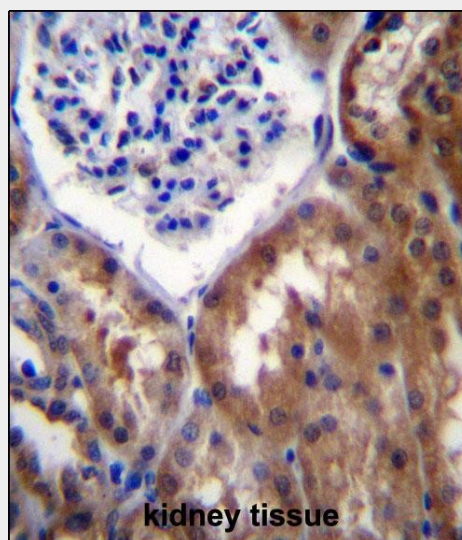
Maintain refrigerated at 2-8°C for up to 2 weeks. For long term storage store at -20°C in small aliquots to prevent freeze-thaw cycles.

Precautions

PR15B Antibody (C-term) is for research use only and not for use in diagnostic or therapeutic procedures.



PR15B Antibody (C-term) (Cat. #AP13118b) western blot analysis in MCF-7 cell line lysates (35ug/lane). This demonstrates the PR15B antibody detected the PR15B protein (arrow).



PR15B Antibdy (C-term) (Cat. #AP13118b) immunohistochemistry analysis in formalin fixed and paraffin embedded human kidney tissue followed by peroxidase conjugation of the secondary antibody and DAB staining. This data demonstrates the use

PR15B Antibody (C-term) - Protein Information**Name** PPP1R15B**Function**

Maintains low levels of EIF2S1 phosphorylation in unstressed cells by promoting its dephosphorylation by PP1.

PR15B Antibody (C-term) - Protocols

Provided below are standard protocols that you may find useful for product applications.

- [Western Blot](#)
- [Blocking Peptides](#)
- [Dot Blot](#)
- [Immunohistochemistry](#)
- [Immunofluorescence](#)
- [Immunoprecipitation](#)
- [Flow Cytometry](#)
- [Cell Culture](#)

of PR15B Antibody (C-term) for immunohistochemistry. Clinical relevance has not been evaluated.

PR15B Antibody (C-term) - Background

PPP1R15B promotes dephosphorylation of the transcription initiation factor EIF2-alpha (EIF2S1; MIM 603907) through recruitment of protein phosphatase-1 (PP1) catalytic subunits (see MIM 176875) (Harding et al., 2009 [PubMed 19181853]). [supplied by OMIM].

PR15B Antibody (C-term) - References

Harding, H.P., et al. Proc. Natl. Acad. Sci. U.S.A. 106(6):1832-1837(2009)
Colland, F., et al. Genome Res. 14(7):1324-1332(2004)
Ceulemans, H., et al. Bioessays 24(4):371-381(2002)