

**PGA4 Antibody (C-term)**  
**Affinity Purified Rabbit Polyclonal Antibody (Pab)**  
**Catalog # AP13025b**

**Specification**

**PGA4 Antibody (C-term) - Product Information**

Application	<b>WB, IHC-P,E</b>
Primary Accession	<a href="#">P0DJD7</a>
Other Accession	<a href="#">P0DJD9</a> , <a href="#">P28713</a> , <a href="#">P27822</a> , <a href="#">P0DJD8</a> , <a href="#">P27821</a> , <a href="#">P28712</a> , <a href="#">P00790</a> , <a href="#">NP_001073276.1</a>
Reactivity	<b>Human</b>
Predicted	<b>Rabbit</b>
Host	<b>Rabbit</b>
Clonality	<b>Polyclonal</b>
Isotype	<b>Rabbit Ig</b>
Calculated MW	<b>41977</b>
Antigen Region	<b>353-381</b>

**PGA4 Antibody (C-term) - Additional Information**

**Gene ID** 643847

**Other Names**

Pepsin A-4, Pepsinogen-4, PGA4

**Target/Specificity**

This PGA4 antibody is generated from rabbits immunized with a KLH conjugated synthetic peptide between 353-381 amino acids from the C-terminal region of human PGA4.

**Dilution**

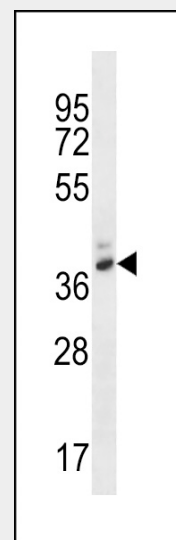
WB~~1:1000  
IHC-P~~1:10~50

**Format**

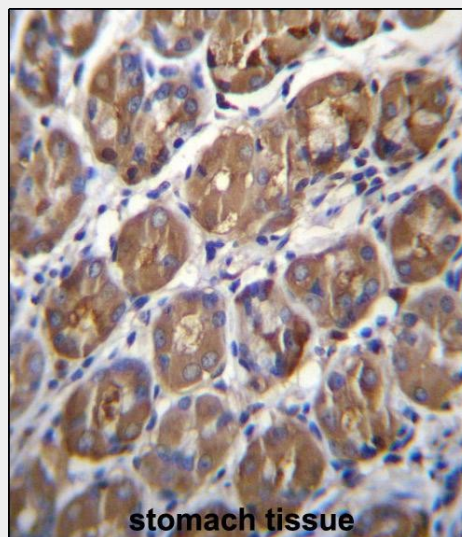
Purified polyclonal antibody supplied in PBS with 0.09% (W/V) sodium azide. This antibody is purified through a protein A column, followed by peptide affinity purification.

**Storage**

Maintain refrigerated at 2-8°C for up to 2 weeks. For long term storage store at -20°C in small aliquots to prevent freeze-thaw cycles.



PGA4 Antibody (C-term) (Cat. #AP13025b) western blot analysis in WiDr cell line lysates (35ug/lane). This demonstrates the PGA4 antibody detected the PGA4 protein (arrow).



PGA4 Antibody (C-term) (Cat. #AP13025b) immunohistochemistry analysis in formalin fixed and paraffin embedded human stomach tissue followed by peroxidase conjugation of the secondary antibody and DAB staining. This data demonstrates the use of PGA4 Antibody

### Precautions

PGA4 Antibody (C-term) is for research use only and not for use in diagnostic or therapeutic procedures.

### PGA4 Antibody (C-term) - Protein Information

**Name** PGA4

### Function

Shows particularly broad specificity; although bonds involving phenylalanine and leucine are preferred, many others are also cleaved to some extent.

### Cellular Location

Secreted.

### PGA4 Antibody (C-term) - Protocols

Provided below are standard protocols that you may find useful for product applications.

- [Western Blot](#)
- [Blocking Peptides](#)
- [Dot Blot](#)
- [Immunohistochemistry](#)
- [Immunofluorescence](#)
- [Immunoprecipitation](#)
- [Flow Cytometry](#)
- [Cell Culture](#)

(C-term) for immunohistochemistry. Clinical relevance has not been evaluated.

### PGA4 Antibody (C-term) - Background

PGA4 shows particularly broad specificity; although bonds involving phenylalanine and leucine are preferred, many others are also cleaved to some extent.

### PGA4 Antibody (C-term) - References

- Fujinaga, M., et al. Protein Sci. 4(5):960-972(1995)  
Athauda, S.B., et al. J. Biochem. 106(5):920-927(1989)  
Evers, M.P., et al. Genomics 4(3):232-239(1989)  
Foltmann, B. FEBS Lett. 241 (1-2), 69-72 (1988) :  
Ichihara, Y., et al. J. Biochem. 98(2):483-492(1985)