

TBL2 Antibody (N-term)
Affinity Purified Rabbit Polyclonal Antibody (Pab)
Catalog # AP12833a

Specification

TBL2 Antibody (N-term) - Product Information

Application	WB, IHC-P,E
Primary Accession	O9Y4P3
Other Accession	NP_036585.1
Reactivity	Human
Host	Rabbit
Clonality	Polyclonal
Isotype	Rabbit Ig
Calculated MW	49798
Antigen Region	43-72

TBL2 Antibody (N-term) - Additional Information

Gene ID 26608

Other Names

Transducin beta-like protein 2, WS beta-transducin repeats protein, WS-betaTRP, Williams-Beuren syndrome chromosomal region 13 protein, TBL2, WBSCR13

Target/Specificity

This TBL2 antibody is generated from rabbits immunized with a KLH conjugated synthetic peptide between 43-72 amino acids from the N-terminal region of human TBL2.

Dilution

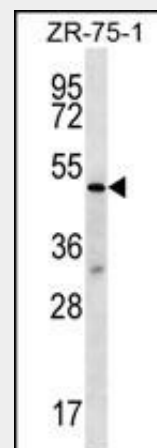
WB~~1:1000
IHC-P~~1:10~50

Format

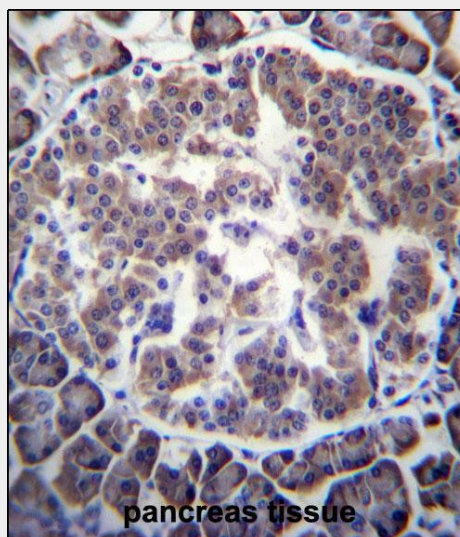
Purified polyclonal antibody supplied in PBS with 0.09% (W/V) sodium azide. This antibody is purified through a protein A column, followed by peptide affinity purification.

Storage

Maintain refrigerated at 2-8°C for up to 2 weeks. For long term storage store at -20°C in small aliquots to prevent freeze-thaw cycles.



TBL2 Antibody (N-term) (Cat. #AP12833a) western blot analysis in ZR-75-1 cell line lysates (35ug/lane). This demonstrates the TBL2 antibody detected the TBL2 protein (arrow).



TBL2 Antibody (N-term) (Cat. #AP12833a) immunohistochemistry analysis in formalin fixed and paraffin embedded human pancreas tissue followed by peroxidase conjugation of the secondary antibody and DAB staining. This data demonstrates the use of TBL2 Antibody (N-term) for immunohistochemistry. Clinical relevance has not been evaluated.

Precautions

TBL2 Antibody (N-term) is for research use only and not for use in diagnostic or therapeutic procedures.

TBL2 Antibody (N-term) - Protein Information

Name TBL2

Synonyms WBSCR13

TBL2 Antibody (N-term) - Protocols

Provided below are standard protocols that you may find useful for product applications.

- [Western Blot](#)
- [Blocking Peptides](#)
- [Dot Blot](#)
- [Immunohistochemistry](#)
- [Immunofluorescence](#)
- [Immunoprecipitation](#)
- [Flow Cytometry](#)
- [Cell Culture](#)

TBL2 Antibody (N-term) - Background

This gene encodes a member of the beta-transducin protein family. Most proteins of the beta-transducin family are involved in regulatory functions. This protein is possibly involved in some intracellular signaling pathway. This gene is deleted in Williams-Beuren syndrome, a developmental disorder caused by deletion of multiple genes at 7q11.23.

TBL2 Antibody (N-term) - References

Hu, M., et al. Pharmacogenet. Genomics 20(10):634-637(2010)
Fontaine-Bisson, B., et al. Diabetologia 53(10):2155-2162(2010)
Keebler, M.E., et al. Circ Cardiovasc Genet 3(4):358-364(2010)
Hegele, R.A., et al. Hum. Mol. Genet. 18(21):4189-4194(2009)
Ruano, G., et al. Clin. Chim. Acta 400 (1-2), 48-55 (2009) :