

**TRUB1 Antibody (Center)**  
**Affinity Purified Rabbit Polyclonal Antibody (Pab)**  
**Catalog # AP12789c**

**Specification**

**TRUB1 Antibody (Center) - Product Information**

Application	<b>WB, IHC-P,E</b>
Primary Accession	<a href="#">O8WWH5</a>
Other Accession	<a href="#">NP_631908.1</a>
Reactivity	<b>Human</b>
Host	<b>Rabbit</b>
Clonality	<b>Polyclonal</b>
Isotype	<b>Rabbit Ig</b>
Calculated MW	<b>37253</b>
Antigen Region	<b>152-180</b>

**TRUB1 Antibody (Center) - Additional Information**

**Gene ID** 142940

**Other Names**

Probable tRNA pseudouridine synthase 1, 5499-, TRUB1, PUS4

**Target/Specificity**

This TRUB1 antibody is generated from rabbits immunized with a KLH conjugated synthetic peptide between 152-180 amino acids from the Central region of human TRUB1.

**Dilution**

WB~~1:1000  
IHC-P~~1:10~50

**Format**

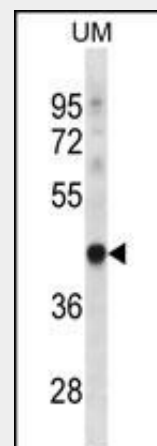
Purified polyclonal antibody supplied in PBS with 0.09% (W/V) sodium azide. This antibody is purified through a protein A column, followed by peptide affinity purification.

**Storage**

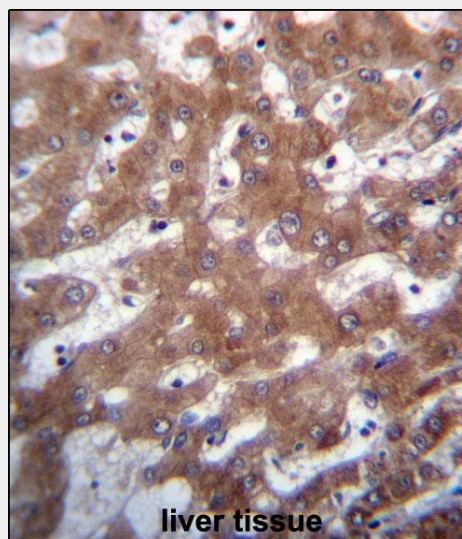
Maintain refrigerated at 2-8°C for up to 2 weeks. For long term storage store at -20°C in small aliquots to prevent freeze-thaw cycles.

**Precautions**

TRUB1 Antibody (Center) is for research use only and not for use in diagnostic or



TRUB1 Antibody (Center) (Cat. #AP12789c) western blot analysis in uterus tumor cell line lysates (35ug/lane). This demonstrates the TRUB1 antibody detected the TRUB1 protein (arrow).



TRUB1 Antibody (Center) (Cat. #AP12789c) immunohistochemistry analysis in formalin fixed and paraffin embedded human liver tissue followed by peroxidase conjugation of the secondary antibody and DAB staining. This data demonstrates the use of TRUB1 Antibody (Center) for immunohistochemistry. Clinical relevance has not been evaluated.

therapeutic procedures.

#### **TRUB1 Antibody (Center) - Protein Information**

##### **Name** TRUB1

{ECO:0000303|PubMed:12736709,  
ECO:0000312|HGNC:HGNC:16060}

##### **Function**

Pseudouridine synthase that catalyzes pseudouridylation of mRNAs (PubMed:<a href="http://www.uniprot.org/citations/28073919" target="\_blank">28073919</a>). Mediates pseudouridylation of mRNAs with the consensus sequence 5'-GUUCNANNC-3', harboring a stem-loop structure (PubMed:<a href="http://www.uniprot.org/citations/28073919" target="\_blank">28073919</a>). Constitutes the major pseudouridine synthase acting on mRNAs (PubMed:<a href="http://www.uniprot.org/citations/28073919" target="\_blank">28073919</a>).

##### **Cellular Location**

Nucleus. Cytoplasm, cytosol.  
Note=Catalyzes pseudouridylation of mRNAs in the nucleus.

##### **Tissue Location**

Highly expressed in heart, skeletal muscle and liver. Expressed at lower levels in lung, small intestine, kidney and spleen.

#### **TRUB1 Antibody (Center) - Protocols**

Provided below are standard protocols that you may find useful for product applications.

- [Western Blot](#)
- [Blocking Peptides](#)
- [Dot Blot](#)
- [Immunohistochemistry](#)
- [Immunofluorescence](#)
- [Immunoprecipitation](#)
- [Flow Cytometry](#)
- [Cell Culture](#)

#### **TRUB1 Antibody (Center) - Background**

Pseudouridine is an abundant component of rRNAs and tRNAs and is enzymatically generated by isomerization of uridine by pseudouridine synthase (Zucchini et al., 2003 [PubMed 12736709]).

#### **TRUB1 Antibody (Center) - References**

Grupe, A., et al. Am. J. Hum. Genet. 78(1):78-88(2006)  
Deloukas, P., et al. Nature 429(6990):375-381(2004)  
Zucchini, C., et al. Int. J. Mol. Med. 11(6):697-704(2003)