

OR6N2 Antibody (C-term)
Affinity Purified Rabbit Polyclonal Antibody (Pab)
Catalog # AP12693b

Specification

OR6N2 Antibody (C-term) - Product Information

Application	WB,E
Primary Accession	Q8NGY6
Other Accession	NP_001005278.1
Reactivity	Human
Host	Rabbit
Clonality	Polyclonal
Isotype	Rabbit Ig
Calculated MW	35692
Antigen Region	244-273

OR6N2 Antibody (C-term) - Additional Information

Gene ID 81442

Other Names

Olfactory receptor 6N2, Olfactory receptor OR1-23, OR6N2

Target/Specificity

This OR6N2 antibody is generated from rabbits immunized with a KLH conjugated synthetic peptide between 244-273 amino acids from the C-terminal region of human OR6N2.

Dilution

WB~~1:1000

Format

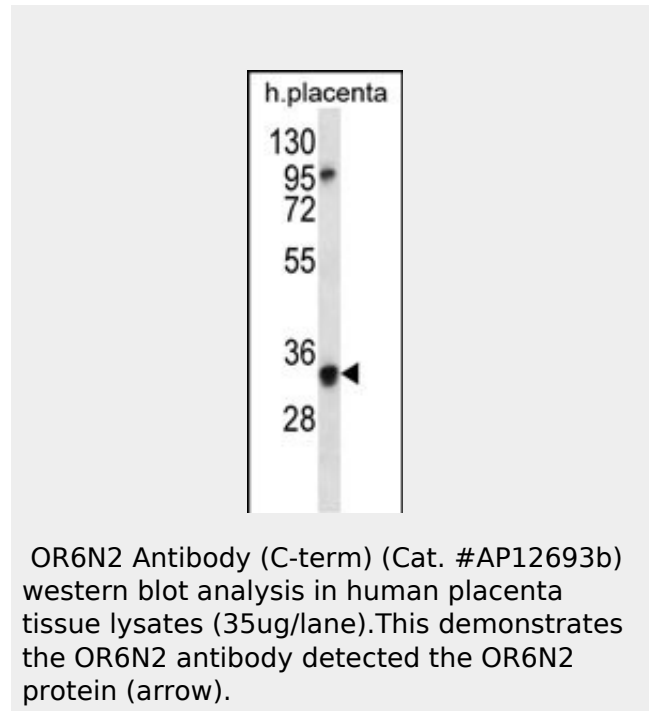
Purified polyclonal antibody supplied in PBS with 0.09% (W/V) sodium azide. This antibody is purified through a protein A column, followed by peptide affinity purification.

Storage

Maintain refrigerated at 2-8°C for up to 2 weeks. For long term storage store at -20°C in small aliquots to prevent freeze-thaw cycles.

Precautions

OR6N2 Antibody (C-term) is for research use only and not for use in diagnostic or



OR6N2 Antibody (C-term) - Background

Olfactory receptors interact with odorant molecules in the nose, to initiate a neuronal response that triggers the perception of a smell. The olfactory receptor proteins are members of a large family of G-protein-coupled receptors (GPCR) arising from single coding-exon genes. Olfactory receptors share a 7-transmembrane domain structure with many neurotransmitter and hormone receptors and are responsible for the recognition and G protein-mediated transduction of odorant signals. The olfactory receptor gene family is the largest in the genome. The nomenclature assigned to the olfactory receptor genes and proteins for this organism is independent of other organisms.

OR6N2 Antibody (C-term) - References

therapeutic procedures.

Malnic, B., et al. Proc. Natl. Acad. Sci. U.S.A.
101(8):2584-2589(2004)

OR6N2 Antibody (C-term) - Protein Information

Name OR6N2

Function

Odorant receptor.

Cellular Location

Cell membrane; Multi-pass membrane protein.

OR6N2 Antibody (C-term) - Protocols

Provided below are standard protocols that you may find useful for product applications.

- [Western Blot](#)
- [Blocking Peptides](#)
- [Dot Blot](#)
- [Immunohistochemistry](#)
- [Immunofluorescence](#)
- [Immunoprecipitation](#)
- [Flow Cytometry](#)
- [Cell Culture](#)