

**MLNR Antibody (C-term)**  
**Affinity Purified Rabbit Polyclonal Antibody (Pab)**  
**Catalog # AP12669b**

**Specification**

**MLNR Antibody (C-term) - Product Information**

Application	<b>WB, IHC-P,E</b>
Primary Accession	<a href="#">O43193</a>
Other Accession	<a href="#">NP_001498.1</a>
Reactivity	<b>Human</b>
Host	<b>Rabbit</b>
Clonality	<b>Polyclonal</b>
Isotype	<b>Rabbit Ig</b>
Calculated MW	<b>45344</b>
Antigen Region	<b>357-386</b>

**MLNR Antibody (C-term) - Additional Information**

**Gene ID** 2862

**Other Names**

Motilin receptor, G-protein coupled receptor 38, MLNR, GPR38, MTLR, MTLR1

**Target/Specificity**

This MLNR antibody is generated from rabbits immunized with a KLH conjugated synthetic peptide between 357-386 amino acids from the C-terminal region of human MLNR.

**Dilution**

WB~~1:1000  
IHC-P~~1:10~50

**Format**

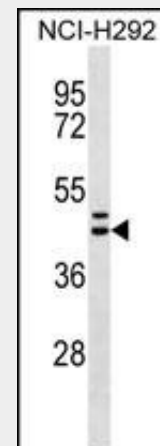
Purified polyclonal antibody supplied in PBS with 0.09% (W/V) sodium azide. This antibody is purified through a protein A column, followed by peptide affinity purification.

**Storage**

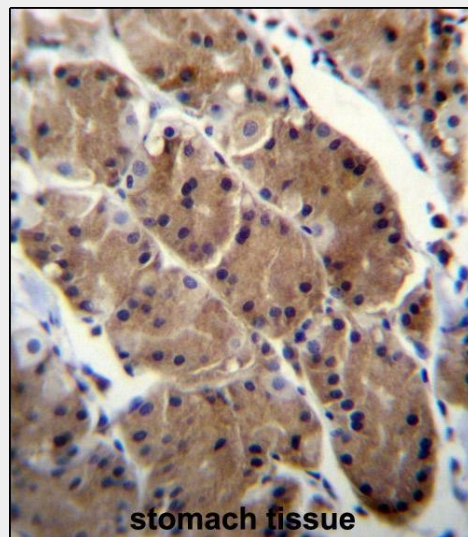
Maintain refrigerated at 2-8°C for up to 2 weeks. For long term storage store at -20°C in small aliquots to prevent freeze-thaw cycles.

**Precautions**

MLNR Antibody (C-term) is for research use only and not for use in diagnostic or



MLNR Antibody (C-term) (Cat. #AP12669b) western blot analysis in NCI-H292 cell line lysates (35ug/lane). This demonstrates the MLNR antibody detected the MLNR protein (arrow).



MLNR Antibody (C-term) (Cat. #AP12669b) immunohistochemistry analysis in formalin fixed and paraffin embedded human stomach tissue followed by peroxidase conjugation of the secondary antibody and DAB staining. This data demonstrates the use of MLNR Antibody (C-term) for immunohistochemistry. Clinical relevance has not been evaluated.

therapeutic procedures.

#### MLNR Antibody (C-term) - Protein Information

**Name** MLNR

**Synonyms** GPR38, MTLR, MTLR1

#### Function

Receptor for motilin.

#### Cellular Location

Cell membrane; Multi-pass membrane protein.

#### Tissue Location

Expressed only in thyroid, stomach, and bone marrow

#### MLNR Antibody (C-term) - Background

MLNR is a receptor for motilin.

#### MLNR Antibody (C-term) - References

Yokoyama, K., et al. Nephron Clin Pract 115 (4), C237-C243 (2010) :  
Mitselos, A., et al. Peptides 29(7):1167-1175(2008)  
Ter Beek, W.P., et al. Inflamm. Bowel Dis. 14(5):612-619(2008)  
Tokunaga, H., et al. Am. J. Physiol. Gastrointest. Liver Physiol. 294 (2), G460-G466 (2008) :  
Dowal, L., et al. J. Biol. Chem. 281(33):23999-24014(2006)

#### MLNR Antibody (C-term) - Protocols

Provided below are standard protocols that you may find useful for product applications.

- [Western Blot](#)
- [Blocking Peptides](#)
- [Dot Blot](#)
- [Immunohistochemistry](#)
- [Immunofluorescence](#)
- [Immunoprecipitation](#)
- [Flow Cytometry](#)
- [Cell Culture](#)