

UBE2NL Antibody (N-term)
Affinity Purified Rabbit Polyclonal Antibody (Pab)
Catalog # AP12596a

Specification

UBE2NL Antibody (N-term) - Product Information

Application	WB, IHC-P,E
Primary Accession	O5JXB2
Other Accession	O9EQX9 , P61089 , O4R4I1 , P61088 , O0P5K3 , NP_001013007.1
Reactivity Predicted	Human Bovine, Monkey, Mouse, Rat
Host	Rabbit
Clonality	Polyclonal
Isotype	Rabbit Ig
Calculated MW	17377
Antigen Region	6-34

UBE2NL Antibody (N-term) - Additional Information

Gene ID 389898

Other Names

Putative ubiquitin-conjugating enzyme E2 N-like, Epididymis tissue protein Li 174, UBE2NL

Target/Specificity

This UBE2NL antibody is generated from rabbits immunized with a KLH conjugated synthetic peptide between 6-34 amino acids from the N-terminal region of human UBE2NL.

Dilution

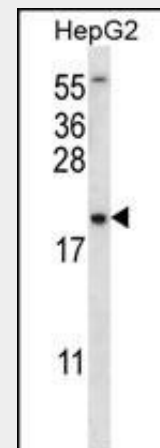
WB~~1:1000
IHC-P~~1:10~50

Format

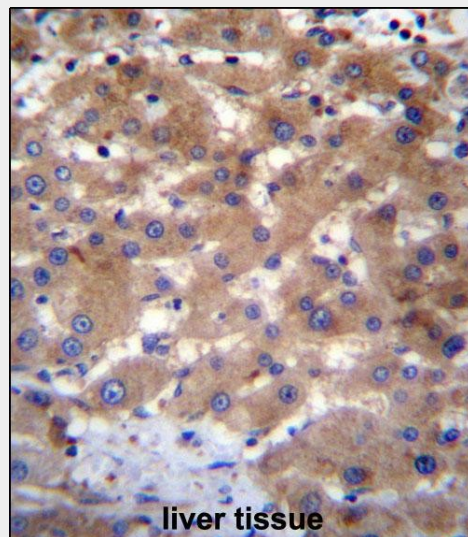
Purified polyclonal antibody supplied in PBS with 0.09% (W/V) sodium azide. This antibody is purified through a protein A column, followed by peptide affinity purification.

Storage

Maintain refrigerated at 2-8°C for up to 2



UBE2NL Antibody (N-term) (Cat. #AP12596a) western blot analysis in HepG2 cell line lysates (35ug/lane). This demonstrates the UBE2NL antibody detected the UBE2NL protein (arrow).



UBE2NL Antibody (N-term) (Cat. #AP12596a) immunohistochemistry analysis in formalin fixed and paraffin embedded human liver tissue followed by peroxidase conjugation of the secondary antibody and DAB staining. This data demonstrates the use of UBE2NL Antibody (N-term) for immunohistochemistry. Clinical relevance has not been evaluated.

weeks. For long term storage store at -20°C in small aliquots to prevent freeze-thaw cycles.

Precautions

UBE2NL Antibody (N-term) is for research use only and not for use in diagnostic or therapeutic procedures.

UBE2NL Antibody (N-term) - Protein Information

Name UBE2NL

Tissue Location

Expressed in epididymis (at protein level).

UBE2NL Antibody (N-term) - Protocols

Provided below are standard protocols that you may find useful for product applications.

- [Western Blot](#)
- [Blocking Peptides](#)
- [Dot Blot](#)
- [Immunohistochemistry](#)
- [Immunofluorescence](#)
- [Immunoprecipitation](#)
- [Flow Cytometry](#)
- [Cell Culture](#)

UBE2NL Antibody (N-term) - Background

This gene is intronless and encodes a member of the ubiquitin-conjugating enzyme family. The protein product is 91% identical to ubiquitin-conjugating enzyme E2N, a multi-exon gene product.

UBE2NL Antibody (N-term) - References

Ross, M.T., et al. Nature
434(7031):325-337(2005)