

LRRC28 Antibody (C-term)
Affinity Purified Rabbit Polyclonal Antibody (Pab)
Catalog # AP12528b

Specification

LRRC28 Antibody (C-term) - Product Information

Application	WB, IHC-P,E
Primary Accession	O86X40
Other Accession	Q32KX5 , NP_653199.2
Reactivity	Human, Mouse
Predicted	Bovine
Host	Rabbit
Clonality	Polyclonal
Isotype	Rabbit Ig
Calculated MW	41912
Antigen Region	314-342

LRRC28 Antibody (C-term) - Additional Information

Gene ID 123355

Other Names

Leucine-rich repeat-containing protein 28, LRRC28

Target/Specificity

This LRRC28 antibody is generated from rabbits immunized with a KLH conjugated synthetic peptide between 314-342 amino acids from the C-terminal region of human LRRC28.

Dilution

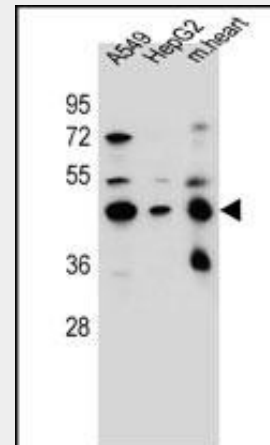
WB~~1:1000
IHC-P~~1:10~50

Format

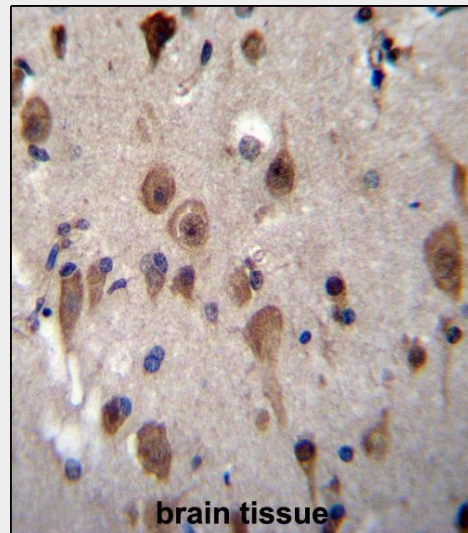
Purified polyclonal antibody supplied in PBS with 0.09% (W/V) sodium azide. This antibody is purified through a protein A column, followed by peptide affinity purification.

Storage

Maintain refrigerated at 2-8°C for up to 2 weeks. For long term storage store at -20°C in small aliquots to prevent freeze-thaw cycles.



LRRC28 Antibody (C-term) (Cat. #AP12528b) western blot analysis in A549,HepG2 cell line and mouse heart tissue lysates (35ug/lane).This demonstrates the LRRC28 antibody detected the LRRC28 protein (arrow).



LRRC28 Antibody (C-term) (Cat. #AP12528b)immunohistochemistry analysis in formalin fixed and paraffin embedded human brain tissue followed by peroxidase conjugation of the secondary antibody and DAB staining.This data demonstrates the use of LRRC28 Antibody (C-term) for immunohistochemistry. Clinical relevance has

Precautions

LRRC28 Antibody (C-term) is for research use only and not for use in diagnostic or therapeutic procedures.

LRRC28 Antibody (C-term) - Protein Information

Name LRRC28

LRRC28 Antibody (C-term) - Protocols

Provided below are standard protocols that you may find useful for product applications.

- [Western Blot](#)
- [Blocking Peptides](#)
- [Dot Blot](#)
- [Immunohistochemistry](#)
- [Immunofluorescence](#)
- [Immunoprecipitation](#)
- [Flow Cytometry](#)
- [Cell Culture](#)

not been evaluated.

LRRC28 Antibody (C-term) - Background

LRRC28 contains 11 LRR (leucine-rich) repeats. The function of the LRRC28 protein is not known.

LRRC28 Antibody (C-term) - References

Lamesch, P., et al. Genomics
89(3):307-315(2007)
Clark, H.F., et al. Genome Res.
13(10):2265-2270(2003)