

MCART6 Antibody (C-term)
Affinity Purified Rabbit Polyclonal Antibody (Pab)
Catalog # AP12524b

Specification

MCART6 Antibody (C-term) - Product Information

Application	WB,E
Primary Accession	Q5H9E4
Other Accession	NP_001012773.2
Reactivity	Human
Host	Rabbit
Clonality	Polyclonal
Isotype	Rabbit Ig
Calculated MW	34481
Antigen Region	279-307

MCART6 Antibody (C-term) - Additional Information

Gene ID 401612

Other Names

Solute carrier family 25 member 53,
Mitochondrial carrier triple repeat protein 6,
SLC25A53, MCART6

Target/Specificity

This MCART6 antibody is generated from rabbits immunized with a KLH conjugated synthetic peptide between 279-307 amino acids from the C-terminal region of human MCART6.

Dilution

WB~~1:1000

Format

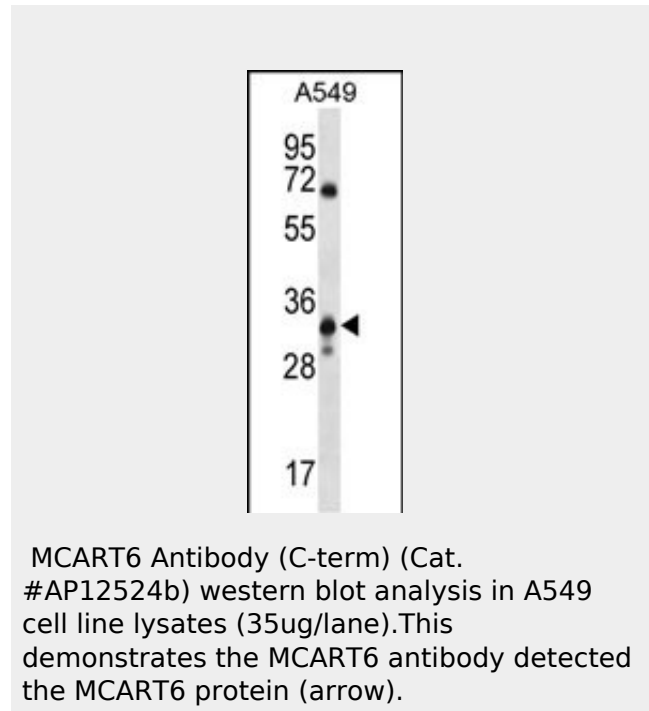
Purified polyclonal antibody supplied in PBS with 0.09% (W/V) sodium azide. This antibody is purified through a protein A column, followed by peptide affinity purification.

Storage

Maintain refrigerated at 2-8°C for up to 2 weeks. For long term storage store at -20°C in small aliquots to prevent freeze-thaw cycles.

Precautions

MCART6 Antibody (C-term) is for research



MCART6 Antibody (C-term) - Background

The function of this protein remains unknown.

MCART6 Antibody (C-term) - References

Ross, M.T., et al. Nature
434(7031):325-337(2005)

use only and not for use in diagnostic or therapeutic procedures.

MCART6 Antibody (C-term) - Protein Information

Name SLC25A53

Synonyms MCART6

Cellular Location

Mitochondrion inner membrane; Multi-pass membrane protein

MCART6 Antibody (C-term) - Protocols

Provided below are standard protocols that you may find useful for product applications.

- [Western Blot](#)
- [Blocking Peptides](#)
- [Dot Blot](#)
- [Immunohistochemistry](#)
- [Immunofluorescence](#)
- [Immunoprecipitation](#)
- [Flow Cytometry](#)
- [Cell Culture](#)