

ESPNL Antibody (C-term)
Affinity Purified Rabbit Polyclonal Antibody (Pab)
Catalog # AP12361b

Specification

ESPNL Antibody (C-term) - Product Information

Application	WB,E
Primary Accession	O6ZVH7
Other Accession	NP_919288.2
Reactivity	Human, Mouse
Host	Rabbit
Clonality	Polyclonal
Isotype	Rabbit Ig
Calculated MW	108132
Antigen Region	903-932

ESPNL Antibody (C-term) - Additional Information

Gene ID 339768

Other Names

Espin-like protein, ESPNL

Target/Specificity

This ESPNL antibody is generated from rabbits immunized with a KLH conjugated synthetic peptide between 903-932 amino acids from the C-terminal region of human ESPNL.

Dilution

WB~~1:500

Format

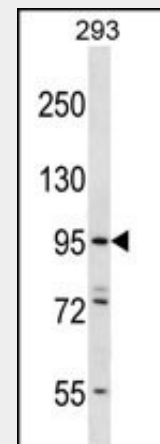
Purified polyclonal antibody supplied in PBS with 0.09% (W/V) sodium azide. This antibody is purified through a protein A column, followed by peptide affinity purification.

Storage

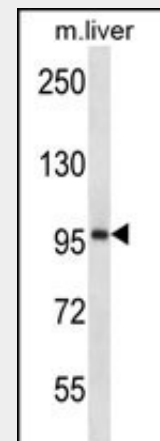
Maintain refrigerated at 2-8°C for up to 2 weeks. For long term storage store at -20°C in small aliquots to prevent freeze-thaw cycles.

Precautions

ESPNL Antibody (C-term) is for research use only and not for use in diagnostic or therapeutic procedures.



ESPNL Antibody (C-term) (Cat. #AP12361b) western blot analysis in 293 cell line lysates (35ug/lane). This demonstrates the ESPNL antibody detected the ESPNL protein (arrow).



ESPNL Antibody (C-term) (Cat. #AP12361b) western blot analysis in mouse liver tissue lysates (35ug/lane). This demonstrates the ESPNL antibody detected the ESPNL protein (arrow).

ESPNL Antibody (C-term) - Protein Information

Name ESPNL

Function

Binds to but does not cross-link actin.
Required for the formation and maintenance of inner ear hair cell stereocilia and staircase formation.
Essential for normal hearing.

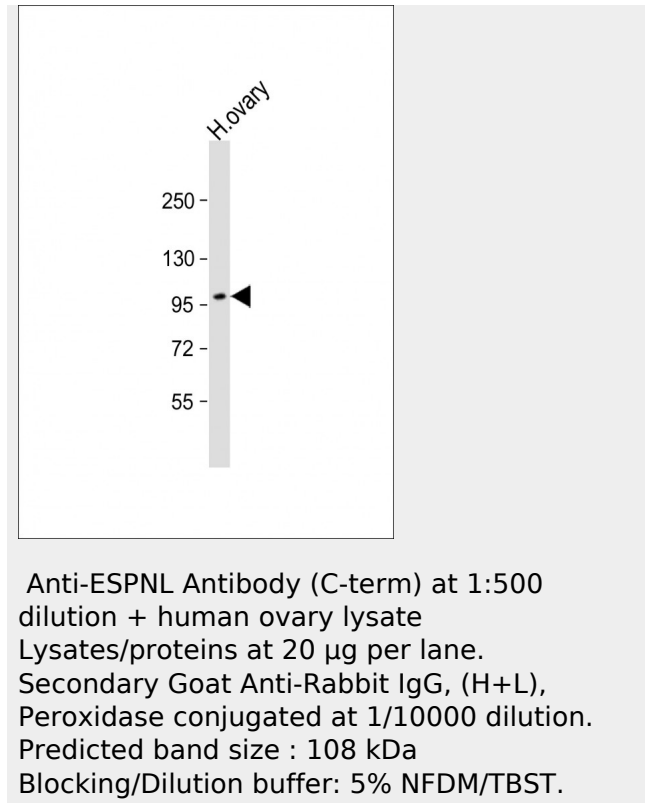
Cellular Location

Cell projection, stereocilium
{ECO:0000250|UniProtKB:Q3UYR4}

ESPNL Antibody (C-term) - Protocols

Provided below are standard protocols that you may find useful for product applications.

- [Western Blot](#)
- [Blocking Peptides](#)
- [Dot Blot](#)
- [Immunohistochemistry](#)
- [Immunofluorescence](#)
- [Immunoprecipitation](#)
- [Flow Cytometry](#)
- [Cell Culture](#)



ESPNL Antibody (C-term) - References

Clark, H.F., et al. Genome Res.
13(10):2265-2270(2003)