

**FOXD4 Antibody (Center)**  
**Affinity Purified Rabbit Polyclonal Antibody (Pab)**  
**Catalog # AP12181c**

**Specification**

**FOXD4 Antibody (Center) - Product Information**

Application	WB,E
Primary Accession	<a href="#">O12950</a>
Other Accession	<a href="#">NP_997188.2</a>
Reactivity	Human
Host	Rabbit
Clonality	Polyclonal
Isotype	Rabbit Ig
Calculated MW	47309
Antigen Region	182-210

**FOXD4 Antibody (Center) - Additional Information**

**Gene ID** 2298

**Other Names**

Forkhead box protein D4, Forkhead-related protein FKHL9, Forkhead-related transcription factor 5, FREAC-5, Myeloid factor-alpha, FOXD4, FKHL9, FOXD4A, FREAC5

**Target/Specificity**

This FOXD4 antibody is generated from rabbits immunized with a KLH conjugated synthetic peptide between 182-210 amino acids from the Central region of human FOXD4.

**Dilution**

WB~~1:1000

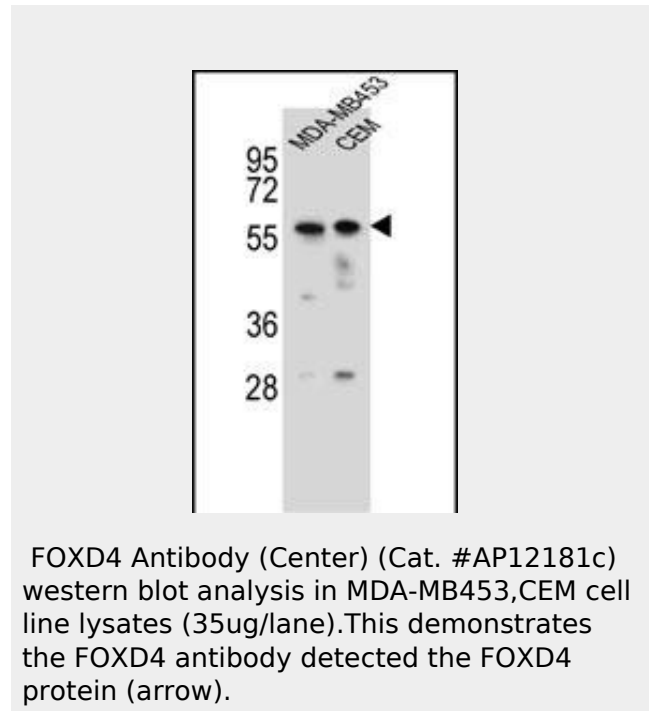
**Format**

Purified polyclonal antibody supplied in PBS with 0.09% (W/V) sodium azide. This antibody is purified through a protein A column, followed by peptide affinity purification.

**Storage**

Maintain refrigerated at 2-8°C for up to 2 weeks. For long term storage store at -20°C in small aliquots to prevent freeze-thaw cycles.

**Precautions**



**FOXD4 Antibody (Center) - References**

- Minoretta, P., et al. *Int. J. Mol. Med.* 19(3):369-372(2007)
- Wong, A., et al. *Genomics* 84(2):239-247(2004)
- Humphray, S.J., et al. *Nature* 429(6990):369-374(2004)
- Fan, Y., et al. *Genome Res.* 12(11):1663-1672(2002)
- Freyaldenhoven, B.S., et al. *Gene* 294 (1-2), 131-140 (2002) :

FOXD4 Antibody (Center) is for research use only and not for use in diagnostic or therapeutic procedures.

#### **FOXD4 Antibody (Center) - Protein Information**

**Name** FOXD4

**Synonyms** FKHL9, FOXD4A, FREAC5

#### **Cellular Location**

Nucleus.

#### **FOXD4 Antibody (Center) - Protocols**

Provided below are standard protocols that you may find useful for product applications.

- [Western Blot](#)
- [Blocking Peptides](#)
- [Dot Blot](#)
- [Immunohistochemistry](#)
- [Immunofluorescence](#)
- [Immunoprecipitation](#)
- [Flow Cytometry](#)
- [Cell Culture](#)