

PRAMEF12 Antibody (Center)
Affinity Purified Rabbit Polyclonal Antibody (Pab)
Catalog # AP12129c

Specification

PRAMEF12 Antibody (Center) - Product Information

Application	WB,E
Primary Accession	O95522
Other Accession	NP_001074299.1
Reactivity	Human
Host	Rabbit
Clonality	Polyclonal
Isotype	Rabbit Ig
Calculated MW	54633
Antigen Region	107-135

PRAMEF12 Antibody (Center) - Additional Information

Gene ID 390999

Other Names

PRAME family member 12, PRAMEF12

Target/Specificity

This PRAMEF12 antibody is generated from rabbits immunized with a KLH conjugated synthetic peptide between 107-135 amino acids from the Central region of human PRAMEF12.

Dilution

WB~~1:1000

Format

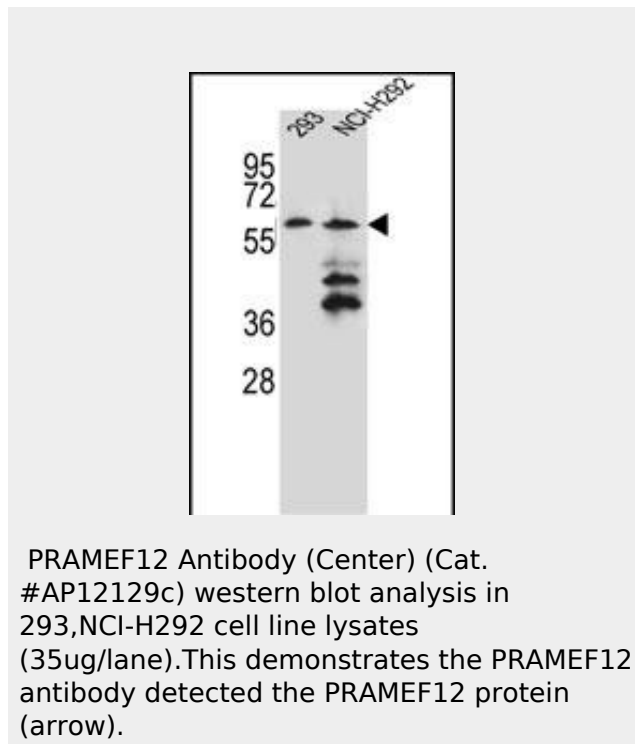
Purified polyclonal antibody supplied in PBS with 0.09% (W/V) sodium azide. This antibody is purified through a protein A column, followed by peptide affinity purification.

Storage

Maintain refrigerated at 2-8°C for up to 2 weeks. For long term storage store at -20°C in small aliquots to prevent freeze-thaw cycles.

Precautions

PRAMEF12 Antibody (Center) is for research use only and not for use in diagnostic or



PRAMEF12 Antibody (Center) - References

Gregory, S.G., et al. Nature 441(7091):315-321(2006)

therapeutic procedures.

PRAMEF12 Antibody (Center) - Protein Information

Name PRAMEF12 ([HGNC:22125](#))

PRAMEF12 Antibody (Center) - Protocols

Provided below are standard protocols that you may find useful for product applications.

- [Western Blot](#)
- [Blocking Peptides](#)
- [Dot Blot](#)
- [Immunohistochemistry](#)
- [Immunofluorescence](#)
- [Immunoprecipitation](#)
- [Flow Cytometry](#)
- [Cell Culture](#)