

TAS1R2 Antibody (C-term)
Affinity Purified Rabbit Polyclonal Antibody (Pab)
Catalog # AP11760b**Specification****TAS1R2 Antibody (C-term) - Product Information**

Application	WB,E
Primary Accession	Q8TE23
Other Accession	NP_689418.2
Reactivity	Human
Host	Rabbit
Clonality	Polyclonal
Isotype	Rabbit Ig
Calculated MW	95183
Antigen Region	691-718

TAS1R2 Antibody (C-term) - Additional Information**Gene ID** 80834**Other Names**

Taste receptor type 1 member 2, G-protein coupled receptor 71, Sweet taste receptor T1R2, TAS1R2, GPR71, T1R2, TR2

Target/Specificity

This TAS1R2 antibody is generated from rabbits immunized with a KLH conjugated synthetic peptide between 691-718 amino acids from the C-terminal region of human TAS1R2.

Dilution

WB~~1:1000

Format

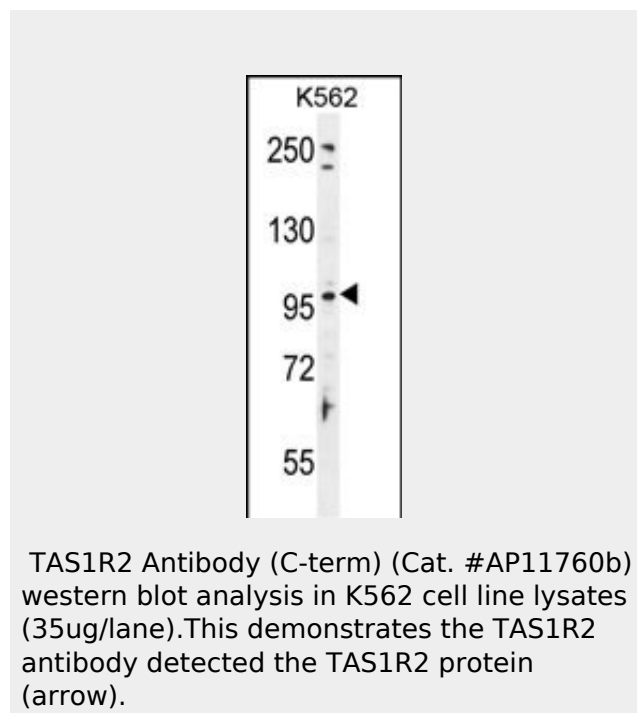
Purified polyclonal antibody supplied in PBS with 0.09% (W/V) sodium azide. This antibody is purified through a protein A column, followed by peptide affinity purification.

Storage

Maintain refrigerated at 2-8°C for up to 2 weeks. For long term storage store at -20°C in small aliquots to prevent freeze-thaw cycles.

Precautions

TAS1R2 Antibody (C-term) is for research

**TAS1R2 Antibody (C-term) - Background**

Putative taste receptor. TAS1R2/TAS1R3 recognizes diverse natural and synthetic sweeteners.

TAS1R2 Antibody (C-term) - References

- Wendell, S., et al. J. Dent. Res. 89(11):1198-1202(2010)
- Pinheiro, A.P., et al. Am. J. Med. Genet. B Neuropsychiatr. Genet. 153B (5), 1070-1080 (2010) :
- Assadi-Porter, F.M., et al. J. Mol. Biol. 398(4):584-599(2010)
- Chandrashekar, J., et al. Nature 444(7117):288-294(2006)
- Galindo-Cuspinera, V., et al. Nature 441(7091):354-357(2006)

use only and not for use in diagnostic or therapeutic procedures.

TAS1R2 Antibody (C-term) - Protein Information

Name TAS1R2

Synonyms GPR71, T1R2, TR2

Function

Putative taste receptor. TAS1R2/TAS1R3 recognizes diverse natural and synthetic sweeteners.

Cellular Location

Cell membrane; Multi-pass membrane protein.

TAS1R2 Antibody (C-term) - Protocols

Provided below are standard protocols that you may find useful for product applications.

- [Western Blot](#)
- [Blocking Peptides](#)
- [Dot Blot](#)
- [Immunohistochemistry](#)
- [Immunofluorescence](#)
- [Immunoprecipitation](#)
- [Flow Cytometry](#)
- [Cell Culture](#)