

PALM3 Antibody (C-term)
Affinity Purified Rabbit Polyclonal Antibody (Pab)
Catalog # AP11758b

Specification

PALM3 Antibody (C-term) - Product Information

Application	WB, IHC-P, FC,E
Primary Accession	A6NDB9
Other Accession	NP_001138500.1
Reactivity	Human
Host	Rabbit
Clonality	Polyclonal
Isotype	Rabbit Ig
Antigen Region	546-574

PALM3 Antibody (C-term) - Additional Information

Gene ID 342979

Other Names

Paralemmin-3, PALM3

Target/Specificity

This PALM3 antibody is generated from rabbits immunized with a KLH conjugated synthetic peptide between 546-574 amino acids from the C-terminal region of human PALM3.

Dilution

WB~~1:1000
IHC-P~~1:10~50
FC~~1:10~50

Format

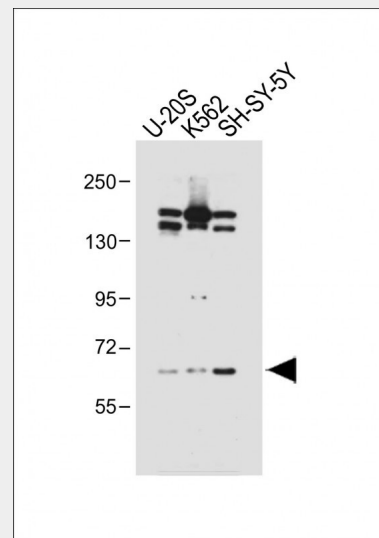
Purified polyclonal antibody supplied in PBS with 0.09% (W/V) sodium azide. This antibody is purified through a protein A column, followed by peptide affinity purification.

Storage

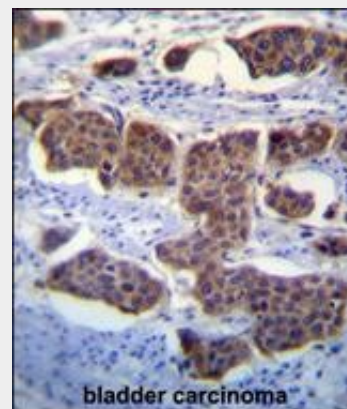
Maintain refrigerated at 2-8°C for up to 2 weeks. For long term storage store at -20°C in small aliquots to prevent freeze-thaw cycles.

Precautions

PALM3 Antibody (C-term) is for research use only and not for use in diagnostic or



All lanes : Anti-PALM3 Antibody (C-term) at 1:1000 dilution Lane 1: U-20S whole cell lysate Lane 2: K562 whole cell lysate Lane 3: SH-SY-5Y whole cell lysate Lysates/proteins at 20 µg per lane. Secondary Goat Anti-Rabbit IgG, (H+L), Peroxidase conjugated at 1/10000 dilution. Predicted band size : 72 kDa Blocking/Dilution buffer: 5% NFDN/TBST.



PALM3 Antibody (C-term) (Cat. #AP11758b) immunohistochemistry analysis in formalin fixed and paraffin embedded human bladder carcinoma followed by peroxidase conjugation of the secondary antibody and DAB staining. This data

therapeutic procedures.

PALM3 Antibody (C-term) - Protein Information

Name PALM3

Function

ATP-binding protein, which may act as a adapter in the Toll- like receptor (TLR) signaling.

Cellular Location

Cytoplasm. Cell membrane; Lipid-anchor

PALM3 Antibody (C-term) - Protocols

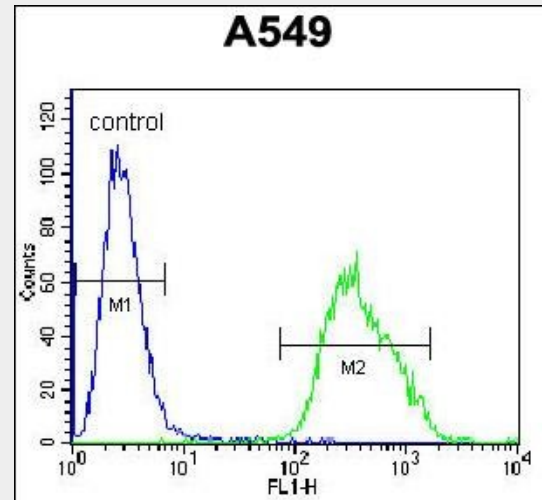
Provided below are standard protocols that you may find useful for product applications.

- [Western Blot](#)
- [Blocking Peptides](#)
- [Dot Blot](#)
- [Immunohistochemistry](#)
- [Immunofluorescence](#)
- [Immunoprecipitation](#)
- [Flow Cytometry](#)
- [Cell Culture](#)

PALM3 Antibody (C-term) - Citations

- [Extensive quantitative remodeling of the proteome between normal colon tissue and adenocarcinoma.](#)

demonstrates the use of PALM3 Antibody (C-term) for immunohistochemistry. Clinical relevance has not been evaluated.



PALM3 Antibody (C-term) (Cat. #AP11758b) flow cytometric analysis of A549 cells (right histogram) compared to a negative control cell (left histogram). FITC-conjugated goat-anti-rabbit secondary antibodies were used for the analysis.

PALM3 Antibody (C-term) - Background

PALM3 is a ATP-binding protein (By similarity).

PALM3 Antibody (C-term) - References

Grimwood, J., et al. Nature
428(6982):529-535(2004)