

**NKX1-2 Antibody (N-term)**  
**Affinity Purified Rabbit Polyclonal Antibody (Pab)**  
**Catalog # AP11745a**

**Specification**

**NKX1-2 Antibody (N-term) - Product Information**

Application	<b>WB, FC,E</b>
Primary Accession	<a href="#">Q9UD57</a>
Other Accession	<a href="#">XP_002347203.1</a> , <a href="#">XP_002343058.1</a> , <a href="#">XP_002344570.1</a>
Reactivity	<b>Human</b>
Host	<b>Rabbit</b>
Clonality	<b>Polyclonal</b>
Isotype	<b>Rabbit Ig</b>
Calculated MW	<b>32381</b>
Antigen Region	<b>1-2</b>

**NKX1-2 Antibody (N-term) - Additional Information**

**Gene ID** 390010

**Other Names**

NK1 transcription factor-related protein 2, Homeobox protein SAX-1, NKX-11, NKX1-2, C10orf121, NKX11

**Target/Specificity**

This NKX1-2 antibody is generated from rabbits immunized with a KLH conjugated synthetic peptide between 46-74 amino acids from the N-terminal region of human NKX1-2.

**Dilution**

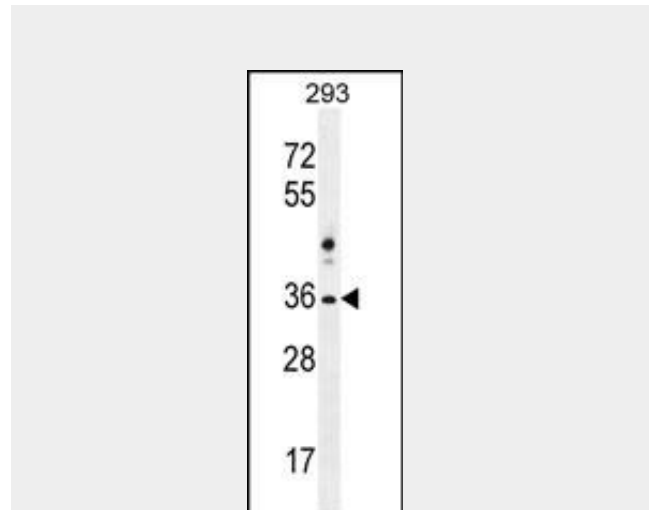
WB~~1:1000  
FC~~1:10~50

**Format**

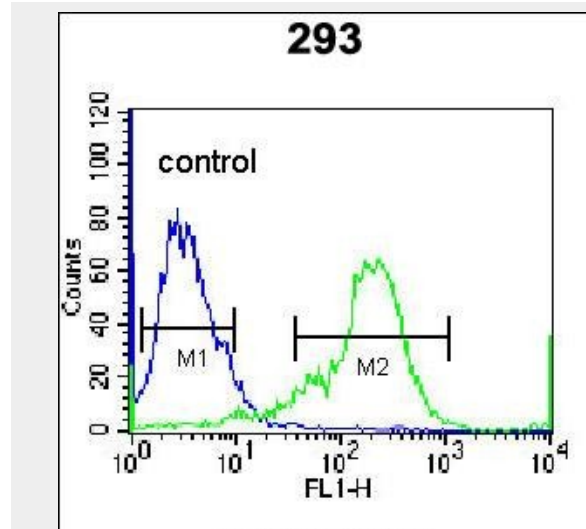
Purified polyclonal antibody supplied in PBS with 0.09% (W/V) sodium azide. This antibody is purified through a protein A column, followed by peptide affinity purification.

**Storage**

Maintain refrigerated at 2-8°C for up to 2 weeks. For long term storage store at -20°C in small aliquots to prevent freeze-thaw cycles.



NKX1-2 Antibody (N-term) (Cat. #AP11745a) western blot analysis in 293 cell line lysates (35ug/lane). This demonstrates the NKX1-2 antibody detected the NKX1-2 protein (arrow).



NKX1-2 Antibody (N-term) (Cat. #AP11745a) flow cytometric analysis of 293 cells (right histogram) compared to a negative control cell (left histogram). FITC-conjugated goat-anti-rabbit secondary antibodies were used for the analysis.

**NKX1-2 Antibody (N-term) - Background**

**Precautions**

NKX1-2 Antibody (N-term) is for research use only and not for use in diagnostic or therapeutic procedures.

NKX1-2 may function in cell specification, particularly in the CNS (By similarity).

**NKX1-2 Antibody (N-term) - Protein Information**

**Name** NKX1-2

**Synonyms** C10orf121, NKX1.1

**Function**

May function in cell specification, particularly in the CNS.

**Cellular Location**

Nucleus

{ECO:0000255|PROSITE-ProRule:PRU00108  
}.

**NKX1-2 Antibody (N-term) - Protocols**

Provided below are standard protocols that you may find useful for product applications.

- [Western Blot](#)
- [Blocking Peptides](#)
- [Dot Blot](#)
- [Immunohistochemistry](#)
- [Immunofluorescence](#)
- [Immunoprecipitation](#)
- [Flow Cytometry](#)
- [Cell Culture](#)