

TMEM120A Antibody (N-term)
Affinity Purified Rabbit Polyclonal Antibody (Pab)
Catalog # AP11729a

Specification

TMEM120A Antibody (N-term) - Product Information

Application	WB, IHC-P,E
Primary Accession	Q9BXJ8
Other Accession	NP_114131.1
Reactivity	Mouse
Host	Rabbit
Clonality	Polyclonal
Isotype	Rabbit Ig
Calculated MW	40610
Antigen Region	7-36

TMEM120A Antibody (N-term) - Additional Information

Gene ID 83862

Other Names

Transmembrane protein 120A,
Transmembrane protein induced by tumor
necrosis factor alpha, TMEM120A, TMPIT

Target/Specificity

This TMEM120A antibody is generated from rabbits immunized with a KLH conjugated synthetic peptide between 7-36 amino acids from the N-terminal region of human TMEM120A.

Dilution

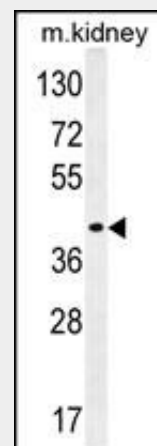
WB~~1:1000
IHC-P~~1:10~50

Format

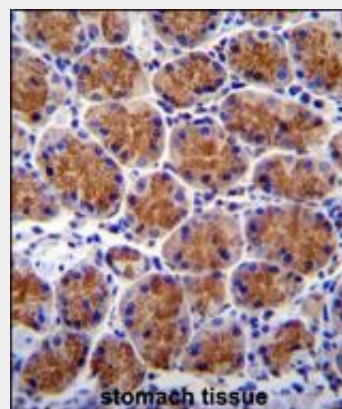
Purified polyclonal antibody supplied in PBS with 0.09% (W/V) sodium azide. This antibody is purified through a protein A column, followed by peptide affinity purification.

Storage

Maintain refrigerated at 2-8°C for up to 2 weeks. For long term storage store at -20°C in small aliquots to prevent freeze-thaw cycles.



TMEM120A Antibody (N-term) (Cat. #AP11729a) western blot analysis in mouse kidney tissue lysates (35ug/lane). This demonstrates the TMEM120A antibody detected the TMEM120A protein (arrow).



TMEM120A Antibody (N-term) (Cat. #AP11729a) immunohistochemistry analysis in formalin fixed and paraffin embedded human stomach tissue followed by peroxidase conjugation of the secondary antibody and DAB staining. This data demonstrates the use of TMEM120A Antibody (N-term) for immunohistochemistry. Clinical relevance has not been evaluated.

TMEM120A Antibody (N-term) - References

Precautions

TMEM120A Antibody (N-term) is for research use only and not for use in diagnostic or therapeutic procedures.

Strausberg, R.L., et al. Proc. Natl. Acad. Sci. U.S.A. 99(26):16899-16903(2002)

TMEM120A Antibody (N-term) - Protein Information**Name** TMEM120A

{ECO:0000303|PubMed:26024229,
ECO:0000312|HGNC:HGNC:21697}

Function

Ion channel involved in sensing mechanical pain. Contributes to mechanosensitive currents in nociceptors and detecting mechanical pain stimuli (By similarity). May also be required for efficient adipogenesis (PubMed:26024229).

Cellular Location

Cell membrane
{ECO:0000250|UniProtKB:Q8C1E7};
Multi-pass membrane protein. Nucleus inner membrane
{ECO:0000250|UniProtKB:Q8C1E7};
Multi-pass membrane protein

Tissue Location

Expressed in nociceptors.

TMEM120A Antibody (N-term) - Protocols

Provided below are standard protocols that you may find useful for product applications.

- [Western Blot](#)
- [Blocking Peptides](#)
- [Dot Blot](#)
- [Immunohistochemistry](#)
- [Immunofluorescence](#)
- [Immunoprecipitation](#)
- [Flow Cytometry](#)
- [Cell Culture](#)