

**TTC6 Antibody (C-term)**  
**Affinity Purified Rabbit Polyclonal Antibody (Pab)**  
**Catalog # AP11724b**

**Specification**

**TTC6 Antibody (C-term) - Product Information**

Application	WB,E
Primary Accession	<a href="#">Q86TZ1</a>
Reactivity	Human
Host	Rabbit
Clonality	Polyclonal
Isotype	Rabbit Ig
Calculated MW	59379
Antigen Region	410-438

**TTC6 Antibody (C-term) - Additional Information**

**Other Names**

Tetratricopeptide repeat protein 6, TPR  
repeat protein 6, TTC6

**Target/Specificity**

This TTC6 antibody is generated from rabbits immunized with a KLH conjugated synthetic peptide between 410-438 amino acids from the C-terminal region of human TTC6.

**Dilution**

WB~~1:1000

**Format**

Purified polyclonal antibody supplied in PBS with 0.09% (W/V) sodium azide. This antibody is purified through a protein A column, followed by peptide affinity purification.

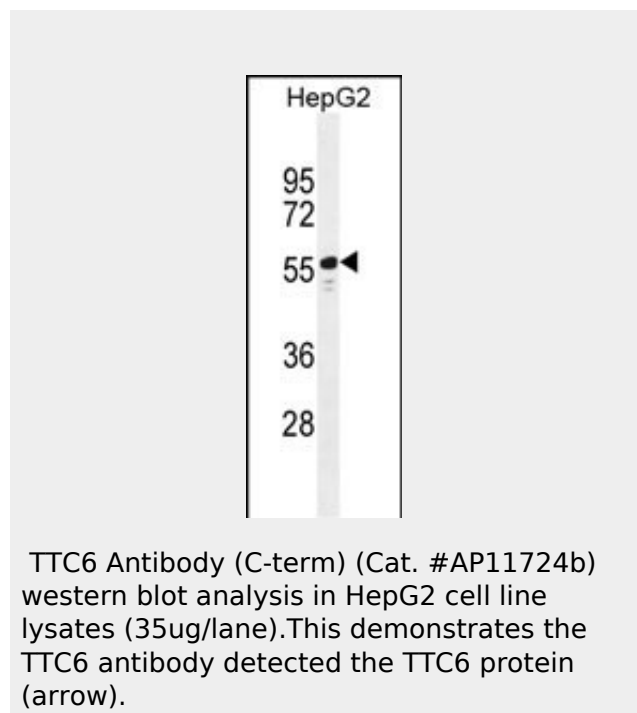
**Storage**

Maintain refrigerated at 2-8°C for up to 2 weeks. For long term storage store at -20°C in small aliquots to prevent freeze-thaw cycles.

**Precautions**

TTC6 Antibody (C-term) is for research use only and not for use in diagnostic or therapeutic procedures.

**TTC6 Antibody (C-term) - Protein Information**



TTC6 Antibody (C-term) (Cat. #AP11724b) western blot analysis in HepG2 cell line lysates (35ug/lane). This demonstrates the TTC6 antibody detected the TTC6 protein (arrow).

Name **TTC6** ([HGNC:19739](#))

### **TTC6 Antibody (C-term) - Protocols**

Provided below are standard protocols that you may find useful for product applications.

- [Western Blot](#)
- [Blocking Peptides](#)
- [Dot Blot](#)
- [Immunohistochemistry](#)
- [Immunofluorescence](#)
- [Immunoprecipitation](#)
- [Flow Cytometry](#)
- [Cell Culture](#)