

ATXN7L2 Antibody (C-term)
Affinity Purified Rabbit Polyclonal Antibody (Pab)
Catalog # AP11293b

Specification

ATXN7L2 Antibody (C-term) - Product Information

Application	WB, FC,E
Primary Accession	Q5T6C5
Other Accession	NP_699171.3
Reactivity	Human
Host	Rabbit
Clonality	Polyclonal
Isotype	Rabbit Ig
Calculated MW	77181
Antigen Region	555-584

ATXN7L2 Antibody (C-term) - Additional Information

Gene ID 127002

Other Names

Ataxin-7-like protein 2, ATXN7L2

Target/Specificity

This ATXN7L2 antibody is generated from rabbits immunized with a KLH conjugated synthetic peptide between 555-584 amino acids from the C-terminal region of human ATXN7L2.

Dilution

WB~~1:1000
FC~~1:10~50

Format

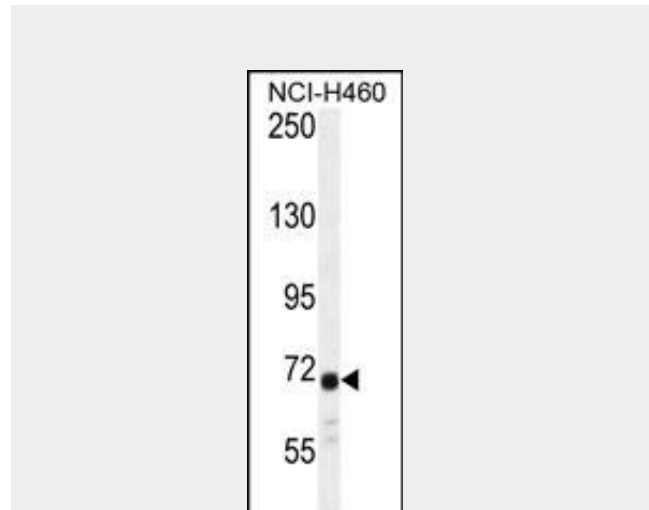
Purified polyclonal antibody supplied in PBS with 0.09% (W/V) sodium azide. This antibody is purified through a protein A column, followed by peptide affinity purification.

Storage

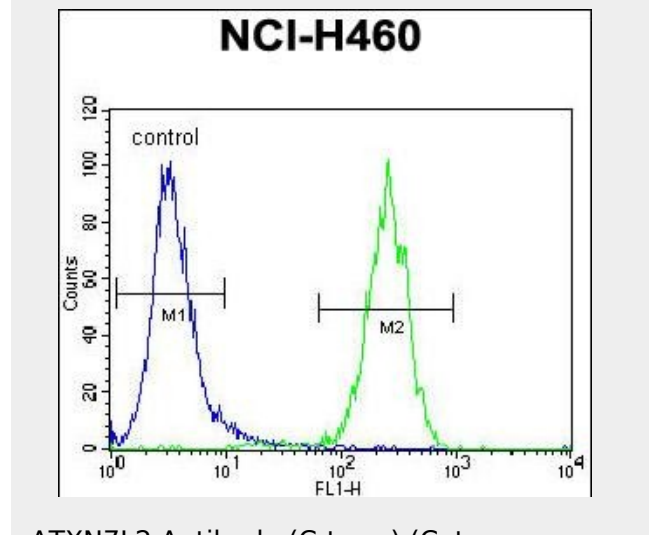
Maintain refrigerated at 2-8°C for up to 2 weeks. For long term storage store at -20°C in small aliquots to prevent freeze-thaw cycles.

Precautions

ATXN7L2 Antibody (C-term) is for research use only and not for use in diagnostic or



ATXN7L2 Antibody (C-term) (Cat. #AP11293b) western blot analysis in NCI-H460 cell line lysates (35ug/lane). This demonstrates the ATXN7L2 antibody detected the ATXN7L2 protein (arrow).



ATXN7L2 Antibody (C-term) (Cat. #AP11293b) flow cytometric analysis of NCI-H460 cells (right histogram) compared to a negative control cell (left histogram). FITC-conjugated goat-anti-rabbit secondary antibodies were used for the analysis.

ATXN7L2 Antibody (C-term) - References

therapeutic procedures.

Rose, J.E., et al. Mol. Med. 16 (7-8), 247-253 (2010) :

Kottgen, A., et al. Nat. Genet. 42(5):376-384(2010)

Shi, J., et al. Mol. Psychiatry (2010) In press :

ATXN7L2 Antibody (C-term) - Protein Information

Name ATXN7L2

ATXN7L2 Antibody (C-term) - Protocols

Provided below are standard protocols that you may find useful for product applications.

- [Western Blot](#)
- [Blocking Peptides](#)
- [Dot Blot](#)
- [Immunohistochemistry](#)
- [Immunofluorescence](#)
- [Immunoprecipitation](#)
- [Flow Cytometry](#)
- [Cell Culture](#)