

CAD Antibody (Center)
Affinity Purified Rabbit Polyclonal Antibody (Pab)
Catalog # AP11110c

Specification

CAD Antibody (Center) - Product Information

Application	WB, IHC-P, FC,E
Primary Accession	P27708
Other Accession	B2RQC6 , NP_004332.2
Reactivity	Human
Predicted	Mouse
Host	Rabbit
Clonality	Polyclonal
Isotype	Rabbit Ig
Calculated MW	242984
Antigen Region	780-809

CAD Antibody (Center) - Additional Information

Gene ID 790

Other Names

CAD protein, Glutamine-dependent carbamoyl-phosphate synthase, Aspartate carbamoyltransferase, Dihydroorotase, CAD

Target/Specificity

This CAD antibody is generated from rabbits immunized with a KLH conjugated synthetic peptide between 780-809 amino acids from the Central region of human CAD.

Dilution

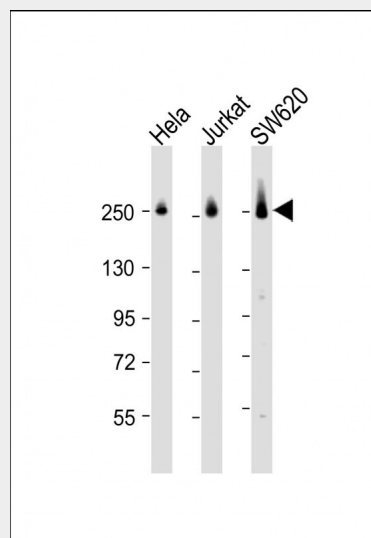
WB~~1:1000
IHC-P~~1:25
FC~~1:25

Format

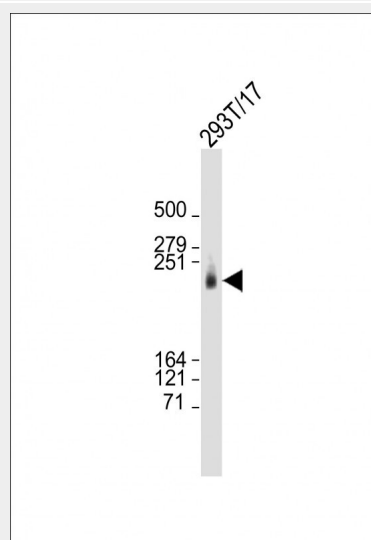
Purified polyclonal antibody supplied in PBS with 0.09% (W/V) sodium azide. This antibody is purified through a protein A column, followed by peptide affinity purification.

Storage

Maintain refrigerated at 2-8°C for up to 2 weeks. For long term storage store at -20°C in small aliquots to prevent freeze-thaw cycles.



All lanes : Anti-CAD Antibody (Center) at 1:2000 dilution
Lane 1: HeLa whole cell lysate
Lane 2: Jurkat whole cell lysate
Lane 3: SW620 whole cell lysate
Lysates/proteins at 20 µg per lane. Secondary Goat Anti-Rabbit IgG, (H+L), Peroxidase conjugated at 1/10000 dilution. Predicted band size : 243 kDa
Blocking/Dilution buffer: 5% NFDM/TBST.



Anti-CAD Antibody (Center) at 1:2000 dilution + 293T/17 whole cell lysate
Lysates/proteins at 20 µg per lane.

Precautions

CAD Antibody (Center) is for research use only and not for use in diagnostic or therapeutic procedures.

CAD Antibody (Center) - Protein Information

Name CAD ([HGNC:1424](#))

Function

This protein is a 'fusion' protein encoding four enzymatic activities of the pyrimidine pathway (GATase, CPSase, ATCase and DHOase).

Cellular Location

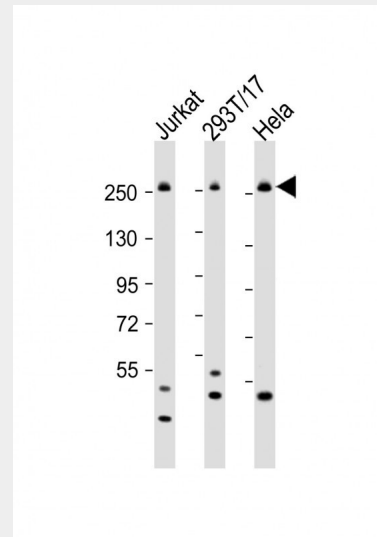
Cytoplasm. Nucleus. Note=Cytosolic and unphosphorylated in resting cells, translocates to the nucleus in response to EGF stimulation, nuclear import promotes optimal cell growth

CAD Antibody (Center) - Protocols

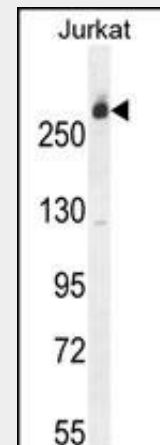
Provided below are standard protocols that you may find useful for product applications.

- [Western Blot](#)
- [Blocking Peptides](#)
- [Dot Blot](#)
- [Immunohistochemistry](#)
- [Immunofluorescence](#)
- [Immunoprecipitation](#)
- [Flow Cytometry](#)
- [Cell Culture](#)

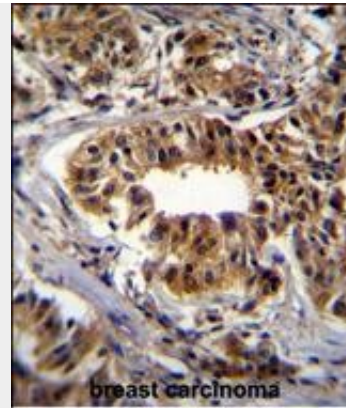
Secondary Goat Anti-Rabbit IgG, (H+L), Peroxidase conjugated at 1/10000 dilution.
Predicted band size : 243 kDa
Blocking/Dilution buffer: 5% NFDM/TBST.



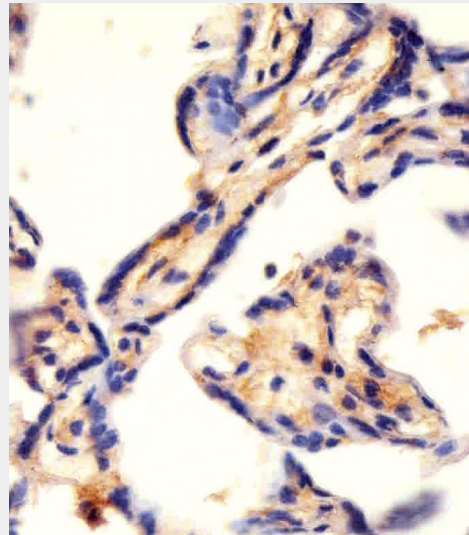
All lanes : Anti-CAD Antibody (Center) at 1:2000 dilution Lane 1: Jurkat whole cell lysate Lane 2: 293T/17 whole cell lysate Lane 3: HeLa whole cell lysate Lysates/proteins at 20 µg per lane. Secondary Goat Anti-Rabbit IgG, (H+L), Peroxidase conjugated at 1/10000 dilution. Predicted band size : 243 kDa
Blocking/Dilution buffer: 5% NFDM/TBST.



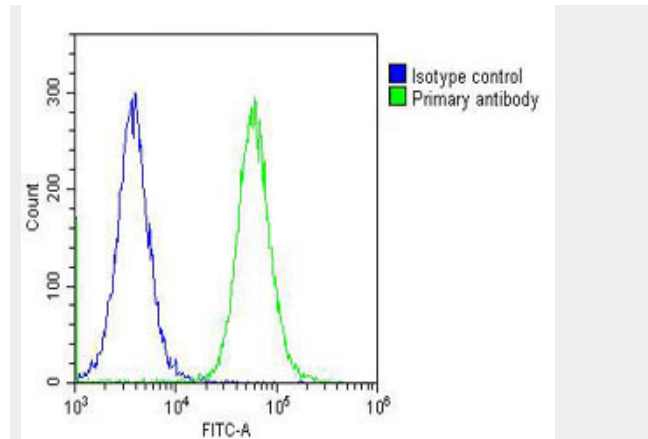
CAD Antibody (Center) (Cat. #AP11110c) western blot analysis in Jurkat cell line lysates (35ug/lane). This demonstrates the CAD antibody detected the CAD protein (arrow).



CAD Antibody (Center) (Cat. #AP11110c) immunohistochemistry analysis in formalin fixed and paraffin embedded human breast carcinoma followed by peroxidase conjugation of the secondary antibody and DAB staining. This data demonstrates the use of CAD Antibody (Center) for immunohistochemistry. Clinical relevance has not been evaluated.



AP11110c staining CAD in human placenta tissue sections by Immunohistochemistry (IHC-P - paraformaldehyde-fixed, paraffin-embedded sections). Tissue was fixed with formaldehyde and blocked with 3% BSA for 0.5 hour at room temperature; antigen retrieval was by heat mediation with a citrate buffer (pH6). Samples were incubated with primary antibody (1/25) for 1 hour at 37°C. A undiluted biotinylated goat polyvalent antibody was used as the secondary antibody.



Overlay histogram showing HeLa cells stained with AP11110c (green line). The cells were fixed with 2% paraformaldehyde (10 min) and then permeabilized with 90% methanol for 10 min. The cells were then incubated in 2% bovine serum albumin to block non-specific protein-protein interactions followed by the antibody (AP11110c, 1:25 dilution) for 60 min at 37°C. The secondary antibody used was Goat-Anti-Rabbit IgG, DyLight® 488 Conjugated Highly Cross-Adsorbed(OH191631) at 1/200 dilution for 40 min at 37°C. Isotype control antibody (blue line) was rabbit IgG (1µg/1x10⁶ cells) used under the same conditions. Acquisition of >10, 000 events was performed.

CAD Antibody (Center) - Background

The de novo synthesis of pyrimidine nucleotides is required for mammalian cells to proliferate. This gene encodes a trifunctional protein which is associated with the enzymatic activities of the first 3 enzymes in the 6-step pathway of pyrimidine biosynthesis: carbamoylphosphate synthetase (CPS II), aspartate transcarbamoylase, and dihydroorotase. This protein is regulated by the mitogen-activated protein kinase (MAPK) cascade, which indicates a direct link between activation of the MAPK cascade and de novo biosynthesis of pyrimidine nucleotides.

CAD Antibody (Center) - References

Jia, P., et al. Schizophr. Res. 122 (1-3), 38-42
(2010) :

Rose, J.E., et al. Mol. Med. 16 (7-8), 247-253
(2010) :

Ahuja, V., et al. J. Inherit. Metab. Dis.
31(4):481-491(2008)

Sugiyama, N., et al. Mol. Cell Proteomics
6(6):1103-1109(2007)

Olsen, J.V., et al. Cell 127(3):635-648(2006)