

ICAM2 Antibody (Center)
Affinity Purified Rabbit Polyclonal Antibody (Pab)
Catalog # AP11047c

Specification

ICAM2 Antibody (Center) - Product Information

Application	WB, FC,E
Primary Accession	P13598
Other Accession	NP_000864.2 , NP_001093256.1
Reactivity	Human
Host	Rabbit
Clonality	Polyclonal
Isotype	Rabbit Ig
Calculated MW	30654
Antigen Region	191-218

ICAM2 Antibody (Center) - Additional Information

Gene ID 3384

Other Names

Intercellular adhesion molecule 2, ICAM-2, CD102, ICAM2

Target/Specificity

This ICAM2 antibody is generated from rabbits immunized with a KLH conjugated synthetic peptide between 191-218 amino acids from the Central region of human ICAM2.

Dilution

WB~~1:1000
FC~~1:10~50

Format

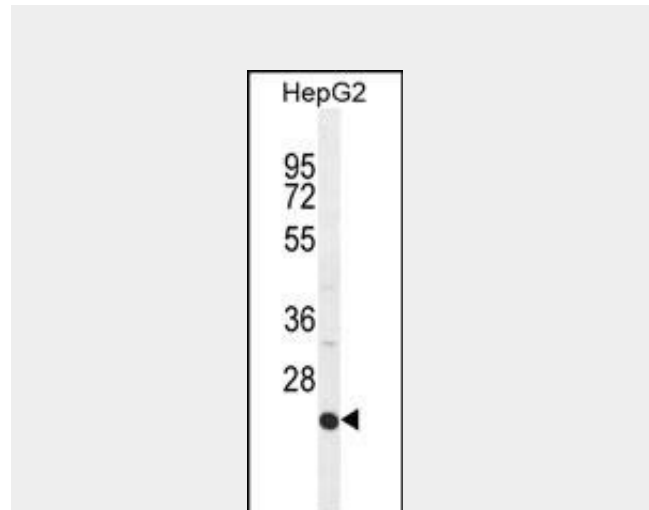
Purified polyclonal antibody supplied in PBS with 0.09% (W/V) sodium azide. This antibody is purified through a protein A column, followed by peptide affinity purification.

Storage

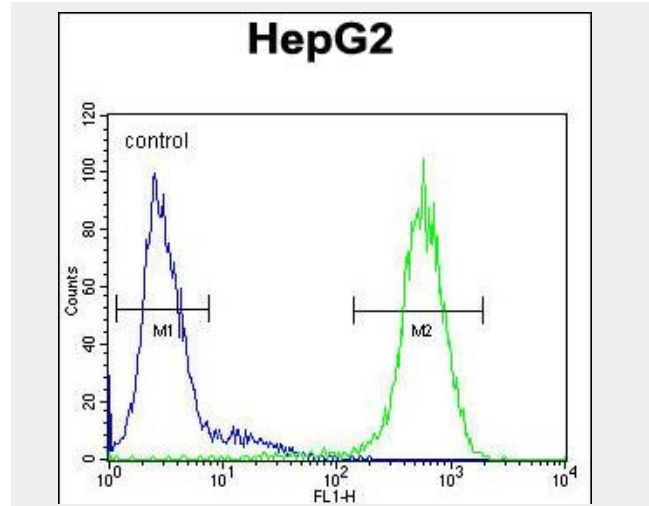
Maintain refrigerated at 2-8°C for up to 2 weeks. For long term storage store at -20°C in small aliquots to prevent freeze-thaw cycles.

Precautions

ICAM2 Antibody (Center) is for research use



ICAM2 Antibody (Center) (Cat. #AP11047c) western blot analysis in HepG2 cell line lysates (35ug/lane). This demonstrates the ICAM2 antibody detected the ICAM2 protein (arrow).



ICAM2 Antibody (Center) (Cat. #AP11047c) flow cytometric analysis of HepG2 cells (right histogram) compared to a negative control cell (left histogram). FITC-conjugated goat-anti-rabbit secondary antibodies were used for the analysis.

ICAM2 Antibody (Center) - Background

only and not for use in diagnostic or therapeutic procedures.

ICAM2 Antibody (Center) - Protein Information

Name ICAM2

Function

ICAM proteins are ligands for the leukocyte adhesion protein LFA-1 (integrin alpha-L/beta-2). ICAM2 may play a role in lymphocyte recirculation by blocking LFA-1-dependent cell adhesion. It mediates adhesive interactions important for antigen-specific immune response, NK-cell mediated clearance, lymphocyte recirculation, and other cellular interactions important for immune response and surveillance.

Cellular Location

Membrane; Single-pass type I membrane protein. Cell projection, microvillus {ECO:0000250|UniProtKB:P35330}. Note=Co-localizes with RDX, EZR and MSN in microvilli. {ECO:0000250|UniProtKB:P35330}

ICAM2 Antibody (Center) - Protocols

Provided below are standard protocols that you may find useful for product applications.

- [Western Blot](#)
- [Blocking Peptides](#)
- [Dot Blot](#)
- [Immunohistochemistry](#)
- [Immunofluorescence](#)
- [Immunoprecipitation](#)
- [Flow Cytometry](#)
- [Cell Culture](#)

The protein encoded by this gene is a member of the intercellular adhesion molecule (ICAM) family. All ICAM proteins are type I transmembrane glycoproteins, contain 2-9 immunoglobulin-like C2-type domains, and bind to the leukocyte adhesion LFA-1 protein. This protein may play a role in lymphocyte recirculation by blocking LFA-1-dependent cell adhesion. It mediates adhesive interactions important for antigen-specific immune response, NK-cell mediated clearance, lymphocyte recirculation, and other cellular interactions important for immune response and surveillance. Several transcript variants encoding the same protein have been found for this gene.

ICAM2 Antibody (Center) - References

- Han, S., et al. Hum. Immunol. 71(7):727-730(2010)
- Rajaraman, P., et al. Cancer Epidemiol. Biomarkers Prev. 19(5):1356-1361(2010)
- Davila, S., et al. Genes Immun. 11(3):232-238(2010)
- Sato, H., et al. Biochim. Biophys. Acta 1790(10):1198-1205(2009)
- Rajaraman, P., et al. Cancer Epidemiol. Biomarkers Prev. 18(5):1651-1658(2009)