

**TIGD3 Antibody (C-term)**  
**Affinity Purified Rabbit Polyclonal Antibody (Pab)**  
**Catalog # AP11042b**

**Specification**

**TIGD3 Antibody (C-term) - Product Information**

Application	<b>WB, IHC-P, FC,E</b>
Primary Accession	<a href="#">O6B0B8</a>
Other Accession	<a href="#">NP_663771.1</a>
Reactivity	<b>Human</b>
Host	<b>Rabbit</b>
Clonality	<b>Polyclonal</b>
Isotype	<b>Rabbit Ig</b>
Calculated MW	<b>52027</b>
Antigen Region	<b>378-407</b>

**TIGD3 Antibody (C-term) - Additional Information**

**Gene ID** 220359

**Other Names**

Tigger transposable element-derived protein 3, TIGD3

**Target/Specificity**

This TIGD3 antibody is generated from rabbits immunized with a KLH conjugated synthetic peptide between 378-407 amino acids from the C-terminal region of human TIGD3.

**Dilution**

WB~~1:1000  
IHC-P~~1:50~100  
FC~~1:10~50

**Format**

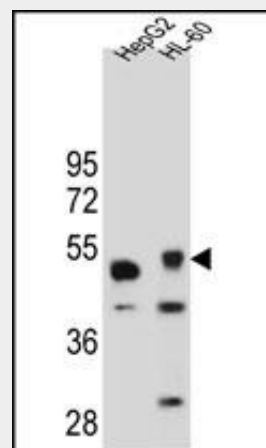
Purified polyclonal antibody supplied in PBS with 0.09% (W/V) sodium azide. This antibody is purified through a protein A column, followed by peptide affinity purification.

**Storage**

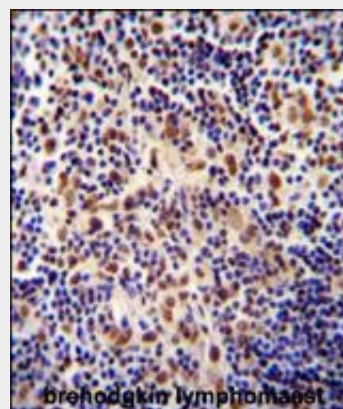
Maintain refrigerated at 2-8°C for up to 2 weeks. For long term storage store at -20°C in small aliquots to prevent freeze-thaw cycles.

**Precautions**

TIGD3 Antibody (C-term) is for research use



TIGD3 Antibody (C-term) (Cat. #AP11042b) western blot analysis in HepG2 and HL-60 cell line lysates (35ug/lane). This demonstrates the TIGD3 antibody detected the TIGD3 protein (arrow).



TIGD3 antibody (C-term) (Cat. #AP11042b) immunohistochemistry analysis in formalin fixed and paraffin embedded human Hodgkin lymphoma followed by peroxidase conjugation of the secondary antibody and DAB staining. This data demonstrates the use of the TIGD3 antibody (C-term) for immunohistochemistry. Clinical relevance has not been evaluated.

only and not for use in diagnostic or therapeutic procedures.

#### TIGD3 Antibody (C-term) - Protein Information

Name TIGD3

#### Cellular Location

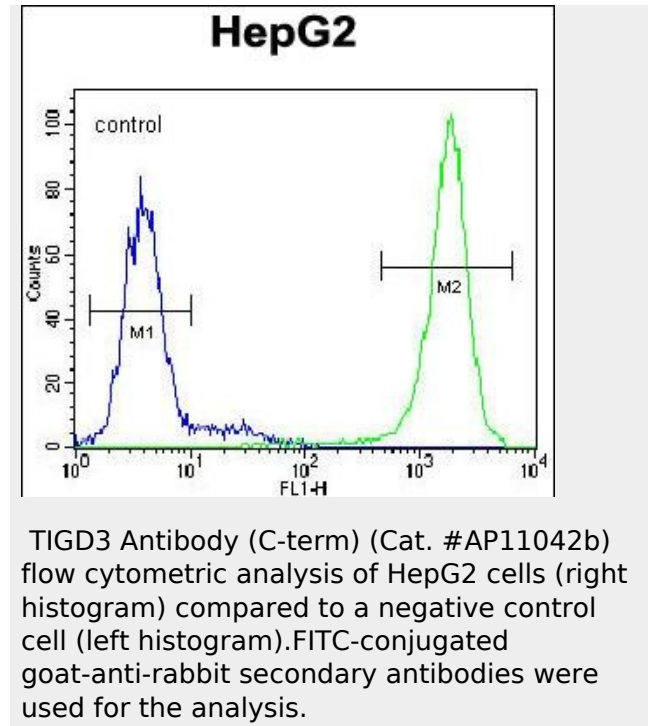
Nucleus

{ECO:0000255|PROSITE-ProRule:PRU00320,  
ECO:0000255|PROSITE-ProRule:PRU00583}

#### TIGD3 Antibody (C-term) - Protocols

Provided below are standard protocols that you may find useful for product applications.

- [Western Blot](#)
- [Blocking Peptides](#)
- [Dot Blot](#)
- [Immunohistochemistry](#)
- [Immunofluorescence](#)
- [Immunoprecipitation](#)
- [Flow Cytometry](#)
- [Cell Culture](#)



#### TIGD3 Antibody (C-term) - Background

The protein encoded by this gene belongs to the tigger subfamily of the pogo superfamily of DNA-mediated transposons in humans. These proteins are related to DNA transposons found in fungi and nematodes, and more distantly to the Tc1 and mariner transposases. They are also very similar to the major mammalian centromere protein B. The exact function of this gene is not known.

#### TIGD3 Antibody (C-term) - References

Gerhard, D.S., et al. Genome Res. 14 (10B), 2121-2127 (2004) :  
Bonaldo, M.F., et al. Genome Res. 6(9):791-806(1996)