

IMMP1L Antibody (C-term)
Affinity Purified Rabbit Polyclonal Antibody (Pab)
Catalog # AP10836B

Specification

IMMP1L Antibody (C-term) - Product Information

Application	WB,E
Primary Accession	Q96LU5
Other Accession	Q9CQU8 , NP_659418.1
Reactivity	Human, Mouse
Host	Rabbit
Clonality	Polyclonal
Isotype	Rabbit Ig
Calculated MW	18504
Antigen Region	100-127

IMMP1L Antibody (C-term) - Additional Information

Gene ID 196294

Other Names

Mitochondrial inner membrane protease subunit 1, 3421-, IMP1-like protein, IMMP1L

Target/Specificity

This IMMP1L antibody is generated from rabbits immunized with a KLH conjugated synthetic peptide between 100-127 amino acids from the C-terminal region of human IMMP1L.

Dilution

WB~~1:1000

Format

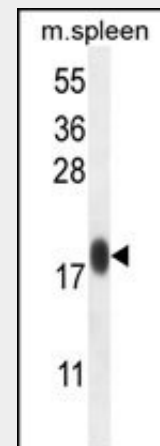
Purified polyclonal antibody supplied in PBS with 0.09% (W/V) sodium azide. This antibody is purified through a protein A column, followed by peptide affinity purification.

Storage

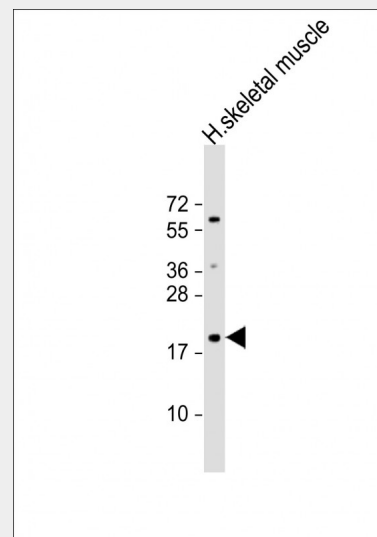
Maintain refrigerated at 2-8°C for up to 2 weeks. For long term storage store at -20°C in small aliquots to prevent freeze-thaw cycles.

Precautions

IMMP1L Antibody (C-term) is for research



IMMP1L Antibody (C-term) (Cat. #AP10836b) western blot analysis in mouse spleen tissue lysates (35ug/lane). This demonstrates the IMMP1L antibody detected the IMMP1L protein (arrow).



Anti-IMMP1L Antibody (C-term) at 1:1000 dilution + human skeletal muscle lysate Lysates/proteins at 20 µg per lane. Secondary Goat Anti-Rabbit IgG, (H+L), Peroxidase conjugated at 1/10000 dilution. Predicted band size : 19 kDa Blocking/Dilution buffer: 5% NFDm/TBST.

use only and not for use in diagnostic or therapeutic procedures.

IMMP1L Antibody (C-term) - Protein Information

Name IMMP1L

Function

Catalyzes the removal of transit peptides required for the targeting of proteins from the mitochondrial matrix, across the inner membrane, into the inter-membrane space. Known to process the nuclear encoded protein DIABLO.

Cellular Location

Mitochondrion inner membrane

IMMP1L Antibody (C-term) - Protocols

Provided below are standard protocols that you may find useful for product applications.

- [Western Blot](#)
- [Blocking Peptides](#)
- [Dot Blot](#)
- [Immunohistochemistry](#)
- [Immunofluorescence](#)
- [Immunoprecipitation](#)
- [Flow Cytometry](#)
- [Cell Culture](#)

IMMP1L Antibody (C-term) - Background

The mitochondrial inner membrane peptidase (IMP) complex generates mature, active proteins in the mitochondrial intermembrane space by proteolytically removing the mitochondrial targeting presequence of nuclear-encoded proteins. IMP1 and IMP2 (IMMP2L; MIM 605977) are the catalytic subunits of the IMP complex (Burri et al., 2005 [PubMed 15814844]).

IMMP1L Antibody (C-term) - References

Bailey, S.D., et al. Diabetes Care (2010) In press :
Talmud, P.J., et al. Am. J. Hum. Genet. 85(5):628-642(2009)
Taylor, T.D., et al. Nature 440(7083):497-500(2006)
Burri, L., et al. Mol. Biol. Cell 16(6):2926-2933(2005)