

**ANR52 Antibody (N-term)**  
**Affinity Purified Rabbit Polyclonal Antibody (Pab)**  
Catalog # AP10808a

**Specification**

**ANR52 Antibody (N-term) - Product Information**

Application	<b>WB, FC,E</b>
Primary Accession	<a href="#">Q8NB46</a>
Other Accession	<a href="#">Q8BTI7</a> , <a href="#">Q5ZLC8</a> , <a href="#">NP_775866.2</a>
Reactivity	<b>Human</b>
Predicted	<b>Chicken, Mouse</b>
Host	<b>Rabbit</b>
Clonality	<b>Polyclonal</b>
Isotype	<b>Rabbit Ig</b>
Calculated MW	<b>115077</b>
Antigen Region	<b>433-461</b>

**ANR52 Antibody (N-term) - Additional Information**

**Gene ID** 283373

**Other Names**

Serine/threonine-protein phosphatase 6 regulatory ankyrin repeat subunit C, PP6-ARS-C, Serine/threonine-protein phosphatase 6 regulatory subunit ARS-C, Ankyrin repeat domain-containing protein 52, ANKRD52

**Target/Specificity**

This ANR52 antibody is generated from rabbits immunized with a KLH conjugated synthetic peptide between 433-461 amino acids from the N-terminal region of human ANR52.

**Dilution**

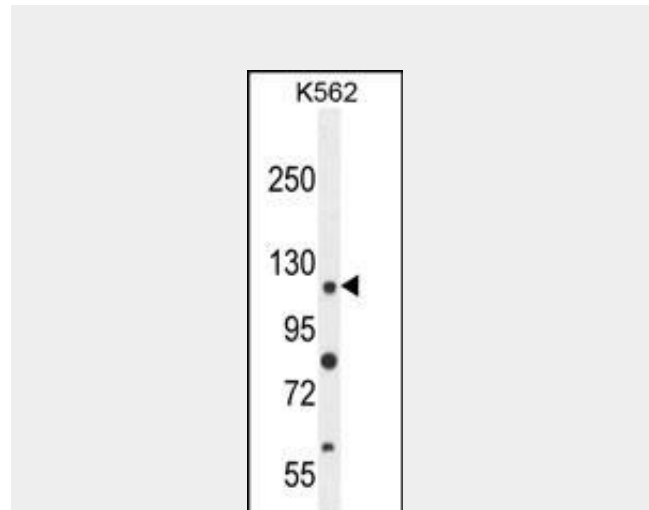
WB~~1:1000  
FC~~1:10~50

**Format**

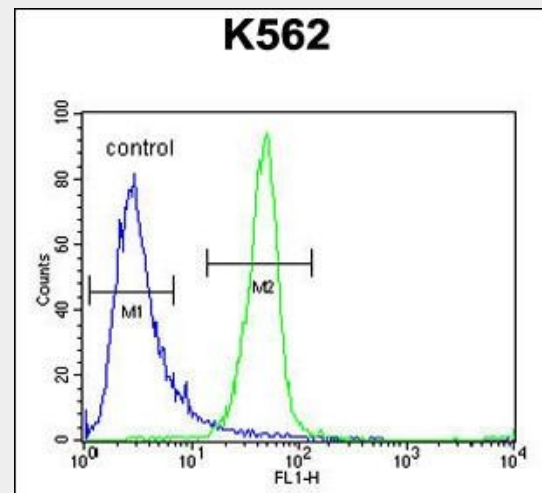
Purified polyclonal antibody supplied in PBS with 0.09% (W/V) sodium azide. This antibody is purified through a protein A column, followed by peptide affinity purification.

**Storage**

Maintain refrigerated at 2-8°C for up to 2



ANR52 Antibody (N-term) (Cat. #AP10808a) western blot analysis in K562 cell line lysates (35ug/lane). This demonstrates the ANR52 antibody detected the ANR52 protein (arrow).



ANR52 Antibody (N-term) (Cat. #AP10808a) flow cytometric analysis of K562 cells (right histogram) compared to a negative control cell (left histogram). FITC-conjugated goat-anti-rabbit secondary antibodies were used for the analysis.

**ANR52 Antibody (N-term) - Background**

Putative regulatory subunit of protein

weeks. For long term storage store at -20°C in small aliquots to prevent freeze-thaw cycles.

#### Precautions

ANR52 Antibody (N-term) is for research use only and not for use in diagnostic or therapeutic procedures.

#### ANR52 Antibody (N-term) - Protein Information

**Name** ANKRD52

#### Function

Putative regulatory subunit of protein phosphatase 6 (PP6) that may be involved in the recognition of phosphoprotein substrates.

phosphatase 6 (PP6) that may be involved in the recognition of phosphoprotein substrates.

#### ANR52 Antibody (N-term) - References

Bailey, S.D., et al. Diabetes Care (2010) In press :

Talmud, P.J., et al. Am. J. Hum. Genet. 85(5):628-642(2009)

Stefansson, B., et al. Biochemistry 47(5):1442-1451(2008)

Beausoleil, S.A., et al. Nat. Biotechnol. 24(10):1285-1292(2006)

Scherer, S.E., et al. Nature 440(7082):346-351(2006)

#### ANR52 Antibody (N-term) - Protocols

Provided below are standard protocols that you may find useful for product applications.

- [Western Blot](#)
- [Blocking Peptides](#)
- [Dot Blot](#)
- [Immunohistochemistry](#)
- [Immunofluorescence](#)
- [Immunoprecipitation](#)
- [Flow Cytometry](#)
- [Cell Culture](#)