

LRRC34 Antibody (Center)
Affinity Purified Rabbit Polyclonal Antibody (Pab)
Catalog # AP10603c

Specification

LRRC34 Antibody (Center) - Product Information

Application **WB,E**
Primary Accession [Q8IZ02](#)
Other Accession [NP_001166250.1](#),
[NP_699184.2](#)
Reactivity **Human, Mouse, Rat**
Host **Rabbit**
Clonality **Polyclonal**
Isotype **Rabbit Ig**
Calculated MW **51277**
Antigen Region **154-182**

LRRC34 Antibody (Center) - Additional Information

Gene ID 151827

Other Names

Leucine-rich repeat-containing protein 34, LRRC34

Target/Specificity

This LRRC34 antibody is generated from rabbits immunized with a KLH conjugated synthetic peptide between 154-182 amino acids from the Central region of human LRRC34.

Dilution

WB~~1:1000

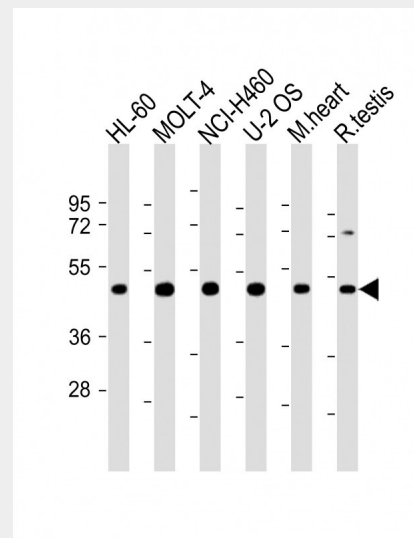
Format

Purified polyclonal antibody supplied in PBS with 0.09% (W/V) sodium azide. This antibody is purified through a protein A column, followed by peptide affinity purification.

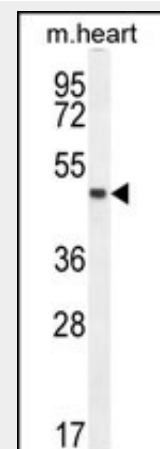
Storage

Maintain refrigerated at 2-8°C for up to 2 weeks. For long term storage store at -20°C in small aliquots to prevent freeze-thaw cycles.

Precautions



All lanes : Anti-LRRC34 Antibody (Center) at 1:2000 dilution Lane 1: HL-60 whole cell lysate Lane 2: MOLT-4 whole cell lysate Lane 3: NCI-H460 whole cell lysate Lane 4: U-2 OS whole cell lysate Lane 5: mouse heart lysate Lane 6: rat testis lysate Lysates/proteins at 20 µg per lane. Secondary Goat Anti-Rabbit IgG, (H+L), Peroxidase conjugated at 1/10000 dilution. Predicted band size : 46 kDa Blocking/Dilution buffer: 5% NFDM/TBST.



LRRC34 Antibody (Center) (Cat. #AP10603c) western blot analysis in mouse heart tissue lysates (35µg/lane).This demonstrates the LRRC34 antibody detected the LRRC34

LRRC34 Antibody (Center) is for research use only and not for use in diagnostic or therapeutic procedures.

protein (arrow).

LRRC34 Antibody (Center) - Protein Information

Name LRRC34

Function

Highly expressed in stem cells where it may be involved in regulation of pluripotency. In embryonic stem cells (ESCs), important for normal expression of the pluripotency regulators POU5F1/OCT4 and KLF4. Also important for expression of the ectodermal marker gene NES and the endodermal marker gene GATA4. Promotes stem cell proliferation in vitro.

Cellular Location

Nucleus

{ECO:0000250|UniProtKB:Q9DAM1}.

Nucleus, nucleolus

{ECO:0000250|UniProtKB:Q9DAM1}.

Cytoplasm

{ECO:0000250|UniProtKB:Q9DAM1}.

Note=As stem cells differentiate, translocates from the nucleolus to the nucleus and then to the cytoplasm.

Colocalizes with NPM1 and NCL in the nucleolus

{ECO:0000250|UniProtKB:Q9DAM1}

LRRC34 Antibody (Center) - Protocols

Provided below are standard protocols that you may find useful for product applications.

- [Western Blot](#)
- [Blocking Peptides](#)
- [Dot Blot](#)
- [Immunohistochemistry](#)
- [Immunofluorescence](#)
- [Immunoprecipitation](#)
- [Flow Cytometry](#)
- [Cell Culture](#)