

AP1S3 Antibody (N-term)
Affinity Purified Rabbit Polyclonal Antibody (Pab)
Catalog # AP10390a

Specification

AP1S3 Antibody (N-term) - Product Information

Application	WB, IHC-P,E
Primary Accession	O96PC3
Other Accession	NP_001034658.1
Reactivity	Human, Mouse
Host	Rabbit
Clonality	Polyclonal
Isotype	Rabbit Ig
Antigen Region	8-37

AP1S3 Antibody (N-term) - Additional Information

Gene ID 130340

Other Names

AP-1 complex subunit sigma-3, Adaptor protein complex AP-1 subunit sigma-1C, Adaptor-related protein complex 1 subunit sigma-1C, Clathrin assembly protein complex 1 sigma-1C small chain, Golgi adaptor HA1/AP1 adaptin sigma-1C subunit, Sigma 1C subunit of AP-1 clathrin, Sigma-adaptin 1C, Sigma1C-adaptin, AP1S3

Target/Specificity

This AP1S3 antibody is generated from rabbits immunized with a KLH conjugated synthetic peptide between 8-37 amino acids from the N-terminal region of human AP1S3.

Dilution

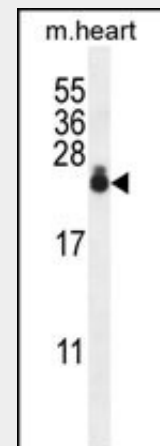
WB~~1:1000
IHC-P~~1:50~100

Format

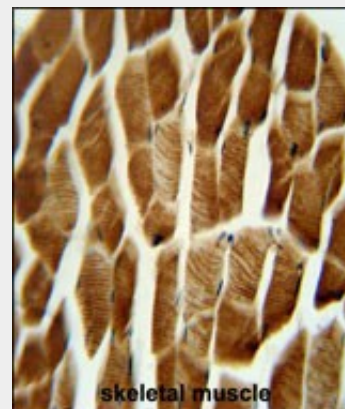
Purified polyclonal antibody supplied in PBS with 0.09% (W/V) sodium azide. This antibody is purified through a protein A column, followed by peptide affinity purification.

Storage

Maintain refrigerated at 2-8°C for up to 2 weeks. For long term storage store at -20°C in small aliquots to prevent freeze-thaw



AP1S3 Antibody (N-term) (Cat. #AP10390a) western blot analysis in mouse heart tissue lysates (35ug/lane). This demonstrates the AP1S3 antibody detected the AP1S3 protein (arrow).



AP1S3 antibody (N-term) (Cat. #AP10390a) immunohistochemistry analysis in formalin fixed and paraffin embedded human skeletal muscle followed by peroxidase conjugation of the secondary antibody and DAB staining. This data demonstrates the use of the AP1S3 antibody (N-term) for immunohistochemistry. Clinical relevance has not been evaluated.

AP1S3 Antibody (N-term) - References

Rose, J. Phd, et al. Mol. Med. (2010) In press :

cycles.

Precautions

AP1S3 Antibody (N-term) is for research use only and not for use in diagnostic or therapeutic procedures.

Roeth, J.F., et al. J. Cell Biol. 167(5):903-913(2004) Hirst, J., et al. Mol. Biol. Cell 12(11):3573-3588(2001) Boehm, M., et al. Mol. Biol. Cell 12(10):2907-2920(2001) Kirchhausen, T. Nat. Rev. Mol. Cell Biol. 1(3):187-198(2000)

AP1S3 Antibody (N-term) - Protein Information

Name AP1S3

Function

Subunit of clathrin-associated adaptor protein complex 1 that plays a role in protein sorting in the late-Golgi/trans-Golgi network (TGN) and/or endosomes. The AP complexes mediate both the recruitment of clathrin to membranes and the recognition of sorting signals within the cytosolic tails of transmembrane cargo molecules. Involved in TLR3 trafficking (PubMed:24791904).

Cellular Location

Golgi apparatus. Cytoplasmic vesicle membrane; Peripheral membrane protein; Cytoplasmic side. Membrane, clathrin-coated pit. Note=Component of the coat surrounding the cytoplasmic face of coated vesicles located at the Golgi complex

Tissue Location

Widely expressed.

AP1S3 Antibody (N-term) - Protocols

Provided below are standard protocols that you may find useful for product applications.

- [Western Blot](#)
- [Blocking Peptides](#)
- [Dot Blot](#)
- [Immunohistochemistry](#)
- [Immunofluorescence](#)
- [Immunoprecipitation](#)
- [Flow Cytometry](#)
- [Cell Culture](#)