

PEMT Antibody (C-term)
Purified Rabbit Polyclonal Antibody (Pab)
Catalog # AP1025B

Specification

PEMT Antibody (C-term) - Product Information

Application	WB, IHC-P,E
Primary Accession	O9UBM1
Reactivity	Human, Mouse
Host	Rabbit
Clonality	Polyclonal
Isotype	Rabbit Ig
Antigen Region	170-199

PEMT Antibody (C-term) - Additional Information

Gene ID 10400

Other Names

Phosphatidylethanolamine
N-methyltransferase, PEAMT, PEMT, PEMT2,
PEMT, PEMPT, PNMT

Target/Specificity

This PEMT antibody is generated from rabbits immunized with a KLH conjugated synthetic peptide between 170-199 amino acids from the C-terminal region of human PEMT.

Dilution

WB~~1:1000
IHC-P~~1:100

Format

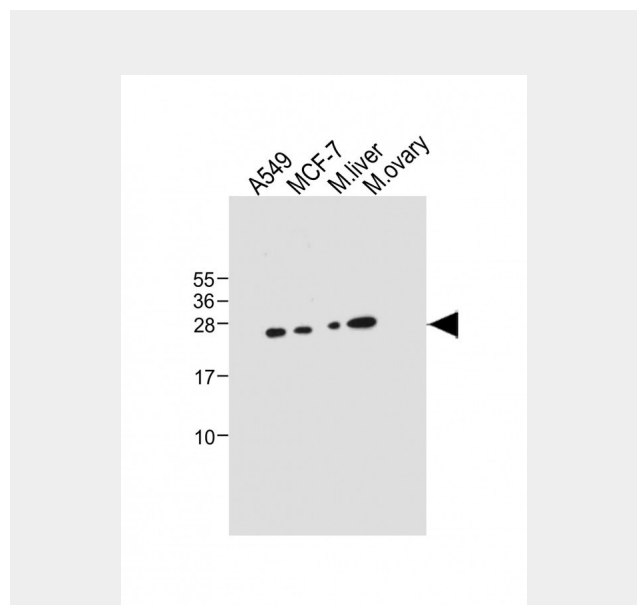
Purified polyclonal antibody supplied in PBS with 0.09% (W/V) sodium azide. This antibody is purified through a protein A column, followed by peptide affinity purification.

Storage

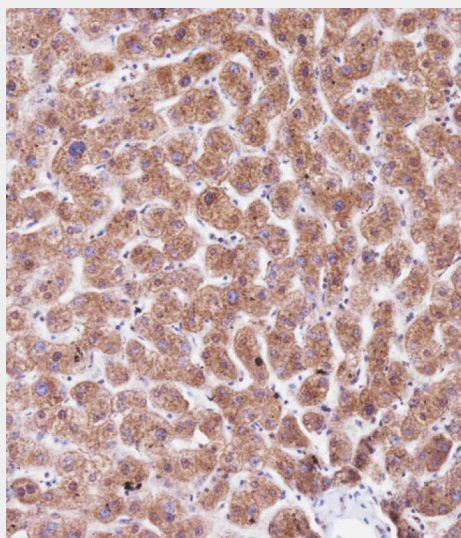
Maintain refrigerated at 2-8°C for up to 2 weeks. For long term storage store at -20°C in small aliquots to prevent freeze-thaw cycles.

Precautions

PEMT Antibody (C-term) is for research use only and not for use in diagnostic or therapeutic procedures.



All lanes : Anti-PEMT Antibody (C-term) at 1:1000 dilution Lane 1: A549 whole cell lysate Lane 2: MCF-7 whole cell lysate Lane 3: Mouse liver tissue lysate Lane 4: Mouse ovary tissue lysate Lysates/proteins at 20 µg per lane. Secondary Goat Anti-Rabbit IgG, (H+L), Peroxidase conjugated at 1/10000 dilution. Predicted band size : 22 kDa Blocking/Dilution buffer: 5% NFDM/TBST.



Immunohistochemical analysis of AP1025B on paraffin-embedded Human liver tissue.

PEMT Antibody (C-term) - Protein Information

Name PEMT

{ECO:0000255|HAMAP-Rule:MF_03216}

Synonyms PEMPT, PNMT

Function

Catalyzes the three sequential steps of the methylation pathway of phosphatidylcholine biosynthesis, the SAM-dependent methylation of phosphatidylethanolamine (PE) to phosphatidylmonomethylethanolamine (PMME), PMME to phosphatidyl dimethylethanolamine (PDME), and PDME to phosphatidylcholine (PC).

Cellular Location

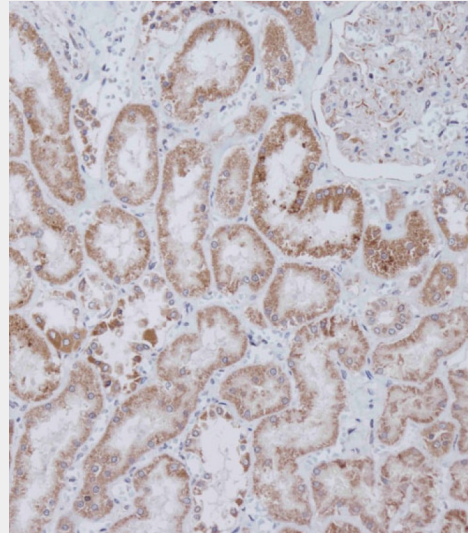
[Isoform 1]: Endoplasmic reticulum membrane; Multi-pass membrane protein. Mitochondrion membrane; Multi-pass membrane protein. Note=Found in endoplasmic reticulum where most PEMT activity is generated and in mitochondria

PEMT Antibody (C-term) - Protocols

Provided below are standard protocols that you may find useful for product applications.

- [Western Blot](#)
- [Blocking Peptides](#)
- [Dot Blot](#)
- [Immunohistochemistry](#)
- [Immunofluorescence](#)
- [Immunoprecipitation](#)
- [Flow Cytometry](#)
- [Cell Culture](#)

Tissue was fixed with formaldehyde at room temperature. Heat induced epitope retrieval was performed by EDTA buffer (pH9.0). Samples were incubated with primary antibody(1:100) for 1 hour at room temperature. Undiluted CRF Anti-Polyvalent HRP Polymer antibody was used as the secondary antibody.



Immunohistochemical analysis of AP1025B on paraffin-embedded Human kidney tissue. Tissue was fixed with formaldehyde at room temperature. Heat induced epitope retrieval was performed by EDTA buffer (pH9.0). Samples were incubated with primary antibody(1:100) for 1 hour at room temperature. Undiluted CRF Anti-Polyvalent HRP Polymer antibody was used as the secondary antibody.

PEMT Antibody (C-term) - Background

PEMT is an enzyme which converts phosphatidylethanolamine to phosphatidylcholine by sequential methylation in the liver. The protein localizes to the endoplasmic reticulum and mitochondria-associated membranes. The gene is within the Smith-Magenis syndrome region on chromosome 17.

PEMT Antibody (C-term) - References

Walkey C.J., Biochim. Biophys. Acta 1436:405-412(1999).
Shields D.J., Biochim. Biophys. Acta 1532:105-114(2001).
Hu R.-M., Proc. Natl. Acad. Sci. U.S.A.

97:9543-9548(2000).