

**CASZ1 Antibody (C-term)**  
**Affinity Purified Rabbit Polyclonal Antibody (Pab)**  
**Catalog # AP10238b**

**Specification**

**CASZ1 Antibody (C-term) - Product Information**

Application	<b>WB,E</b>
Primary Accession	<a href="#">Q86V15</a>
Other Accession	<a href="#">Q9CWL2</a> , <a href="#">NP_001073312.1</a> , <a href="#">NP_060236.3</a>
Reactivity	<b>Human, Mouse</b>
Host	<b>Rabbit</b>
Clonality	<b>Polyclonal</b>
Isotype	<b>Rabbit Ig</b>
Calculated MW	<b>190069</b>
Antigen Region	<b>1574-1601</b>

**CASZ1 Antibody (C-term) - Additional Information**

**Gene ID** 54897

**Other Names**

Zinc finger protein castor homolog 1,  
Castor-related protein, Putative  
survival-related protein, Zinc finger protein  
693, CASZ1, CST, SRG, ZNF693

**Target/Specificity**

This CASZ1 antibody is generated from rabbits immunized with a KLH conjugated synthetic peptide between 1574-1601 amino acids from the C-terminal region of human CASZ1.

**Dilution**

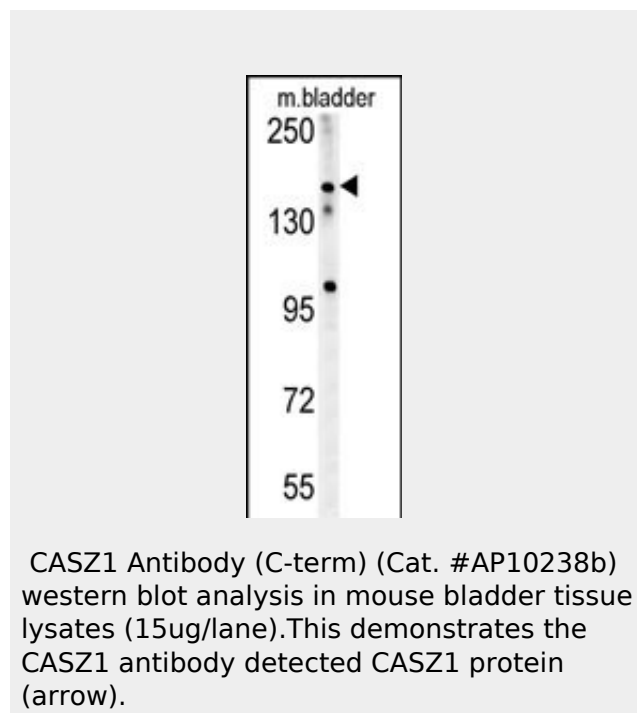
WB ~ ~ 1:1000

**Format**

Purified polyclonal antibody supplied in PBS with 0.09% (W/V) sodium azide. This antibody is purified through a protein A column, followed by peptide affinity purification.

**Storage**

Maintain refrigerated at 2-8°C for up to 2 weeks. For long term storage store at -20°C in small aliquots to prevent freeze-thaw cycles.



**CASZ1 Antibody (C-term) - References**

- Takeuchi, F., et al. Circulation  
121(21):2302-2309(2010)  
Levy, D., et al. Nat. Genet. (2009) In press :  
Fernandez, F., et al. BMC Med. Genet. 8, 57  
(2007) :  
Liu, Z., et al. Biochem. Biophys. Res. Commun.  
344(3):834-844(2006)  
Yuan, Z.R., et al. Cancer Res.  
65(23):10716-10724(2005)

**Precautions**

CASZ1 Antibody (C-term) is for research use only and not for use in diagnostic or therapeutic procedures.

**CASZ1 Antibody (C-term) - Protein Information**

**Name** CASZ1

**Synonyms** CST, SRG, ZNF693

**Function**

Transcriptional activator (PubMed:<a href="http://www.uniprot.org/citations/23639441" target="\_blank">23639441</a>, PubMed:<a href="http://www.uniprot.org/citations/27693370" target="\_blank">27693370</a>). Involved in vascular assembly and morphogenesis through direct transcriptional regulation of EGFL7 (PubMed:<a href="http://www.uniprot.org/citations/23639441" target="\_blank">23639441</a>).

**Cellular Location**

Nucleus.

**Tissue Location**

Expressed in heart, lung, skeletal muscle, pancreas, testis, small intestine, and stomach, but it is not detectable in the adult brain.

**CASZ1 Antibody (C-term) - Protocols**

Provided below are standard protocols that you may find useful for product applications.

- [Western Blot](#)
- [Blocking Peptides](#)
- [Dot Blot](#)
- [Immunohistochemistry](#)
- [Immunofluorescence](#)
- [Immunoprecipitation](#)
- [Flow Cytometry](#)
- [Cell Culture](#)